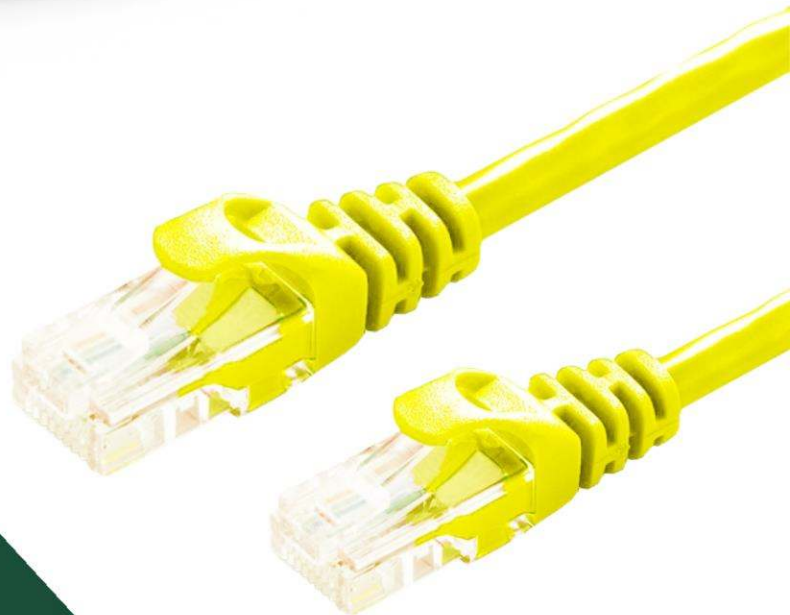


DATA PATCH CORD  
23AWG SERIES



# DATA PATCH CORD SERIES

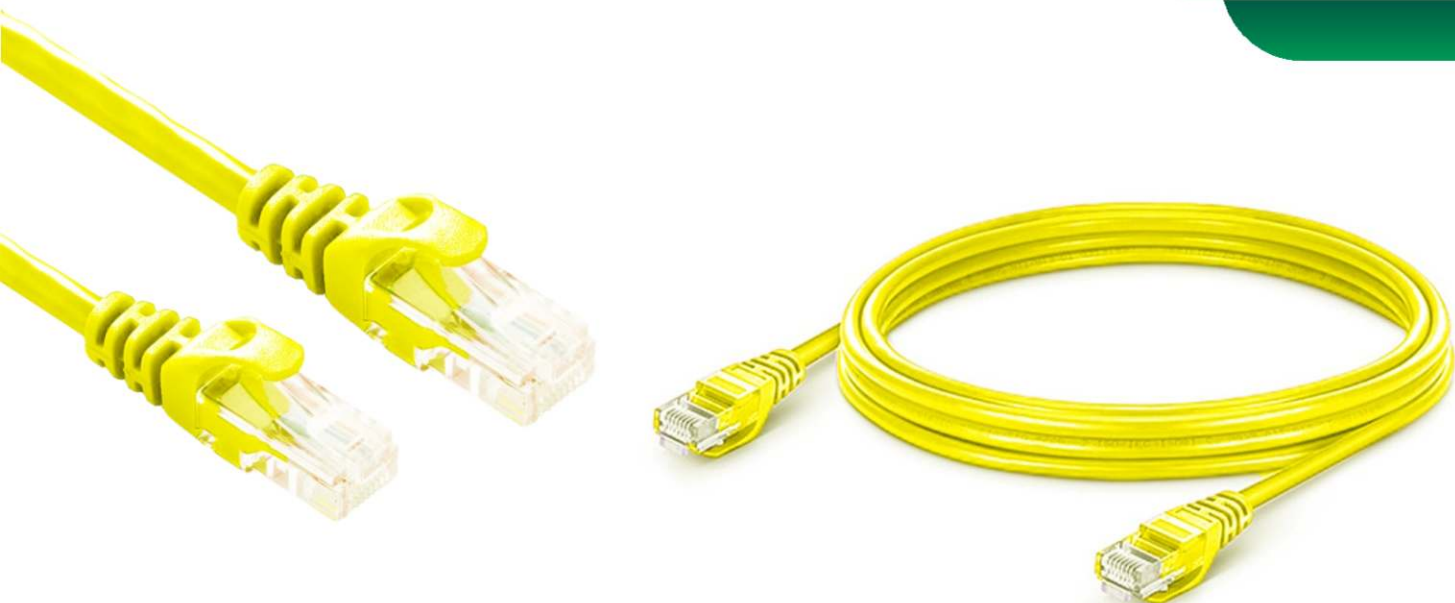


🌐 [www.tmtglobal.co.uk](http://www.tmtglobal.co.uk)    ✉ [info@tmtglobal.co.uk](mailto:info@tmtglobal.co.uk)

📍 Head Office 120 Baker Street, 3rd Floor, London, England, W1U 6tU,  
United Kingdom



# DATA PATCH CORD 23AWG SERIES



## CAT6 UTP PATCH CORD SERIES

### GENERAL SPECIFICATION

Description	0.06CM -100 METER CAT6 UTP PATCH CORD YELLOW COLOR
Conductor Resistance	$\leq 5\Omega - \leq 20\Omega$
Insulation Resistance	$\geq 10M\Omega$
Characteristic Impedance	100 — 6 Ohm @ 1-250MHz -1-500 MHz
Contact Resistance	20 m Ohm max.
Resistance unbalance	2% max
Dielectric strength	1000 volts/1 minute min rms
Cable to Plug Tensile Strength	9 Kgf (90N) min
Durability	1200
Temperature Operating Range	-25°C to +70°C
Model No	6X3PMY00-100

