



Products Catalog



shop.amssuae.com

www.tmtuae.com



About Us

We are committed to make our customers satisfied through our skilled and dedicated team, high quality products and top of the line manufacturing process. The trust and loyalty of our customers is valuable to us, sustainability is a must and it is attainable if the customers are satisfied.

Customers satisfaction is very essential to the growth of a company it is highly beneficial to both the business and the costumers, TMT Global Technology LTD aims to provide the best quality products which leads to satisfaction and reliability to customers.

All TMTGlobal products meet or exceed rigorous industry and regulatory standards for quality, reliability, and efficiency. From design and fabrication to finished product assembly, each phase in the manufacturing process is rigorously monitored and measured to ensure the highest quality, durability and operating excellence. TMTGlobal products are routinely tested and certified by various government and third-party testing labs to ensure quality standards.

TMTGlobal was established in 2005 locally and globally. Aside from our main office in the Great Britain, The Company have also entered the Middle East, and Asia market to provide quality services, up to date and innovative products manufactured and exported from different countries such as United Kingdom, Korea, Taiwan, Italy, China, TURKEY and UAE .

Our Mission



SOLUTIONS

We can develop a tailored solution to your specific needs and budget. Let us assist you to achieve peace of mind through a solution that suits you.



QUALITY

We are committed to provide products that can meet or exceed our customers' quality expectations through continuous improvements and compliance to standards



INNOVATION

We utilize the latest security solutions with cutting edge technology to safeguard and protect your home and business.



Our Top Priorities

- ▶ Customer SATISFACTION
- ▶ HIGH QUALITY products and services
- ▶ IMPROVEMENT and INNOVATION at its best
- ▶ Accelerate REVENUE GROWTH
- ▶ CONTINUING EDUCATION and TRAINING for the whole team.

As we aim in achieving our priorities, our team of experts has formulated easy but concrete keywords to remind us about our strategic approach towards success:

PROVIDE, CREATE, EXECUTE AND MONITOR, VENTURE.

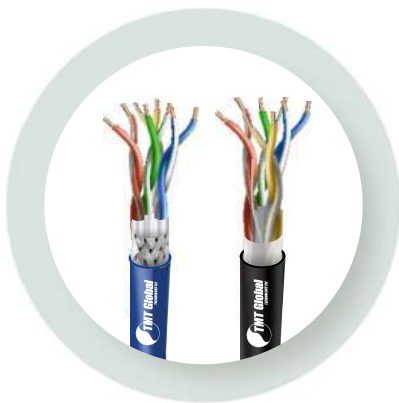
- ▶ **PROVIDE** an outstanding level of customer service.
- ▶ **CREATE** excellent new products or services which appeal to customers, or
- ▶ **EXECUTE AND MONITOR** all duties and responsibilities to enhance and develop team skills.
- ▶ Entering new markets and **VENTURING** to a wide range of targets.

A constant theme within the various iterations of the company for over a decade has been continuous improvement and innovation always looking for a better way. In-house testing, product prototyping and product development, in conjunction with customers and key academic institutions, has helped the company to remain focused on innovative solutions and leading edge initiatives to improve competitiveness and provide customer solutions.

Strategic alignment with key supply chain providers has resulted in consistent, reliable competitive sourcing of materials. Suppliers are actively encouraged to contribute to product improvement and suggest creative approaches to improving product performance.

Our Comprehensive Range of Products Includes

- ▶ Structured Cabling System a full range of copper and fiber optics solution.
- ▶ Access Control System a full range of access control and biometric access control system.
- ▶ Motion Sensor - A full range of automatic lighting and motion sensor.
- ▶ Gate Automation - Automatic door wireless RF remote control system.
- ▶ ELV/Security/Alarm Cables - Have a wide range of ELV/Security/Alarm cables.
- ▶ CCTV System A full range of analogue, IP series with full range of accessories.



Structured Cabling System



Access Control System



Motion Sensor



Gate Automation



ELV/Security/Alarm Cables



CCTV System



Fahad Group of Industry a manufacturing Facility of TMT Global Technology located at hamriya free zone sharjah (United Arab Emirates)

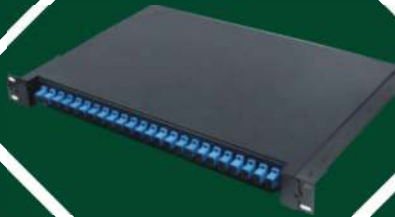


Contents

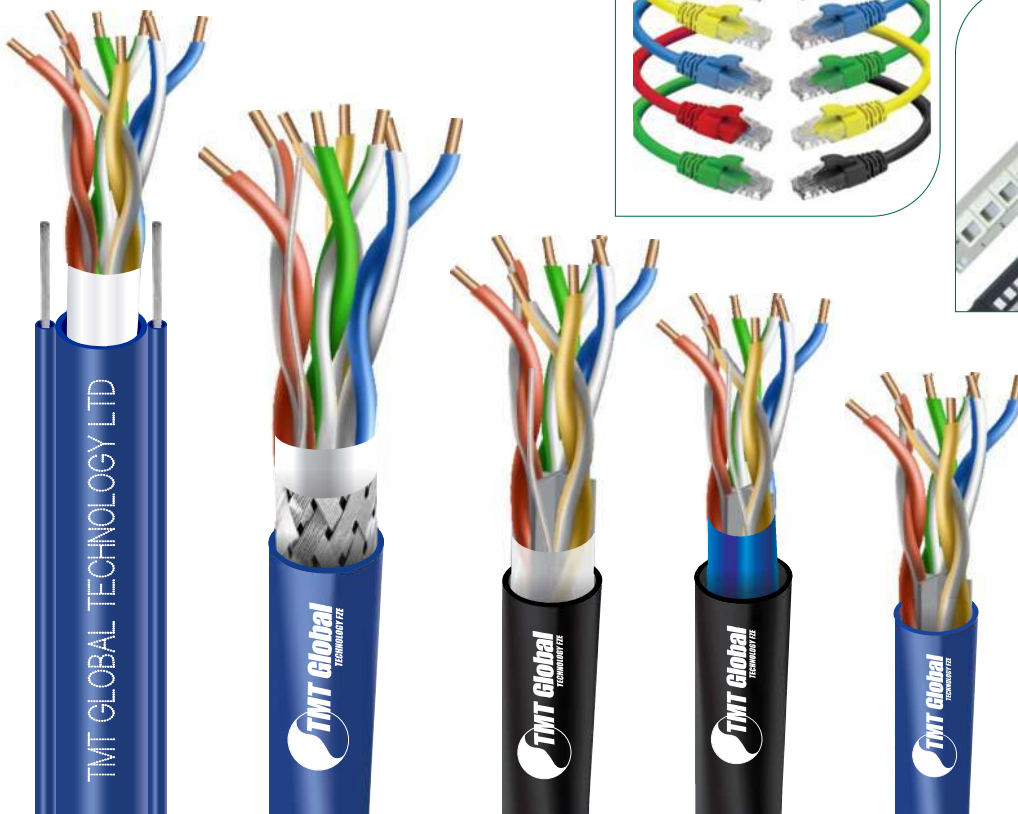
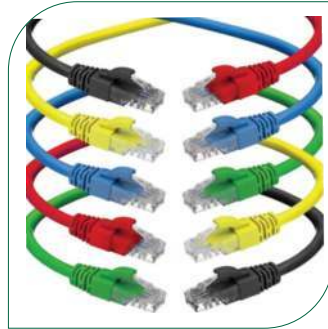
	Page No
Structured Cabling System	7-56
Access Control System	57-65
Motion Sensors	66-67
Gate Automation	68-69
ELV/Security/Alarm Cables	70-71
CCTV System	72-73
Some of Our Projects	74-77
Client & Consultant References	78-81
Certificates	82



STRUCTURED CABLING SERIES



STRUCTURED CABLING COPPER SERIES



CAT5E LAN CABLE SERIES

100/M REEL



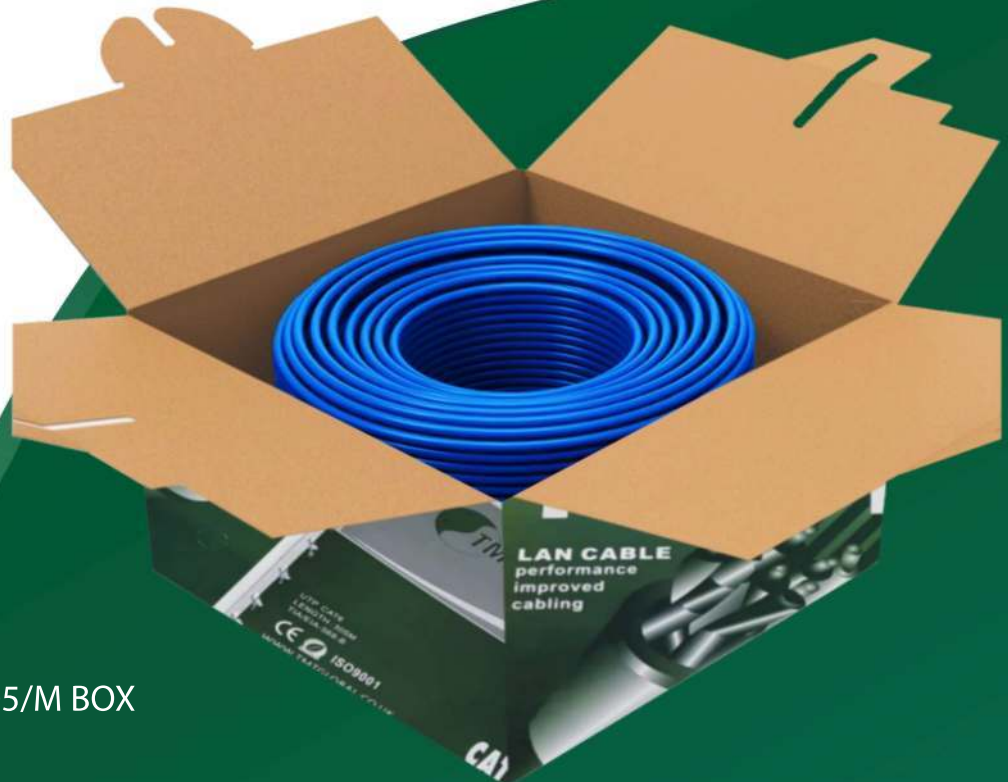
200/M REEL



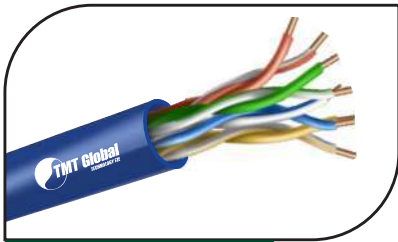
50/M REEL



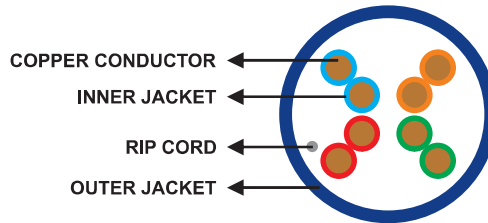
305/M BOX



CAT5E LAN CABLE SERIES



CAT5E U/UTP SERIES



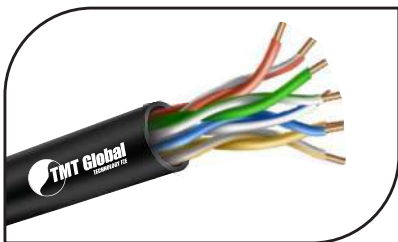
- COPPER CONDUCTOR ←
- INNER JACKET ←
- RIP CORD ←
- OUTER JACKET ←

24AWG 4PAIR CAT5E U/UTP CABLE 305M

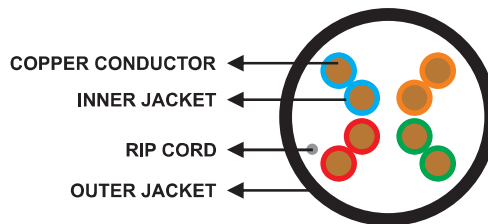
Standards: CAT5e ANSI/TIA/568.2-D 100 MHz CENELEC EN 50288-3
CAT5e IEC 61156-5 (ISO/IEC-11801 Class D)

GENERAL SPECIFICATION

CONDUCTOR: TMT COPPER
CONDUCTOR SIZE: 24AWG
NO. OF PAIRS: 4 TWISTED PAIRS
OVERALL COVERAGE: N/L
OUTER JACKET: PVC
JACKET COLOR: BLACK/GREY/VIOLET/ORANGE
PACKING: 305M / BOX
MODEL NO: TMT-5001
ITEM CODE: 5X142MPB



CAT5E U/UTP SERIES



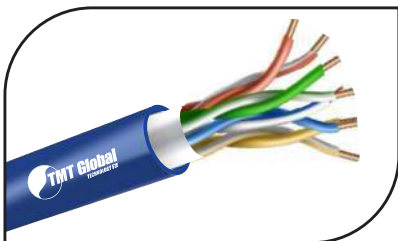
- COPPER CONDUCTOR ←
- INNER JACKET ←
- RIP CORD ←
- OUTER JACKET ←

24AWG 4PAIR CAT5E U/UTP CABLE 305M

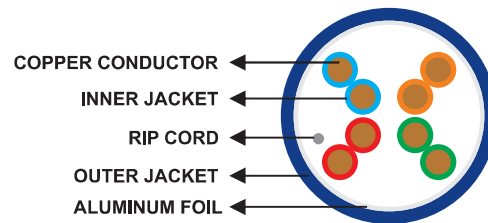
STANDARDS: CAT5E ANSI/TIA/568.2-D 100 MHZ CENELEC EN 50288-3
CAT5E IEC 61156-5 (ISO/IEC-11801 CLASS D)

GENERAL SPECIFICATION

CONDUCTOR: TMT COPPER
CONDUCTOR SIZE: 24AWG
NO. OF PAIRS: 4 TWISTED PAIRS
OVERALL COVERAGE: POLYESTER-PLASTIC TAPE
OUTER JACKET: PE
JACKET COLOR: BLACK
PACKING: 305M / BOX
MODEL NO: TMT-5003
ITEM CODE: 5X142MOK



CAT5E F/UTP SERIES



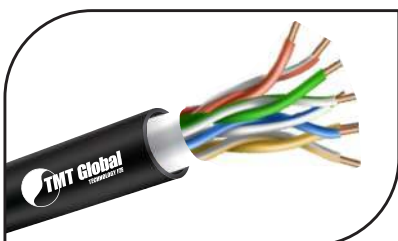
- COPPER CONDUCTOR ←
- INNER JACKET ←
- RIP CORD ←
- OUTER JACKET ←
- ALUMINUM FOIL ←

24AWG 4PAIR CAT5E F/UTP CABLE 305M

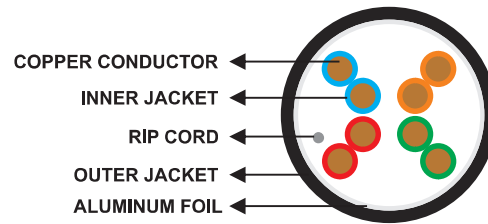
STANDARDS: CAT5E ANSI/TIA/568.2-D 100 MHZ CENELEC EN 50288-3
CAT5E IEC 61156-5 (ISO/IEC-11801 CLASS D)

GENERAL SPECIFICATION

CONDUCTOR: TMT COPPER
CONDUCTOR SIZE: 24AWG
NO. OF PAIRS: 4 TWISTED PAIRS
OVERALL COVERAGE: POLYESTER-ALUMINUM TAPE
OUTER JACKET: PVC
JACKET COLOR: BLACK/BLUE /GREY/VIOLET/ORANGE
PACKING: 305M / BOX
MODEL NO: TMT-5002



CAT5E F/UTP SERIES



- COPPER CONDUCTOR ←
- INNER JACKET ←
- RIP CORD ←
- OUTER JACKET ←
- ALUMINUM FOIL ←

24AWG 4PAIR CAT5E F/UTP CABLE 305M

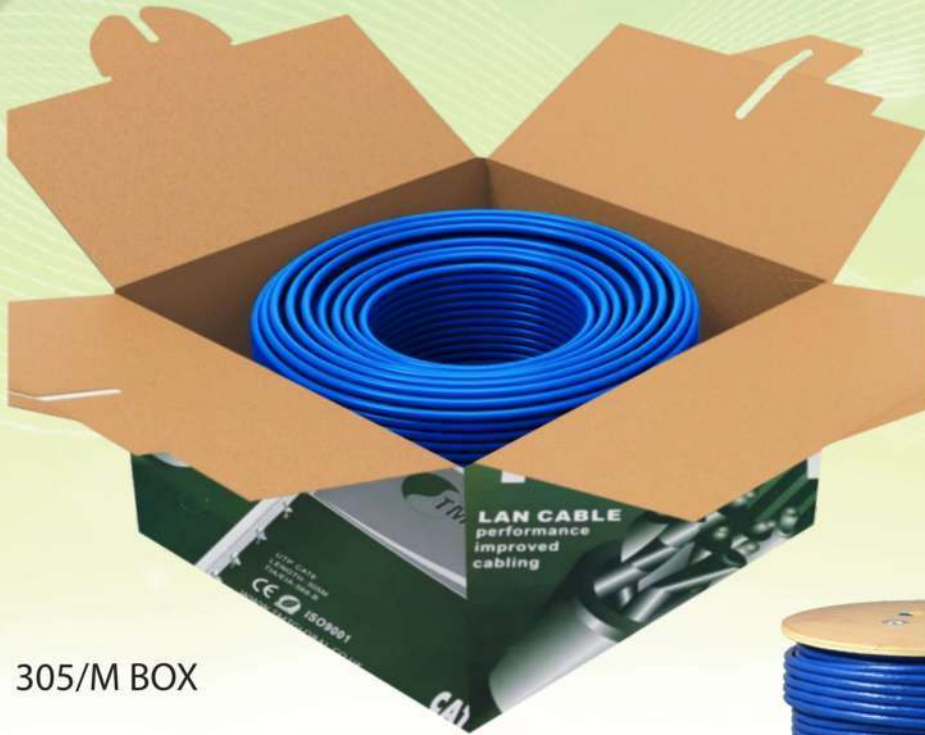
STANDARDS: CAT5E ANSI/TIA/568.2-D 100 MHZ CENELEC EN 50288-3
CAT5E IEC 61156-5 (ISO/IEC-11801 CLASS D)

GENERAL SPECIFICATION

CONDUCTOR: TMT COPPER
CONDUCTOR SIZE: 24AWG
NO. OF PAIRS: 4 TWISTED PAIRS
OVERALL COVERAGE: POLYESTER-ALUMINUM FOIL
OUTER JACKET: PE
JACKET COLOR: BLACK
PACKING: 305M / BOX
MODEL NO: TMT-5004
ITEM CODE: 5X242MOK



CAT6 LAN CABLE SERIES



305/M BOX



305/M DRUM

100/M REEL



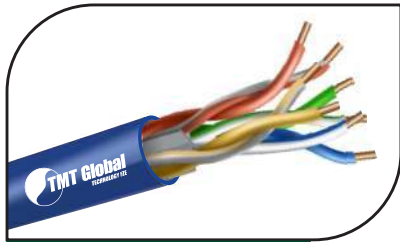
50/M REEL



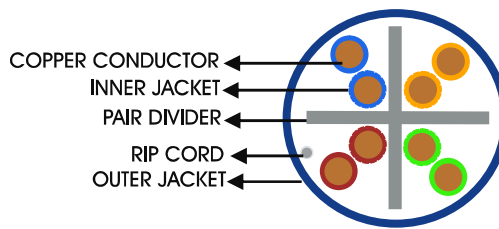
200/M REEL



CAT6 LAN CABLE SERIES



24AWG CAT6 U/UTP CABLE

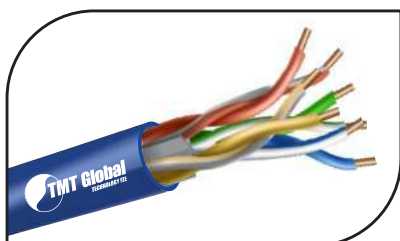


GENERAL SPECIFICATION

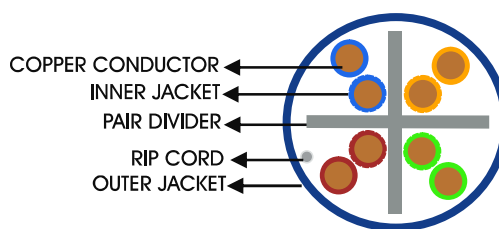
CONDUCTOR: TMT COPPER
CONDUCTOR SIZE: 24AWG
NO. OF PAIRS: 4 TWISTED PAIRS
OVERALL COVERAGE: N/L
OUTER JACKET: PVC
JACKET COLOR:
 BLUE/BLACK/GREY/VIOLET/ORANGE
PACKING: 305M / BOX
MODEL NO: TMT-4002
ITEM CODE: 6X148MPB

24AWG 4PAIR CAT6 U/UTP CABLE 305M

STANDARDS: ANSI/TIA/568.2-D CENELEC EN 50288-5IEC 61156-5 (ISO/IEC-11801 CLASS -E)



24AWG CAT6 U/UTP CABLE

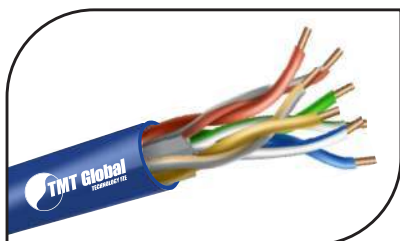


GENERAL SPECIFICATION

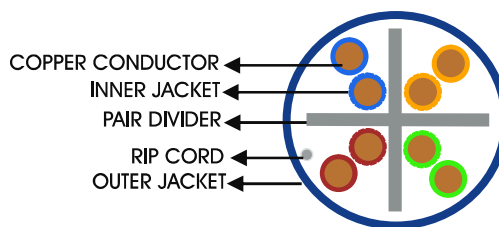
CONDUCTOR: TMT COPPER
CONDUCTOR SIZE: 24AWG
NO. OF PAIRS: 4 TWISTED PAIRS
OVERALL COVERAGE: N/L
OUTER JACKET: PVC
JACKET COLOR: BLUE/BLACK/GREY/VIOLET/ORANGE
PACKING: 305M / BOX
MODEL NO: TMT-4003
ITEM CODE: 6X141MPB

24AWG 4PAIR CAT6 U/UTP CABLE 305M

STANDARDS: ANSI/TIA/568.2-D CENELEC EN 50288-5IEC 61156-5 (ISO/IEC-11801 CLASS -E)



24AWG CAT6 U/UTP CABLE

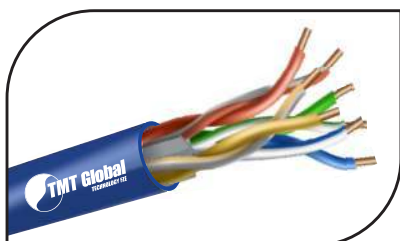


GENERAL SPECIFICATION

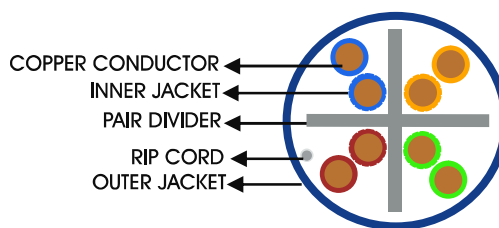
CONDUCTOR: TMT COPPER
CONDUCTOR SIZE: 24AWG
NO. OF PAIRS: 4 TWISTED PAIRS
OVERALL COVERAGE: N/L
OUTER JACKET: PVC
JACKET COLOR:
 BLUE/BLACK/GREY/VIOLET/ORANGE
PACKING: 305M / BOX
MODEL NO: TMT-4004
ITEM CODE: 6X142MPB

24AWG 4PAIR CAT6 U/UTP CABLE 305M

STANDARDS: ANSI/TIA/568.2-D CENELEC EN 50288-5IEC 61156-5 (ISO/IEC-11801 CLASS -E)



24AWG CAT6 U/UTP CABLE



GENERAL SPECIFICATION

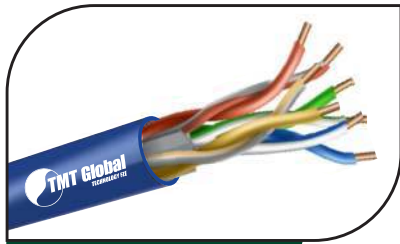
CONDUCTOR: TMT COPPER
CONDUCTOR SIZE: 24AWG
NO. OF PAIRS: 4 TWISTED PAIRS
OVERALL COVERAGE: N/L
OUTER JACKET: LSZH
JACKET COLOR:
 BLUE/BLACK/GREY/VIOLET/ORANGE
PACKING: 305M / BOX
MODEL NO: TMT-4005
ITEM CODE: 6X142MLB

24AWG 4PAIR CAT6 U/UTP CABLE 305M

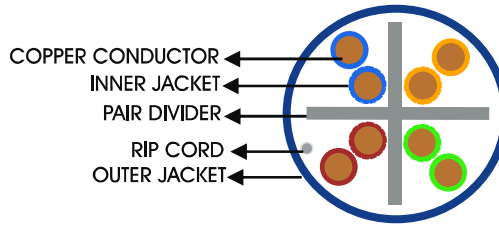
STANDARDS: ANSI/TIA/568.2-D CENELEC EN 50288-5IEC 61156-5 (ISO/IEC-11801 CLASS -E)



CAT6 LAN CABLE SERIES



23AWG CAT6 U/UTP CABLE

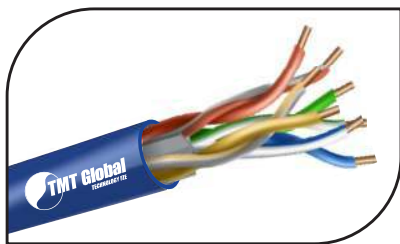


GENERAL SPECIFICATION

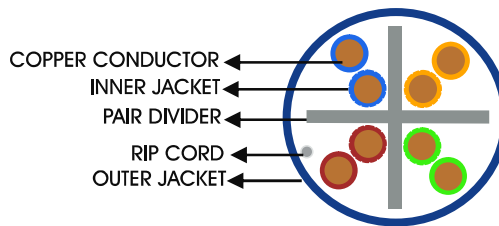
CONDUCTOR: BARE COPPER
CONDUCTOR SIZE: 23AWG
NO. OF PAIRS: 4 TWISTED PAIRS
OVERALL COVERAGE: N/L
OUTER JACKET: PVC
JACKET COLOR:
 BLUE/BLACK/GREY/VIOLET/ORANGE
PACKING: 305M / BOX
MODEL NO: TMT-7401
ITEM CODE: 6X132BPB

23AWG 4PAIR CAT6 U/UTP CABLE 305M

STANDARDS: ANSI/TIA/568.2-D CENELEC EN 50288-5IEC 61156-5 (ISO/IEC-11801 CLASS -E)



23AWG CAT6 U/UTP CABLE

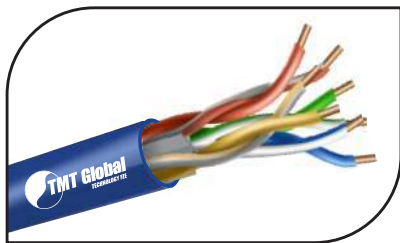


GENERAL SPECIFICATION

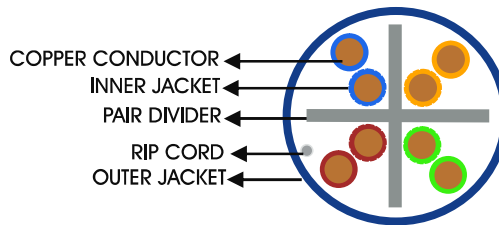
CONDUCTOR: BARE COPPER
CONDUCTOR SIZE: 23AWG
NO. OF PAIRS: 4 TWISTED PAIRS
OVERALL COVERAGE: N/L
OUTER JACKET: LSZH
JACKET COLOR:
 BLUE/BLACK/GREY/VIOLET/ORANGE
PACKING: 305M / BOX
MODEL NO: TMT-7401
ITEM CODE: 6X132BLB

23AWG 4PAIR CAT6 U/UTP CABLE 305M

STANDARDS: ANSI/TIA/568.2-D CENELEC EN 50288-5IEC 61156-5 (ISO/IEC-11801 CLASS -E)



23AWG CAT6 U/UTP CABLE

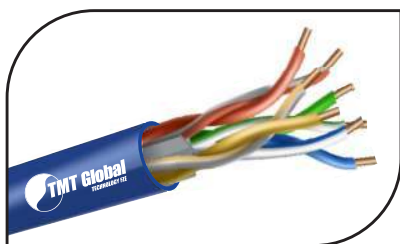


GENERAL SPECIFICATION

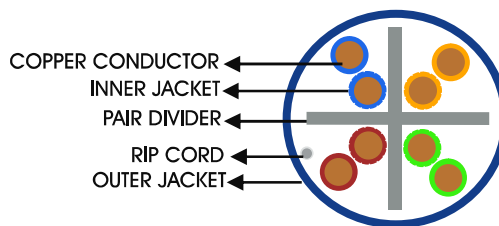
CONDUCTOR: BARE COPPER
CONDUCTOR SIZE: 23AWG
NO. OF PAIRS: 4 TWISTED PAIRS
OVERALL COVERAGE: N/L
OUTER JACKET: PVC
JACKET COLOR:
 BLUE/BLACK/GREY/VIOLET/ORANGE
PACKING: 305M / BOX
MODEL NO: TMT-7401
ITEM CODE: 6X135BPB

23AWG 4PAIR CAT6 U/UTP CABLE 305M

STANDARDS: ANSI/TIA/568.2-D CENELEC EN 50288-5IEC 61156-5 (ISO/IEC-11801 CLASS -E)



23AWG CAT6 U/UTP CABLE



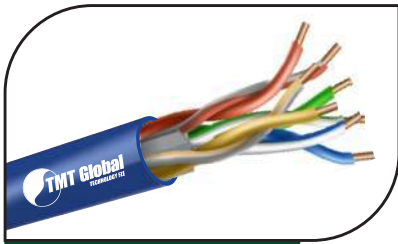
GENERAL SPECIFICATION

CONDUCTOR: BARE COPPER
CONDUCTOR SIZE: 23AWG
NO. OF PAIRS: 4 TWISTED PAIRS
OVERALL COVERAGE: N/L
OUTER JACKET: LSZH
JACKET COLOR:
 BLUE/BLACK/GREY/VIOLET/ORANGE
PACKING: 305M / BOX
MODEL NO: TMT-7401
ITEM CODE: 6X135BLB

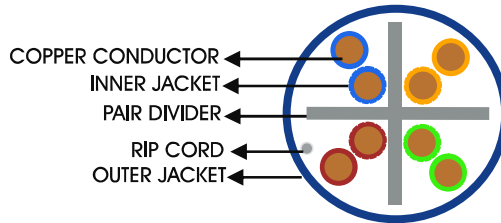
23AWG 4PAIR CAT6 U/UTP CABLE 305M

STANDARDS: ANSI/TIA/568.2-D CENELEC EN 50288-5IEC 61156-5 (ISO/IEC-11801 CLASS -E)

CAT6 LAN CABLE SERIES



23AWG CAT6 U/UTP CABLE

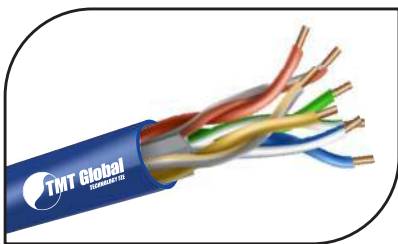


GENERAL SPECIFICATION

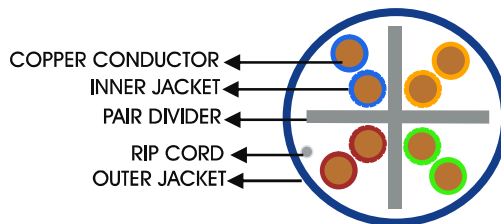
CONDUCTOR: BARE COPPER
CONDUCTOR SIZE: 23AWG
NO. OF PAIRS: 4 TWISTED PAIRS
OVERALL COVERAGE: N/L
OUTER JACKET: PVC
JACKET COLOR: BLUE/BLACK/GREY/VIOLET/ORANGE
PACKING: 305M / BOX
MODEL NO: TMT-7401
ITEM CODE: 6X136BPB

23AWG 4PAIR CAT6 U/UTP CABLE 305M

STANDARDS: ANSI/TIA/568.2-D CENELEC EN 50288-5IEC 61156-5 (ISO/IEC-11801 CLASS -E)



23AWG CAT6 U/UTP CABLE

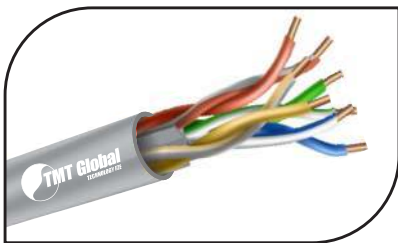


GENERAL SPECIFICATION

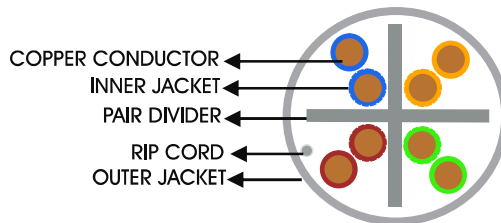
CONDUCTOR: BARE COPPER
CONDUCTOR SIZE: 23AWG
NO. OF PAIRS: 4 TWISTED PAIRS
OVERALL COVERAGE: N/L
OUTER JACKET: LSZH
JACKET COLOR: BLUE/BLACK/GREY/VIOLET/ORANGE
PACKING: 305M / BOX
MODEL NO: TMT-7401
ITEM CODE: 6X136BLB

23AWG 4PAIR CAT6 U/UTP CABLE 305M

STANDARDS: ANSI/TIA/568.2-D CENELEC EN 50288-5IEC 61156-5 (ISO/IEC-11801 CLASS -E)



23AWG CAT6 U/UTP CABLE

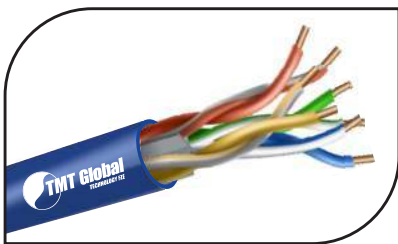


GENERAL SPECIFICATION

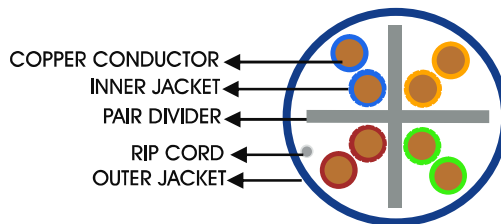
CONDUCTOR: TMT COPPER
CONDUCTOR SIZE: 23AWG
NO. OF PAIRS: 4 TWISTED PAIRS
OVERALL COVERAGE: N/L
OUTER JACKET: PVC
JACKET COLOR: BLUE/BLACK/GREY/VIOLET/ORANGE
PACKING: 305M / BOX
MODEL NO: TMT-7403
ITEM CODE: 6X136MPG

23AWG 4PAIR CAT6 U/UTP CABLE 305M

STANDARDS: ANSI/TIA/568.2-D CENELEC EN 50288-5IEC 61156-5 (ISO/IEC-11801 CLASS -E)



23AWG CAT6 U/UTP CABLE



GENERAL SPECIFICATION

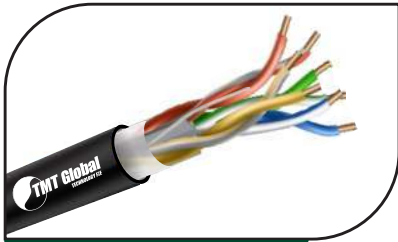
CONDUCTOR: TMT COPPER
CONDUCTOR SIZE: 23AWG
NO. OF PAIRS: 4 TWISTED PAIRS
OVERALL COVERAGE: N/L
OUTER JACKET: LSZH
JACKET COLOR: BLUE/BLACK/GREY/VIOLET/ORANGE
PACKING: 305M / BOX
MODEL NO: TMT-4016
ITEM CODE: 6X136MLB

23AWG 4PAIR CAT6 U/UTP CABLE 305M

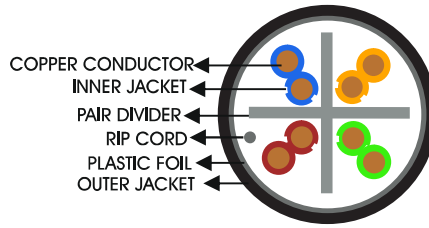
STANDARDS: ANSI/TIA/568.2-D CENELEC EN 50288-5IEC 61156-5 (ISO/IEC-11801 CLASS -E)



CAT6 LAN CABLE SERIES



23AWG CAT6 PF/UTP OUTDOOR SERIES

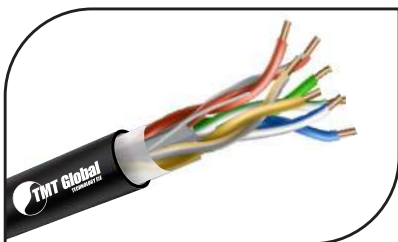


GENERAL SPECIFICATION

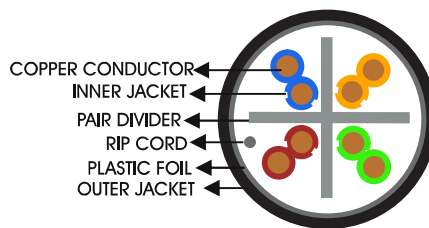
CONDUCTOR: TMT COPPER
CONDUCTOR SIZE: 23AWG
NO. OF PAIRS: 4 TWISTED PAIRS
OVERALL COVERAGE: PLASTIC TAPE
OUTER JACKET: PE
JACKET COLOR:
 BLUE/BLACK/GREY/VIOLET/ORANGE
PACKING: 305M / BOX
MODEL NO: TMT-4025
ITEM CODE: 6X136MOK

23AWG 4PAIR CAT6 PF/UTP CABLE 305M

STANDARDS: ANSI/TIA/568.2-D CENELEC EN 50288-5IEC 61156-5 (ISO/IEC-11801 CLASS -E)



23AWG CAT6 PF/UTP OUTDOOR SERIES

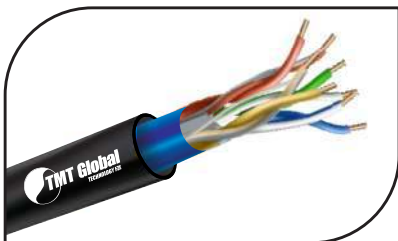


GENERAL SPECIFICATION

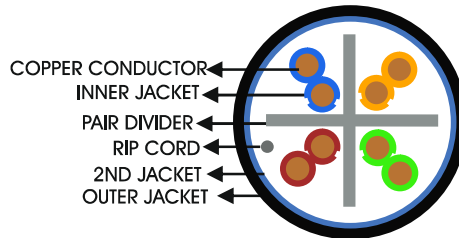
CONDUCTOR: BARE COPPER
CONDUCTOR SIZE: 23AWG
NO. OF PAIRS: 4 TWISTED PAIRS
OVERALL COVERAGE: PLASTIC TAPE
OUTER JACKET: PE
JACKET COLOR:
 BLUE/BLACK/GREY/VIOLET/ORANGE
PACKING: 305M / BOX
MODEL NO: TMT-4025
ITEM CODE: 6X132BOK

23AWG 4PAIR CAT6 PF/UTP CABLE 305M

STANDARDS: ANSI/TIA/568.2-D CENELEC EN 50288-5IEC 61156-5 (ISO/IEC-11801 CLASS -E)



23AWG CAT6 DJ/UTP OUTDOOR CABLE

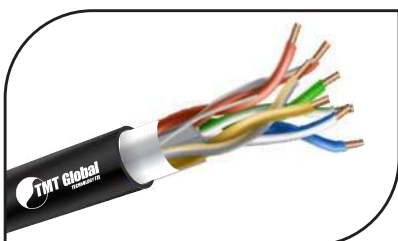


GENERAL SPECIFICATION

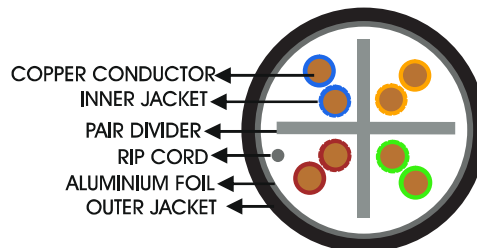
CONDUCTOR: TMT COPPER
CONDUCTOR SIZE: 23AWG
NO. OF PAIRS: 4 TWISTED PAIRS
OVERALL COVERAGE: N/L
OUTER JACKET: PVC+PE
JACKET COLOR:
 BLUE/BLACK/GREY/VIOLET/ORANGE
PACKING: 305M / WOODEN/ PLASTIC REEL
MODEL NO: TMT-4027
ITEM CODE: 6X136MDK

23AWG 4PAIR CAT6 DJ/UTP CABLE 305M

STANDARDS: ANSI/TIA/568.2-D CENELEC EN 50288-5IEC 61156-5 (ISO/IEC-11801 CLASS -E)



23AWG CAT6 F/UTP OUTDOOR CABLE



GENERAL SPECIFICATION

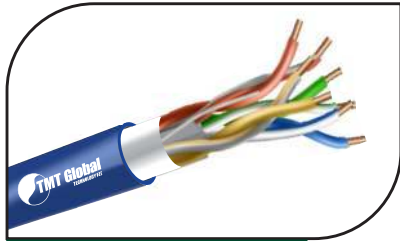
CONDUCTOR: TMT COPPER
CONDUCTOR SIZE: 23AWG
NO. OF PAIRS: 4 TWISTED PAIRS
OVERALL COVERAGE: ALUMINIUM FOIL
OUTER JACKET: PE
JACKET COLOR:
 BLUE/BLACK/GREY/VIOLET/ORANGE
PACKING: 305M / WOODEN/ PLASTIC REEL
MODEL NO: TMT-4028
ITEM CODE: 6X236MOK

23AWG 4PAIR CAT6 F/UTP CABLE 305M

STANDARDS: ANSI/TIA/568.2-D CENELEC EN 50288-5IEC 61156-5 (ISO/IEC-11801 CLASS -E)

CAT6 LAN CABLE SERIES

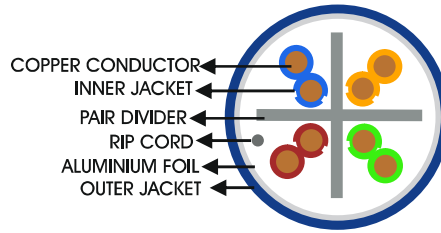
GENERAL SPECIFICATION



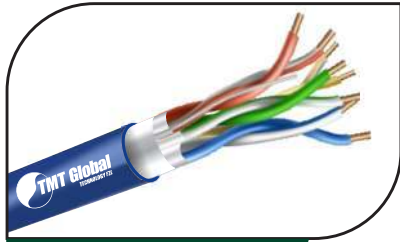
23AWG CAT6 F/UTP CABLE

23AWG 4PAIR CAT6 F/UTP CABLE 305M

STANDARDS: ANSI/TIA/568.2-D CENELEC EN 50288-5 IEC 61156-5 (ISO/IEC-11801 CLASS -E)



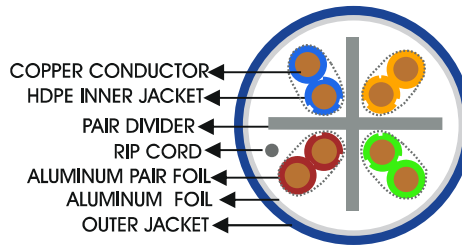
CONDUCTOR: TMT COPPER
CONDUCTOR SIZE: 23AWG
NO. OF PAIRS: 4 TWISTED PAIRS
OVERALL COVERAGE: ALUMINIUM FOIL
OUTER JACKET: LSZH
JACKET COLOR:
BLUE/BLACK/GREY/VIOLET/ORANGE
PACKING: 305M / BOX
MODEL NO: TMT-4035
ITEM CODE: 6X236 MLB



23AWG CAT6 F/FTP CABLE

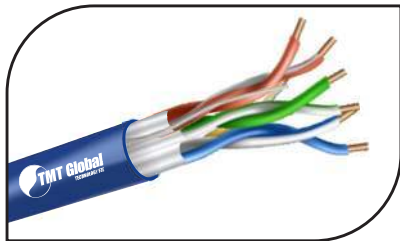
23AWG 4PAIR CAT6 F/FTP CABLE 305M

STANDARDS: ANSI/TIA/568.2-D CENELEC EN 50288-5 IEC 61156-5 (ISO/IEC-11801 CLASS -E)



GENERAL SPECIFICATION

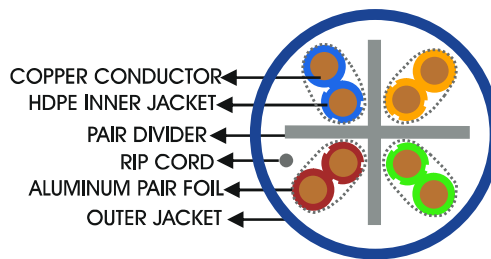
CONDUCTOR: TMT COPPER
CONDUCTOR SIZE: 23AWG
NO. OF PAIRS: 4 TWISTED PAIRS
OVERALL COVERAGE: ALUMINIUM FOIL +PAIR
OUTER JACKET: LSZH
JACKET COLOR:
BLUE/BLACK/GREY/VIOLET/ORANGE
PACKING: 305M / BOX
MODEL NO: TMT-4040
ITEM CODE: 6X436MLB



23AWG CAT6 U/FTP CABLE

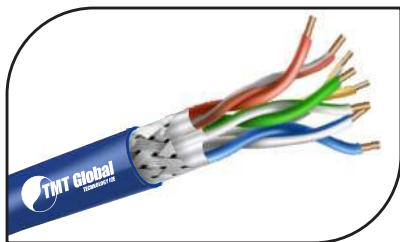
23AWG 4PAIR CAT6 U/FTP CABLE 305M

STANDARDS: ANSI/TIA/568.2-D CENELEC EN 50288-5 IEC 61156-5 (ISO/IEC-11801 CLASS -E)



GENERAL SPECIFICATION

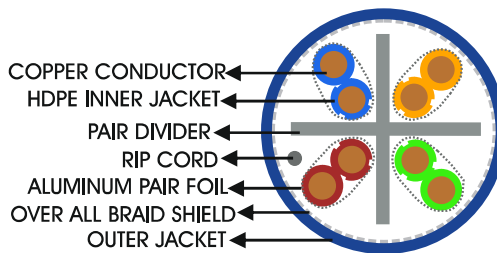
CONDUCTOR: TMT COPPER
CONDUCTOR SIZE: 23AWG
NO. OF PAIRS: 4 TWISTED PAIRS
OVERALL COVERAGE: PAIR ALUMINIUM
OUTER JACKET: LSZH
JACKET COLOR:
BLUE/BLACK/GREY/VIOLET/ORANGE
PACKING: 305M / WOODEN /PLASTIC REEL
MODEL NO: TMT-4045
ITEM CODE: 6X336MLB



23AWG CAT6 S/FTP CABLE

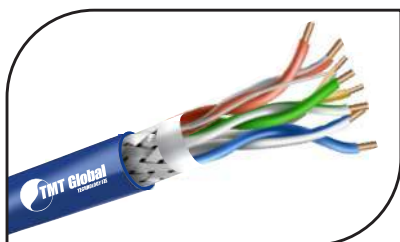
23AWG 4PAIR CAT6 S/FTP CABLE 305M

STANDARDS: ANSI/TIA/568.2-D CENELEC EN 50288-5 IEC 61156-5 (ISO/IEC-11801 CLASS -E)



GENERAL SPECIFICATION

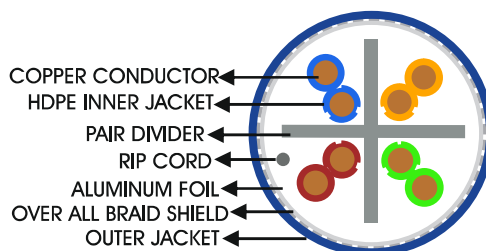
CONDUCTOR: TMT COPPER
CONDUCTOR SIZE: 23AWG
NO. OF PAIRS: 4 TWISTED PAIRS
OVERALL COVERAGE:
BRAIDING + PAIR ALUMINIUM FOIL
OUTER JACKET: LSZH
ACKET COLOR:
BLUE/BLACK/GREY/VIOLET/ORANGE
PACKING: 305M / WOODEN /PLASTIC REEL
MODEL NO: TMT-4050



23AWG CAT6 SF/UTP CABLE

23AWG 4PAIR CAT6 SF/UTP CABLE 305M

STANDARDS: ANSI/TIA/568.2-D CENELEC EN 50288-5 IEC 61156-5 (ISO/IEC-11801 CLASS -E)

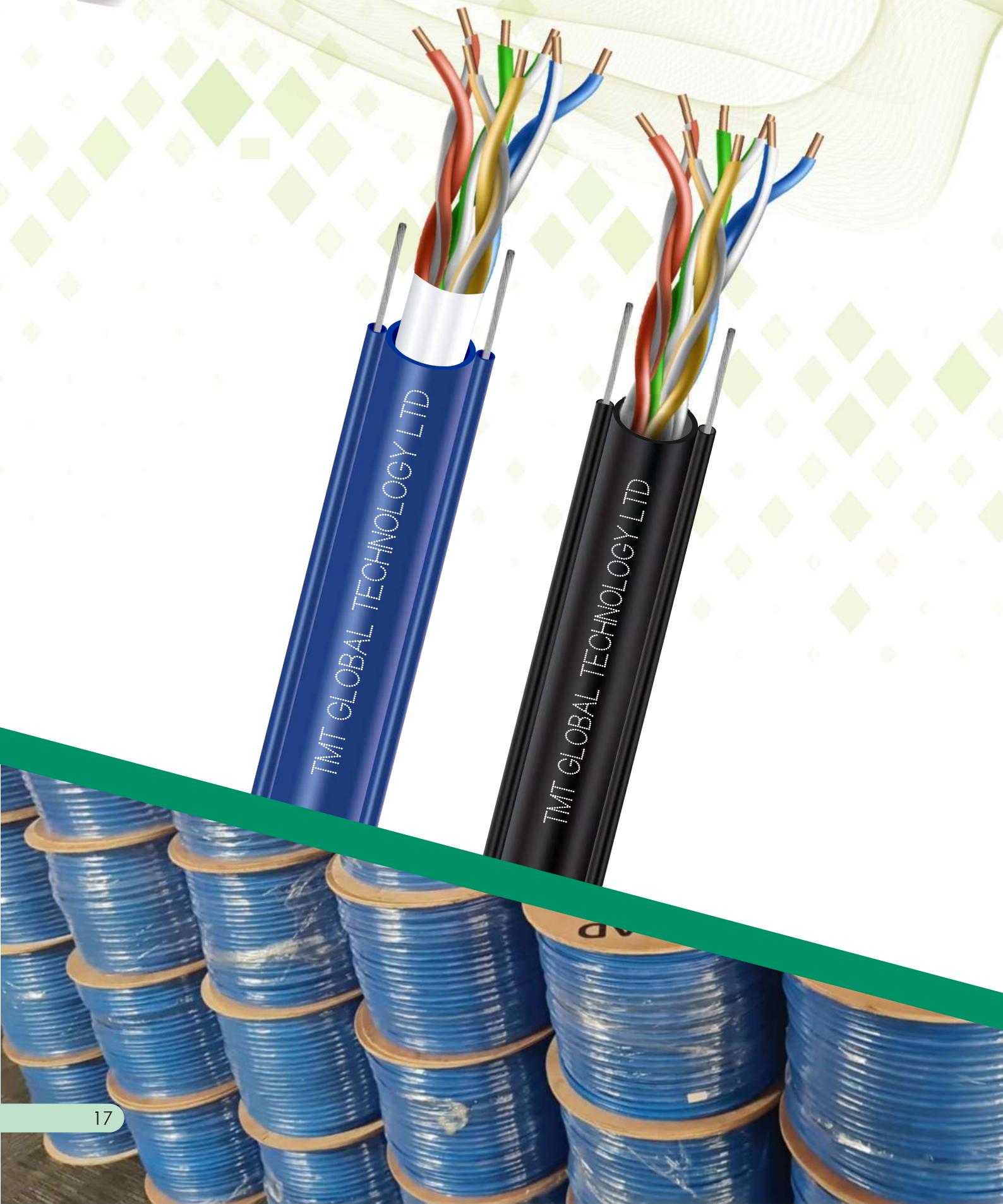


GENERAL SPECIFICATION

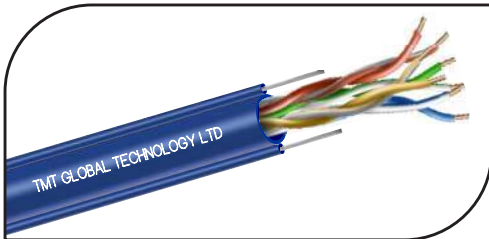
CONDUCTOR: TMT COPPER
CONDUCTOR SIZE: 23AWG
NO. OF PAIRS: 4 TWISTED PAIRS
OVERALL COVERAGE:
BRAIDING +ALUMINIUM FOIL
OUTER JACKET: LSZH
JACKET COLOR:
BLUE/BLACK/GREY/VIOLET/ORANGE
PACKING: 305M / BOX
MODEL NO: TMT-4051



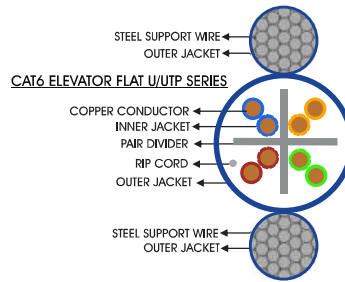
CAT6 ELEVATOR TRAVELING FLAT CABLE



CAT6 ELEVATOR TRAVELING FLAT CABLE



23AWG CAT6 ELEVATOR FLAT U/UTP CABLE

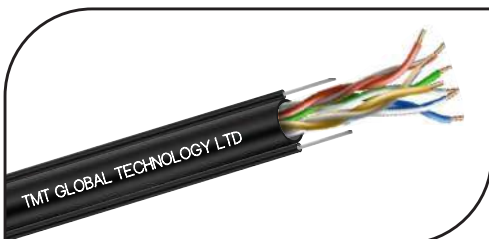


GENERAL SPECIFICATION

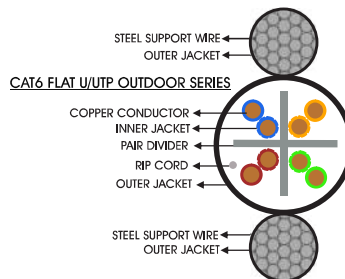
CONDUCTOR: TMT COPPER
CONDUCTOR SIZE: 23AWG
NO. OF PAIRS: 4 TWISTED PAIRS
OVERALL COVERAGE: N/L
OUTER JACKET: ELASTIC PVC
JACKET COLOR:
 BLUE/BLACK/GREY/VIOLET/ORANGE
PACKING: 305M / WOODEN/ PLASTIC REEL
MODEL NO: TMT-4030
ITEM CODE: 6X636MEB

CAT 6 U/UTP 23 AWG FLAT TRAVELLING LAN CABLE

STANDARDS: ANSI/TIA/568.2-D CENELEC EN 50288-5 IEC 61156-5 (ISO/IEC-11801 CLASS -E)



23AWG CAT6 ELEVATOR FLAT U/UTP CABLE

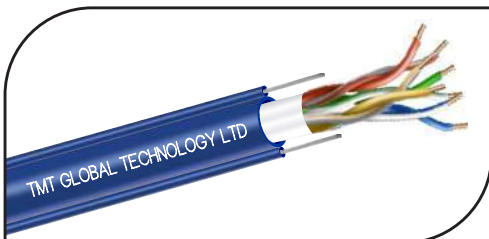


GENERAL SPECIFICATION

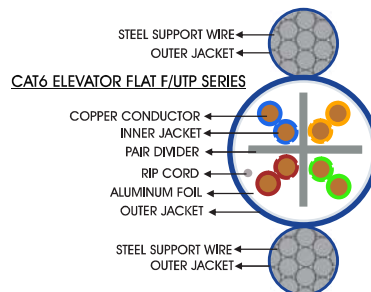
CONDUCTOR: TMT COPPER
CONDUCTOR SIZE: 23AWG
NO. OF PAIRS: 4 TWISTED PAIRS
OVERALL COVERAGE: N/L
OUTER JACKET: ELASTIC PVC
JACKET COLOR:
 BLUE/BLACK/GREY/VIOLET/ORANGE
PACKING: 305M / WOODEN/ PLASTIC REEL
MODEL NO: TMT-4030
ITEM CODE: 6X636MEK

CAT6 U/UTP 23 AWG FLAT TRAVELLING OUTDOOR LAN CABLE

STANDARDS: ANSI/TIA/568.2-D CENELEC EN 50288-5 IEC 61156-5 (ISO/IEC-11801 CLASS -E)



23AWG CAT6 ELEVATOR FLAT F/UTP CABLE



GENERAL SPECIFICATION

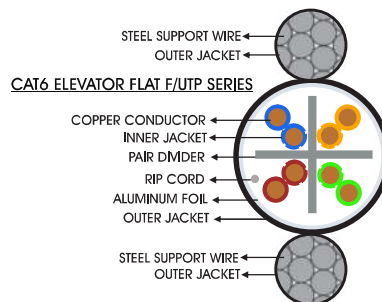
CONDUCTOR: TMT COPPER
CONDUCTOR SIZE: 23AWG
NO. OF PAIRS: 4 TWISTED PAIRS
OVERALL COVERAGE: ALUMINUM FOIL
OUTER JACKET: ELASTIC PVC
JACKET COLOR:
 BLUE/BLACK/GREY/VIOLET/ORANGE
PACKING: 305M / WOODEN/ PLASTIC REEL
MODEL NO: TMT-4032
ITEM CODE: 6X236MEB

CAT6 F/UTP 23 AWG FLAT TRAVELLING LAN CABLE

STANDARDS: ANSI/TIA/568.2-D CENELEC EN 50288-5 IEC 61156-5 (ISO/IEC-11801 CLASS -E)



23AWG CAT6 ELEVATOR FLAT F/UTP CABLE



GENERAL SPECIFICATION

CONDUCTOR: TMT COPPER
CONDUCTOR SIZE: 23AWG
NO. OF PAIRS: 4 TWISTED PAIRS
OVERALL COVERAGE: ALUMINUM FOIL
OUTER JACKET: ELASTIC PVC
JACKET COLOR:
 BLUE/BLACK/GREY/VIOLET/ORANGE
PACKING: 305M / WOODEN/ PLASTIC REEL
MODEL NO: TMT-4034
ITEM CODE: 6X236MEB

CAT6 F/UTP 23 AWG FLAT TRAVELLING LAN CABLE

STANDARDS: ANSI/TIA/568.2-D CENELEC EN 50288-5 IEC 61156-5 (ISO/IEC-11801 CLASS -E)



CAT6A LAN CABLE SERIES

305/M DRUM



200/M REEL

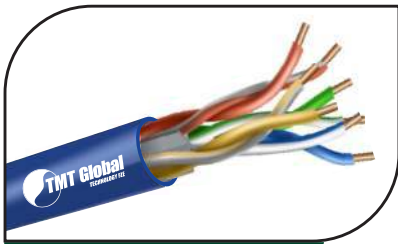


100/M REEL



50/M REEL

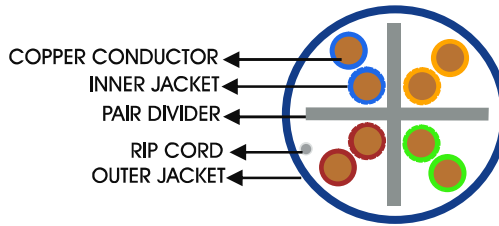
CAT6A LAN CABLE SERIES



23AWG CAT6A U/UTP CABLE

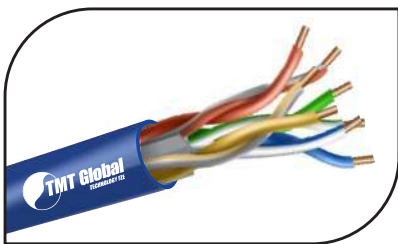
23AWG 4PAIR CAT6A U/UTP CABLE 305M

STANDARDS: ANSI/TIA/568.2-D CENELEC EN 50288-5 IEC 61156-5 (ISO/IEC-11801 CLASS -E)



GENERAL SPECIFICATION

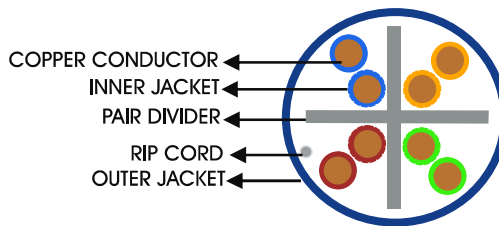
CONDUCTOR: TMT COPPER
CONDUCTOR SIZE: 23AWG
NO. OF PAIRS: 4 TWISTED PAIRS
OVERALL COVERAGE: N/L
OUTER JACKET: PVC
JACKET COLOR:
 BLUE/BLACK/GREY/VIOLET/ORANGE
PACKING: 305M / BOX
MODEL NO: TMT-4060
ITEM CODE: 6A136MPB



23AWG CAT6A U/UTP CABLE

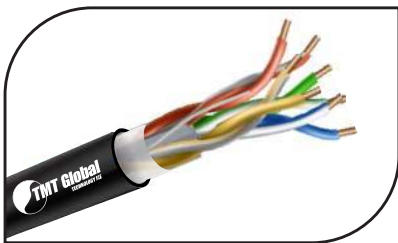
23AWG 4PAIR CAT6A U/UTP CABLE 305M

STANDARDS: ANSI/TIA/568.2-D CENELEC EN 50288-5 IEC 61156-5 (ISO/IEC-11801 CLASS -E)



GENERAL SPECIFICATION

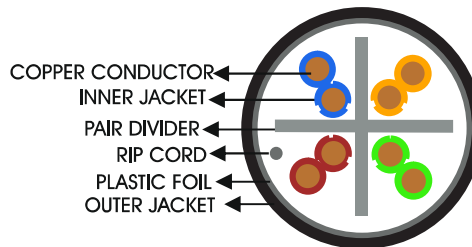
CONDUCTOR: TMT COPPER
CONDUCTOR SIZE: 23AWG
NO. OF PAIRS: 4 TWISTED PAIRS
OVERALL COVERAGE: N/L
OUTER JACKET: LSZH
JACKET COLOR:
 BLUE/BLACK/GREY/VIOLET/ORANGE
PACKING: 305M / BOX
MODEL NO: TMT-4061
ITEM CODE: 6A136MLB



23AWG CAT6 PF/UTP OUTDOOR CABLE

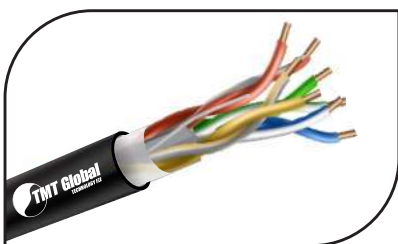
23AWG 4PAIR CAT6A PF/UTP OUTDOOR CABLE 305M

STANDARDS: ANSI/TIA/568.2-D CENELEC EN 50288-5 IEC 61156-5 (ISO/IEC-11801 CLASS -E)



GENERAL SPECIFICATION

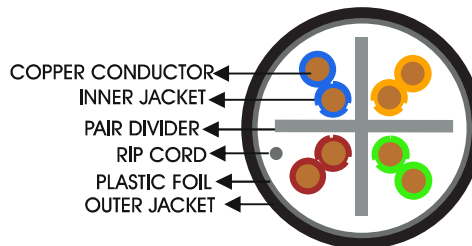
CONDUCTOR: TMT COPPER
CONDUCTOR SIZE: 23AWG
NO. OF PAIRS: 4 TWISTED PAIRS
OVERALL COVERAGE: PLASTIC FOIL
OUTER JACKET: PE
JACKET COLOR:
 BLUE/BLACK/GREY/VIOLET/ORANGE
PACKING: 305M / WOODEN / PLASTIC REEL
MODEL NO: TMT-4063
ITEM CODE: 6A136MOK



23AWG CAT6 PF/UTP OUTDOOR CABLE

23AWG 4PAIR CAT6A PF/UTP OUTDOOR CABLE 305M

STANDARDS: ANSI/TIA/568.2-D CENELEC EN 50288-5 IEC 61156-5 (ISO/IEC-11801 CLASS -E)

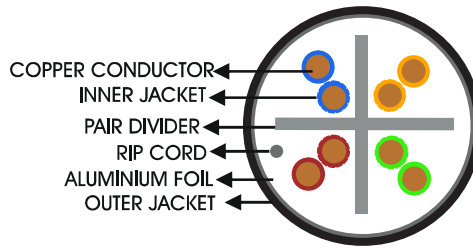
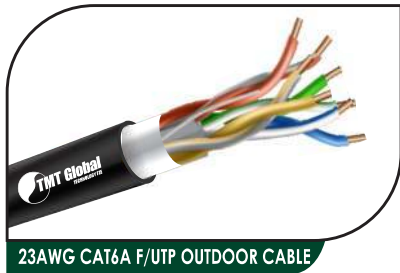


GENERAL SPECIFICATION

CONDUCTOR: BARE COPPER
CONDUCTOR SIZE: 23AWG
NO. OF PAIRS: 4 TWISTED PAIRS
OVERALL COVERAGE: PLASTIC FOIL
OUTER JACKET: PE
JACKET COLOR:
 BLUE/BLACK/GREY/VIOLET/ORANGE
PACKING: 305M / WOODEN / PLASTIC REEL
MODEL NO: TMT-4063
ITEM CODE: 6A132BOK



CAT6A LAN CABLE SERIES

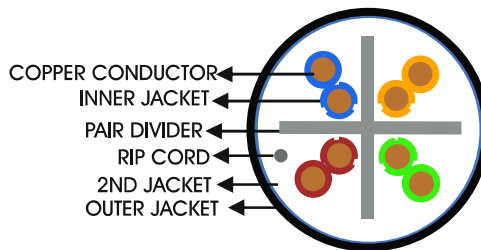
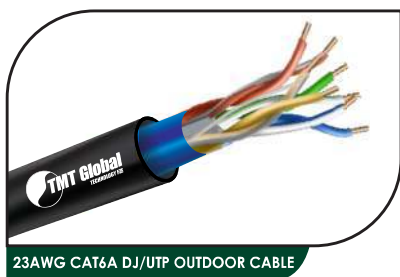


GENERAL SPECIFICATION

CONDUCTOR: TMT COPPER
CONDUCTOR SIZE: 23AWG
NO. OF PAIRS: 4 TWISTED PAIRS
OVERALL COVERAGE: ALUMINIUM FOIL
OUTER JACKET: PE
JACKET COLOR:
 BLUE/BLACK/GREY/VIOLET/ORANGE
PACKING: 305M /WOODEN /PLASTIC REEL
MODEL NO: TMT-4065
ITEM CODE: 6A236MOK

23AWG 4PAIR CAT6A F/UTP CABLE 305M

STANDARDS: ANSI/TIA/568.2-D CENELEC EN 50288-5IEC 61156-5 (ISO/IEC-11801 CLASS -E)

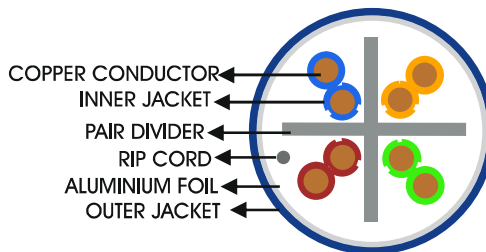
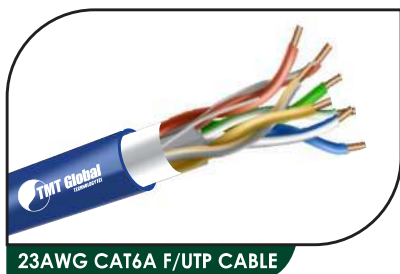


GENERAL SPECIFICATION

CONDUCTOR: TMT COPPER
CONDUCTOR SIZE: 23AWG
NO. OF PAIRS: 4 TWISTED PAIRS
OVERALL COVERAGE: N/L
OUTER JACKET: PVC+PE
JACKET COLOR:
 BLUE/BLACK/GREY/VIOLET/ORANGE
PACKING: 305M / BOX
MODEL NO: TMT-4066
ITEM CODE: 6A136MDK

23AWG 4PAIR CAT6A DJ/UTP CABLE 305M

STANDARDS: ANSI/TIA/568.2-D CENELEC EN 50288-5IEC 61156-5 (ISO/IEC-11801 CLASS -E)

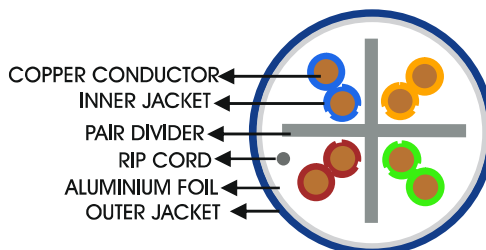
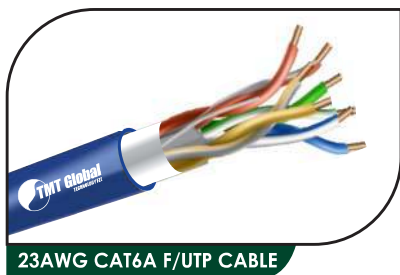


GENERAL SPECIFICATION

CONDUCTOR: TMT COPPER
CONDUCTOR SIZE: 23AWG
NO. OF PAIRS: 4 TWISTED PAIRS
OVERALL COVERAGE: ALUMINIUM FOIL
OUTER JACKET: LSZH
JACKET COLOR:
 BLUE/BLACK/GREY/VIOLET/ORANGE
PACKING: 305M / WOODEN /PLASTIC REEL
MODEL NO: TMT-4070
ITEM CODE: 6A236MLB

23AWG 4PAIR CAT6A F/UTP CABLE 305M

STANDARDS: ANSI/TIA/568.2-D CENELEC EN 50288-5IEC 61156-5 (ISO/IEC-11801 CLASS -E)



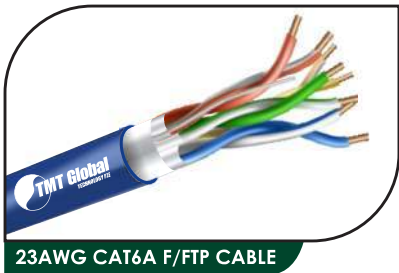
GENERAL SPECIFICATION

CONDUCTOR: BARE COPPER
CONDUCTOR SIZE: 23AWG
NO. OF PAIRS: 4 TWISTED PAIRS
OVERALL COVERAGE: ALUMINIUM FOIL
OUTER JACKET: LSZH
JACKET COLOR:
 BLUE/BLACK/GREY/VIOLET/ORANGE
PACKING: 305M / WOODEN /PLASTIC REEL
MODEL NO: TMT-4063
ITEM CODE: 6A232BLB

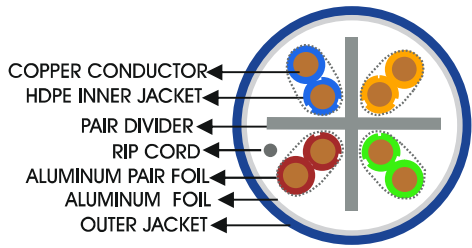
23AWG 4PAIR CAT6A F/UTP CABLE 305M

STANDARDS: ANSI/TIA/568.2-D CENELEC EN 50288-5IEC 61156-5 (ISO/IEC-11801 CLASS -E)

CAT6A LAN CABLE SERIES



23AWG CAT6A F/FTP CABLE

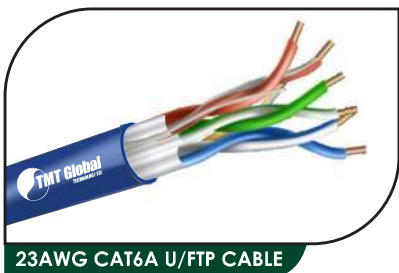


GENERAL SPECIFICATION

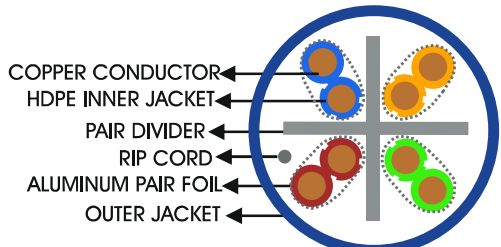
CONDUCTOR: TMT COPPER
CONDUCTOR SIZE: 23AWG
NO. OF PAIRS: 4 TWISTED PAIRS
OVERALL COVERAGE: ALUMINUM FOIL + PAIR FOILED
OUTER JACKET: LSZH
JACKET COLOR: BLUE/BLACK/GREY/VIOLET/ORANGE
PACKING: 305M / WOODEN / PLASTIC REEL
MODEL NO: TMT-4075
ITEM CODE: 6A436MLB

23AWG 4PAIR CAT6A F/FTP CABLE 305M

STANDARDS: ANSI/TIA/568.2-D CENELEC EN 50288-5IEC 61156-5 (ISO/IEC-11801 CLASS -E)



23AWG CAT6A U/FTP CABLE

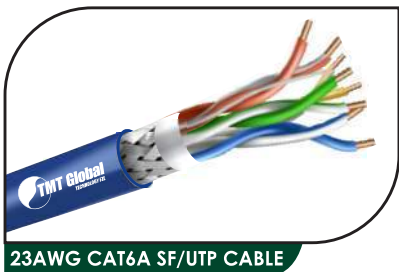


GENERAL SPECIFICATION

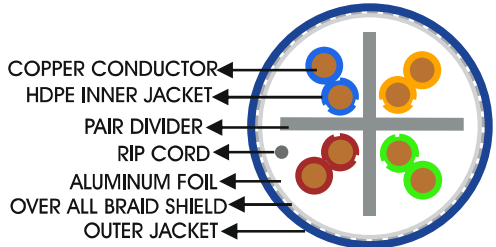
CONDUCTOR: TMT COPPER
CONDUCTOR SIZE: 23AWG
NO. OF PAIRS: 4 TWISTED PAIRS
OVERALL COVERAGE: PAIR ALUMINUM FOIL
OUTER JACKET: LSZH
JACKET COLOR: BLUE/BLACK/GREY/VIOLET/ORANGE
PACKING: 305M / BOX
MODEL NO: TMT-4078
ITEM CODE: 6A336MLB

23AWG 4PAIR CAT6A U/FTP CABLE 305M

STANDARDS: ANSI/TIA/568.2-D CENELEC EN 50288-5IEC 61156-5 (ISO/IEC-11801 CLASS -E)



23AWG CAT6A SF/UTP CABLE

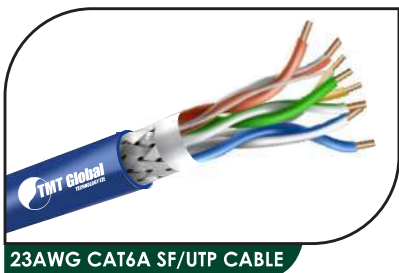


GENERAL SPECIFICATION

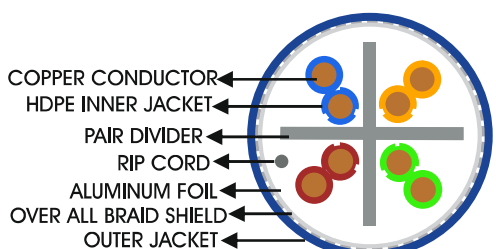
CONDUCTOR: BARE COPPER
CONDUCTOR SIZE: 23AWG
NO. OF PAIRS: 4 TWISTED PAIRS
OVERALL COVERAGE: BRAIDING + ALUMINUM FOIL
OUTER JACKET: LSZH
JACKET COLOR: BLUE/BLACK/GREY/VIOLET/ORANGE
PACKING: 305M / BOX
MODEL NO: TMT-4082

23AWG 4PAIR CAT6A SF/UTP CABLE 305M

STANDARDS: ANSI/TIA/568.2-D CENELEC EN 50288-5IEC 61156-5 (ISO/IEC-11801 CLASS -E)



23AWG CAT6A SF/UTP CABLE



GENERAL SPECIFICATION

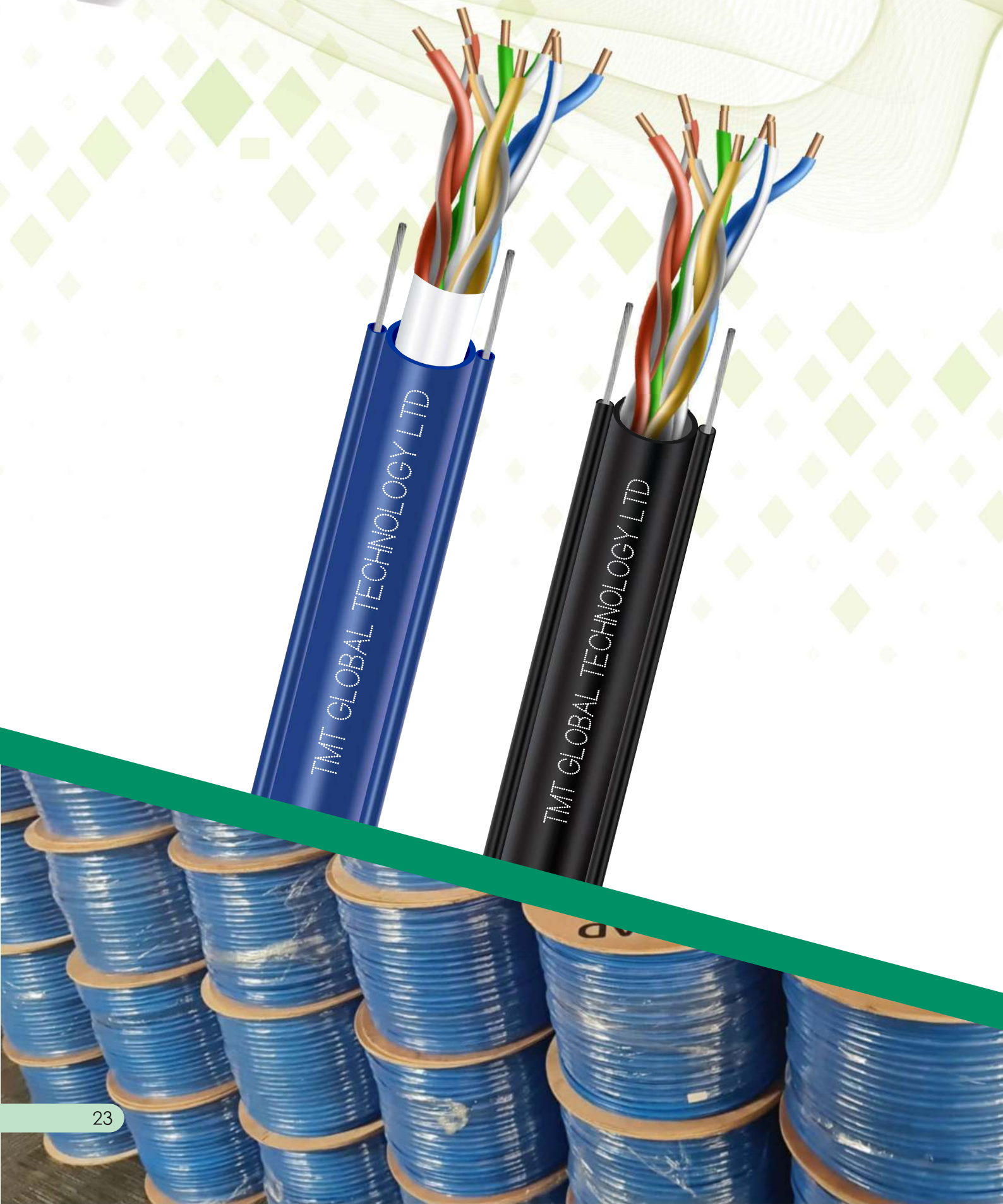
CONDUCTOR: TMT COPPER
CONDUCTOR SIZE: 23AWG
NO. OF PAIRS: 4 TWISTED PAIRS
OVERALL COVERAGE: BRAIDING + ALUMINUM FOIL
OUTER JACKET: LSZH
JACKET COLOR: BLUE/BLACK/GREY/VIOLET/ORANGE
PACKING: 305M / BOX
MODEL NO: TMT-4083

23AWG 4PAIR CAT6A SF/UTP CABLE 305M

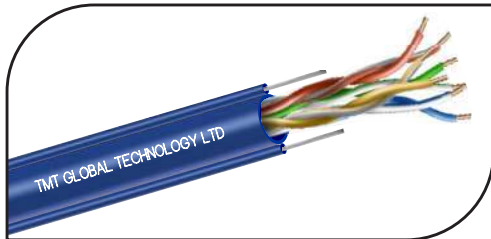
STANDARDS: ANSI/TIA/568.2-D CENELEC EN 50288-5IEC 61156-5 (ISO/IEC-11801 CLASS -E)



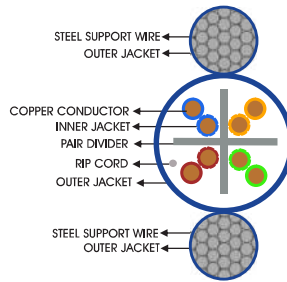
CAT6A ELEVATOR TRAVELING FLAT CABLE



CAT6A ELEVATOR TRAVELING FLAT CABLE



23AWG CAT6A ELEVATOR FLAT U/UTP CABLE



GENERAL SPECIFICATION

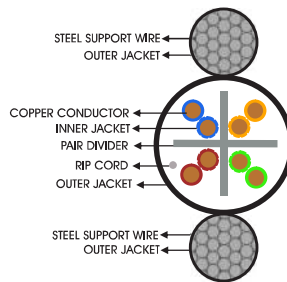
CONDUCTOR: TMT COPPER
CONDUCTOR SIZE: 23AWG
NO. OF PAIRS: 4 TWISTED PAIRS
OVERALL COVERAGE: N/L
OUTER JACKET: ELASTIC PVC
JACKET COLOR:
 BLUE/BLACK/GREY/VIOLET/ORANGE
PACKING: 305M / WOODEN/ PLASTIC REEL
MODEL NO: TMT-4088
ITEM CODE: 6A636MEB

CAT 6A U/UTP 23 AWG FLAT TRAVELLING LAN CABLE

STANDARDS: ANSI/TIA/568.2-D CENELEC EN 50288-5 IEC 61156-5 (ISO/IEC-11801 CLASS -E)



23AWG CAT6A ELEVATOR FLAT U/UTP CABLE

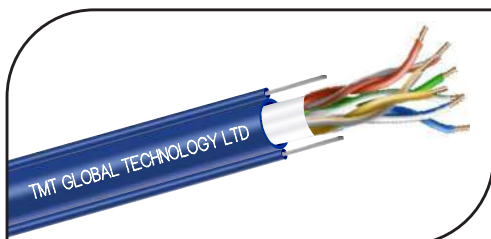


GENERAL SPECIFICATION

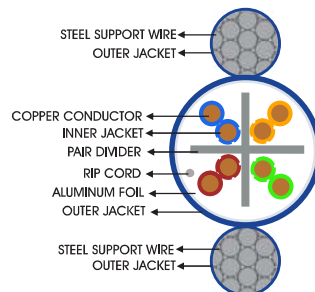
CONDUCTOR: TMT COPPER
CONDUCTOR SIZE: 23AWG
NO. OF PAIRS: 4 TWISTED PAIRS
OVERALL COVERAGE: N/L
OUTER JACKET: ELASTIC PVC
JACKET COLOR:
 BLUE/BLACK/GREY/VIOLET/ORANGE
PACKING: 305M / WOODEN/ PLASTIC REEL
MODEL NO: TMT-4088
ITEM CODE: 6A636MEK

CAT 6A U/UTP 23 AWG LIFT TRAVELLING LAN CABLE

STANDARDS: ANSI/TIA/568.2-D CENELEC EN 50288-5 IEC 61156-5 (ISO/IEC-11801 CLASS -E)



23AWG CAT6A ELEVATOR FLAT F/UTP CABLE



GENERAL SPECIFICATION

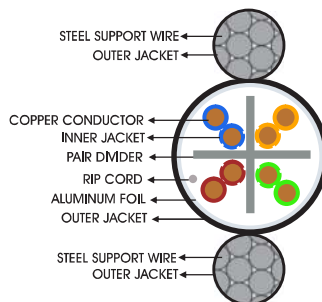
CONDUCTOR: TMT COPPER
CONDUCTOR SIZE: 23AWG
NO. OF PAIRS: 4 TWISTED PAIRS
OVERALL COVERAGE: ALUMINUM FOILED
OUTER JACKET: ELASTIC PVC
JACKET COLOR:
 BLUE/BLACK/GREY/VIOLET/ORANGE
PACKING: 305M / WOODEN/ PLASTIC REEL
MODEL NO: TMT-4089
ITEM CODE: 6A236MEB

CAT 6A F/UTP 23 AWG FLAT TRAVELLING LAN CABLE

STANDARDS: ANSI/TIA/568.2-D CENELEC EN 50288-5 IEC 61156-5 (ISO/IEC-11801 CLASS -E)



23AWG CAT6A ELEVATOR FLAT F/UTP CABLE



GENERAL SPECIFICATION

CONDUCTOR: TMT COPPER
CONDUCTOR SIZE: 23AWG
NO. OF PAIRS: 4 TWISTED PAIRS
OVERALL COVERAGE: ALUMINUM FOILED
OUTER JACKET: ELASTIC PVC
JACKET COLOR:
 BLUE/BLACK/GREY/VIOLET/ORANGE
PACKING: 305M / WOODEN/ PLASTIC REEL
MODEL NO: TMT-4089
ITEM CODE: 6A236MEK

CAT 6A F/UTP 23 AWG LIFT TRAVELLING LAN CABLE

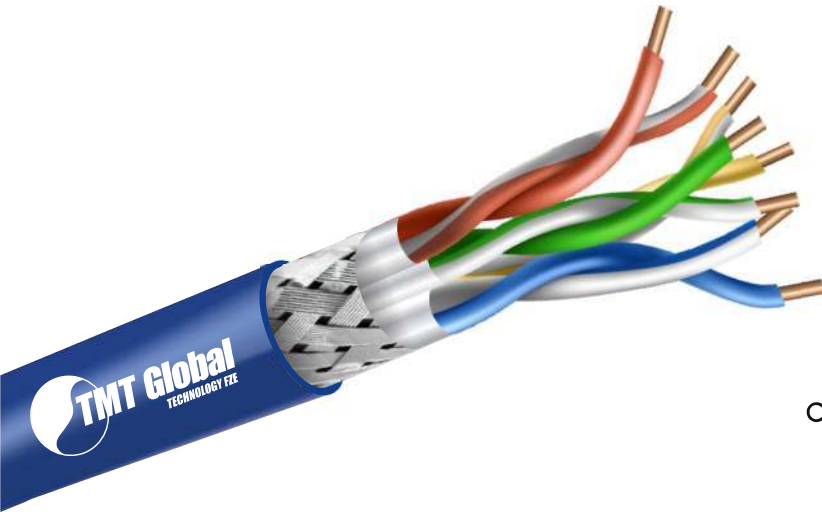
STANDARDS: ANSI/TIA/568.2-D CENELEC EN 50288-5 IEC 61156-5 (ISO/IEC-11801 CLASS -E)



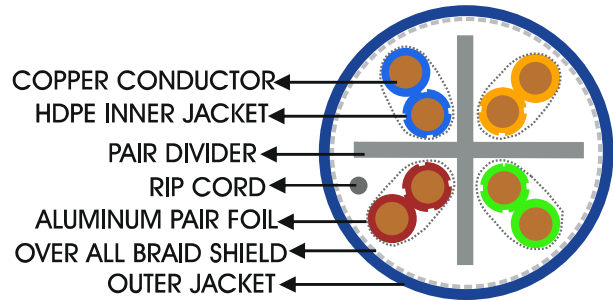
CAT7 SERIES CABLES



CAT7 CABLE SERIES



23AWG CAT7 SF/FTP OUTDOOR CABLE

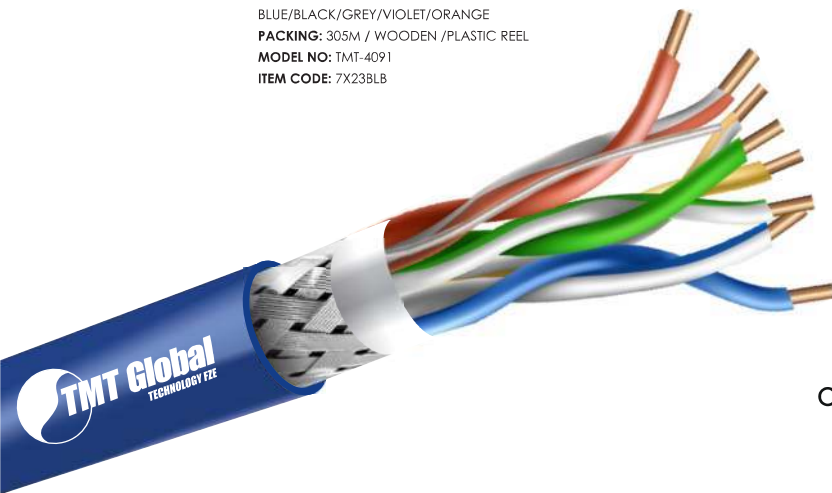


GENERAL SPECIFICATION

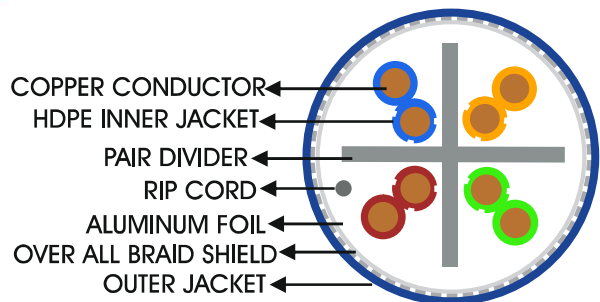
CONDUCTOR: BARE COPPER
CONDUCTOR SIZE: 23AWG
NO. OF PAIRS: 4 TWISTED PAIRS
OVERALL COVERAGE:
 BRAIDING+ ALUMINUM +PAIR ALUMINUM
OUTER JACKET: LSZH
JACKET COLOR:
 BLUE/BLACK/GREY/VIOLET/ORANGE
PACKING: 305M / WOODEN /PLASTIC REEL
MODEL NO: TMT-4091
ITEM CODE: 7X23BLB

CAT7 SF/FTP LAN CABLE

Standards: ANSI/TIA/568.2-D CENELEC EN 50288-5IEC 61156-5 (ISO/IEC-11801 Class-E)



23AWG CAT7 S/FTP OUTDOOR CABLE



GENERAL SPECIFICATION

CONDUCTOR: BARE COPPER
CONDUCTOR SIZE: 23AWG
NO. OF PAIRS: 4 TWISTED PAIRS
OVERALL COVERAGE:
 BRAIDING+ PAIR ALUMINUM
OUTER JACKET: LSZH
JACKET COLOR:
 BLUE/BLACK/GREY/VIOLET/ORANGE
PACKING: 305M / WOODEN /PLASTIC REEL
MODEL NO: TMT-4090
ITEM CODE: 7X53BLB

CAT 7 S/FTP LAN CABLE

STANDARDS: ANSI/TIA/568.2-D CENELEC EN 50288-5IEC 61156-5 (ISO/IEC-11801 CLASS -E)



COAXIAL CABLE SERIES



COAXIAL CABLE SERIES



RG 6 COAXIAL CABLE

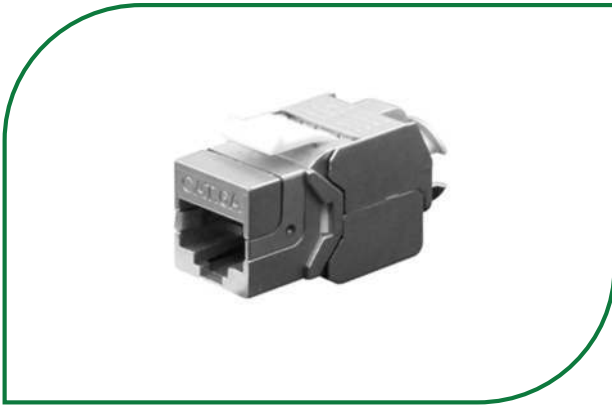


RG 59 COAXIAL CABLE

Specification Summary

Basic Conductor	1.0, 1.13mm (Bare Copper) / (TMT copper)
Braid	CCS
Braid Coverage	98% , 144-.16
Standard Jacket Color	PVC, Black
Standard Packing	305M / Wooden /Plastic Drum

KEYSTONE SERIES



TMT GLOBAL KEYSTONE SERIES



CAT6 UTP KEYSTONE JACK 180°

Features

- ⇒ RJ45 8P 8C 180°C 50u Punch Down Jack
- ⇒ Terminating 4 pairs, 22-26 AWG Cable
- ⇒ Universal labels color coded for T568A and T568B wiring schemes
- ⇒ Fitting high density keystone panel
- ⇒ UL, ETL, RoHS certified



CAT6 UTP KEYSTONE JACK 180° TOOLS LESS

Features

- ⇒ RJ45 8P 8C 180°C 50u Punch Down Jack
- ⇒ Terminating 4 pairs, 22-26 AWG Cable
- ⇒ Universal labels color coded for T568A and T568B wiring schemes
- ⇒ Fitting high density keystone panel
- ⇒ UL, ETL, RoHS certified



CAT6 UTP KEYSTONE JACK FLOOR MOUNTED

Features

- ⇒ RJ45 8P 8C 180°C 50u Punch Down Jack
- ⇒ Terminating 4 pairs, 22-26 AWG Cable
- ⇒ Universal labels color coded for T568A and T568B wiring schemes
- ⇒ Fitting high density keystone panel
- ⇒ UL, ETL, RoHS certified



CAT6A UTP KEYSTONE JACK 180° TOOLS LESS

Features

- ⇒ RJ45 8P 8C 180°C 50u Punch Down Jack
- ⇒ Terminating 4 pairs, 22-26 AWG Cable
- ⇒ Universal labels color coded for T568A and T568B wiring schemes
- ⇒ Fitting high density keystone panel
- ⇒ UL, ETL, RoHS certified



CAT6A STP KEYSTONE JACK 180° TOOLS LESS

Features

- ⇒ RJ45 8P 8C 180°C 50u Punch Down Jack
- ⇒ Terminating 4 pairs, 22-26 AWG Cable
- ⇒ Universal labels color coded for T568A and T568B wiring schemes
- ⇒ Fitting high density keystone panel
- ⇒ UL, ETL, RoHS certified

DATA PATCH PANEL SERIES



TMT GLOBAL DATA PATCH PANEL SERIES



12PORT CAT6 UNLOADED PATCH PANEL



24PORT CAT6 UNLOADED PATCH PANEL

PHYSICAL AND MECHANICAL PROPERTIES

Type	CAT5E/CAT6 UNLOADED PATCH PANEL
Wire size range	22 to 26 AWG, Solid or stranded Cables
Material of construction	Galvanized Steel
Standard Color	Black/Grey
Connector module holder	High impact, Flame-retardant plastic compound,UL 94 V-0
Housing material	High impact, Flame-retardant plastic compound,UL 94 V-0
Storage temperature range	-20 to +80C
Temperature operating range	-40 to +60C
Packaging	One unit per box

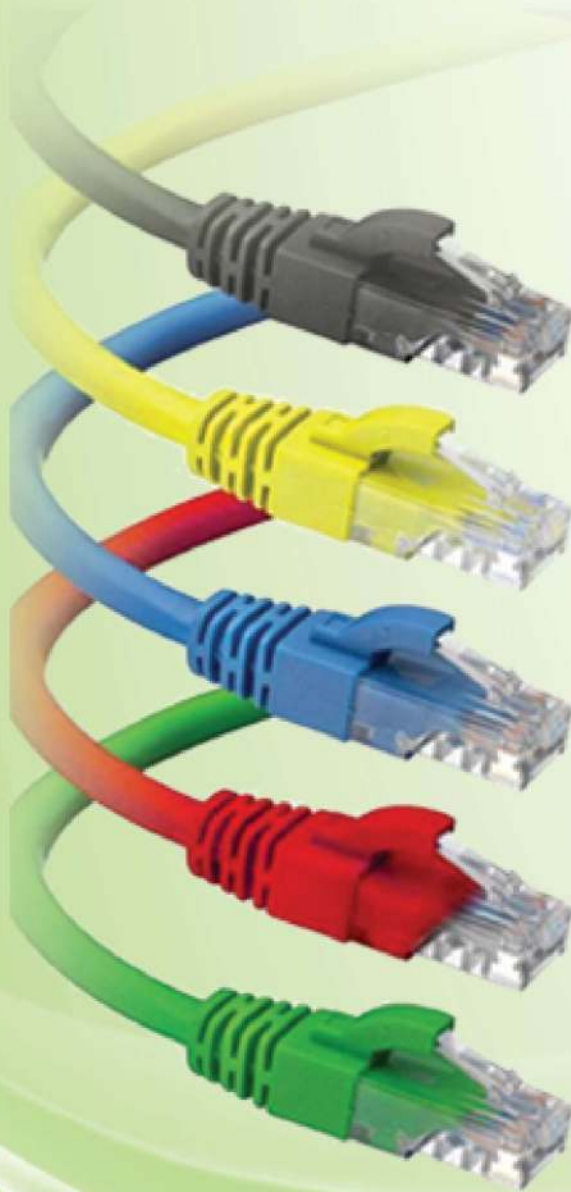


24PORT CAT6A UNLOADED PATCH PANEL

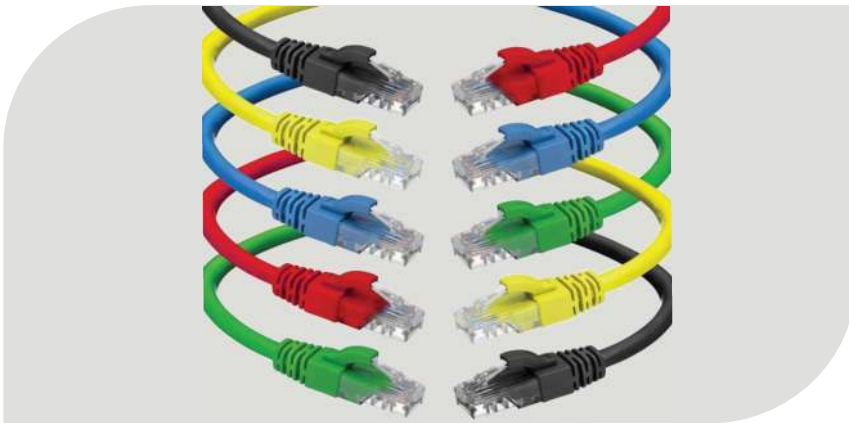
PHYSICAL AND MECHANICAL PROPERTIES

Type	CAT6A UNLOADED PATCH PANEL
Wire size range	22 to 26 AWG, Solid or stranded Cables
Material of construction	SPCC
Standard Color	Black/Grey
Connector module holder	High impact, Flame-retardant plastic compound, UL 94 V-0
Housing material	High impact, Flame-retardant plastic compound, UL 94 V-0
Storage temperature range	-20 to +80C
Temperature operating range	-40 to +60C
Packaging	One unit per box

DATA PATCH CORD SERIES



TMT GLOBAL DATA PATCH CORD SERIES



**01-30M CAT6/CAT6A
DATA PATCH CORD**

PHYSICAL AND MECHANICAL PROPERTIES

Type	CAT6/CAT6A DATA PATCH CORD
Basic Conductor	23/24 AWG, bare annealed copper
Insulation	Polyolefin
Number of insulated conductors	8, twisted in 4 pairs
Color Code of Pairs	Orange x White/Orange, Green x White/Green, Blue x White/Blue, Brown x White/Brown
Outer Jacket	LS0H Halogen free flame retardant/ PVC
RJ45 Plug	8P8C 50U" U-TYPE 94-V2
Cable OD	6.0 ±0.2 mm

**RJ45 TO RJ11 CAT6
DATA PATCH CORD**



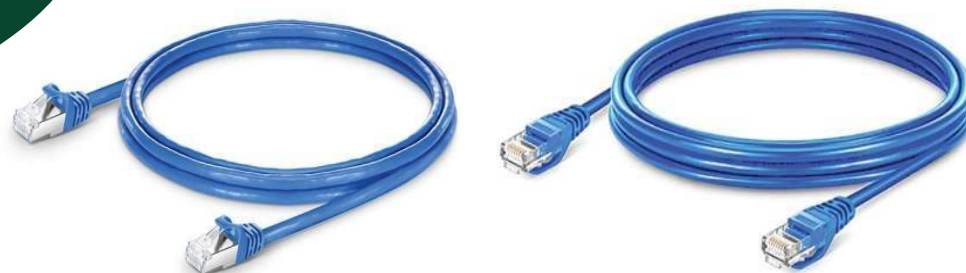
**19" 5 RING/ 12" 3 RING
CABLE MANAGER**



**86X86 SINGLE PORT FLAT
DATA SOCKET WHITE**



**86X86 DUAL PORT FLAT
DATA SOCKET WHITE**



CAT6 STP PATCH CORD SERIES

GENERAL SPECIFICATION

Description	0.15 M CAT6 STP PATCH CORD BLUE COLOR
Conductor Resistance	$\leq 5\Omega - \leq 20\Omega$
Insulation Resistance	$\geq 10M\Omega$
Characteristic Impedance	100 — 6 Ohm @ 1-250MHz -1-500 MHz
Contact Resistance	20 m Ohm max.
Resistance unbalance	2% max
Dielectric strength	1000 volts/1 minute min rms
Cable to Plug Tensile Strength	9 Kgf (90N) min
Durability	1200
Temperature Operating Range	-25°C to +70°C
Model No	6X3SBB00

CAT6 UTP PATCH CORD SERIES

GENERAL SPECIFICATION

Description	0.15 M CAT6 UTP PATCH CORD BLUE COLOR
Conductor Resistance	$\leq 5\Omega - \leq 20\Omega$
Insulation Resistance	$\geq 10M\Omega$
Characteristic Impedance	100 — 6 Ohm @ 1-250MHz -1-500 MHz
Contact Resistance	20 m Ohm max.
Resistance unbalance	2% max
Dielectric strength	1000 volts/1 minute min rms
Cable to Plug Tensile Strength	9 Kgf (90N) min
Durability	1200
Temperature Operating Range	-25°C to +70°C
Model No	6X3PBB00



CAT6A STP PATCH CORD SERIES

GENERAL SPECIFICATION

Description	0.15 M CAT6A STP PATCH CORD BLACK COLOR
Conductor Resistance	$\leq 5\Omega - \leq 20\Omega$
Insulation Resistance	$\geq 10M\Omega$
Characteristic Impedance	100 — 6 Ohm @ 1-250MHz -1-500 MHz
Contact Resistance	20 m Ohm max.
Resistance unbalance	2% max
Dielectric strength	1000 volts/1 minute min rms
Cable to Plug Tensile Strength	9 Kgf (90N) min
Durability	1200
Temperature Operating Range	-25°C to +70°C
Model No	6A3SBK00

CAT6A UTP PATCH CORD SERIES

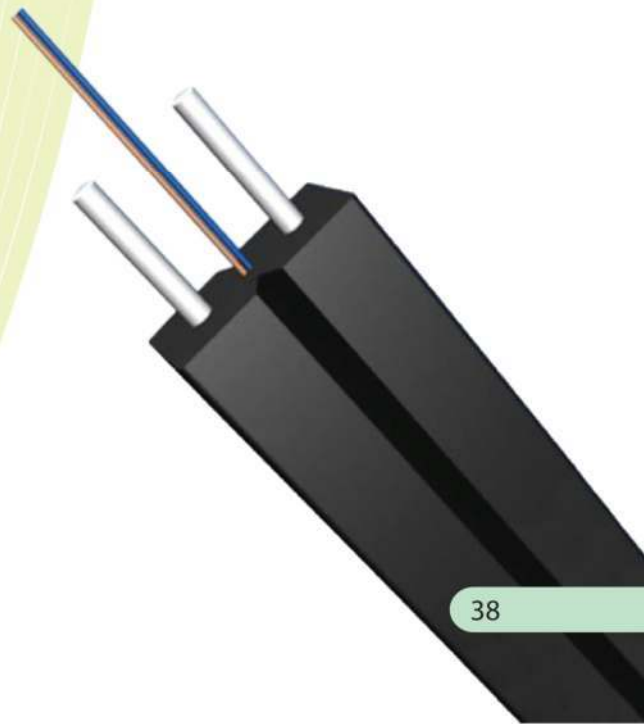
GENERAL SPECIFICATION

Description	0.15 M CAT6A UTP PATCH CORD BLACK COLOR
Conductor Resistance	$\leq 5\Omega - \leq 20\Omega$
Insulation Resistance	$\geq 10M\Omega$
Characteristic Impedance	100 — 6 Ohm @ 1-250MHz -1-500 MHz
Contact Resistance	20 m Ohm max.
Resistance unbalance	2% max
Dielectric strength	1000 volts/1 minute min rms
Cable to Plug Tensile Strength	9 Kgf (90N) min
Durability	1200
Temperature Operating Range	-25°C to +70°C
Model No	6A3PBK00

FIBER OPTICS PRODUCTS SERIES



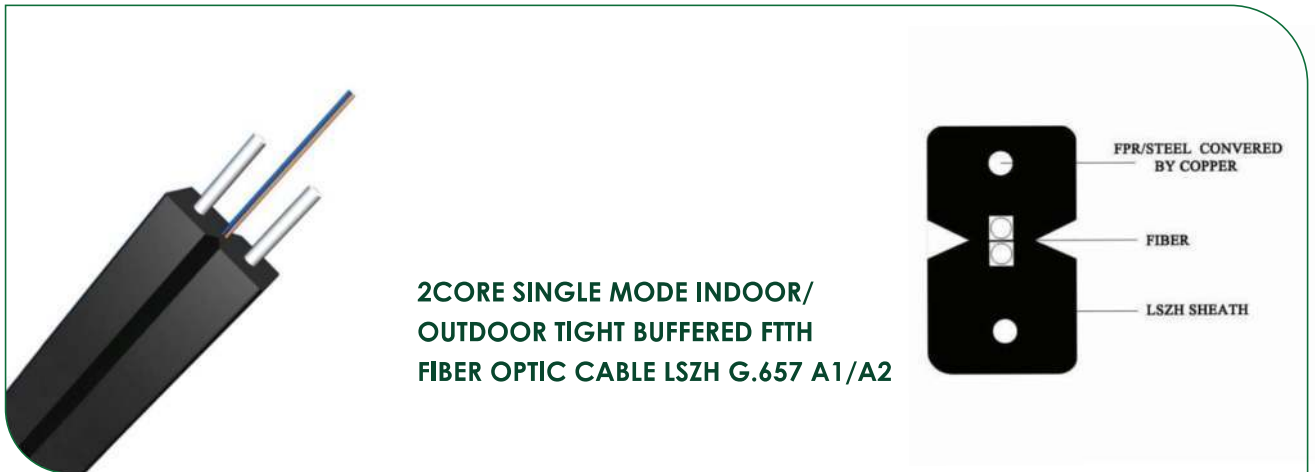
SINGLE MODE FIBER OPTICS CABLES SERIES



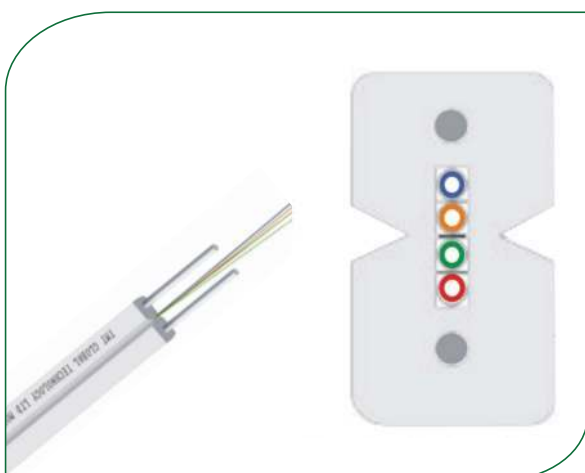
SINGLE MODE FIBER OPTICS CABLES SERIES



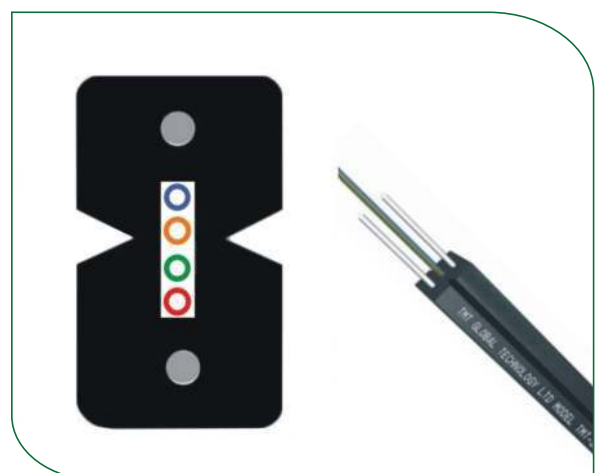
**2CORE SINGLE MODE INDOOR TIGHT BUFFERED FTTH
FIBER OPTIC CABLE LSZH G.657 A1/A2**



**2CORE SINGLE MODE INDOOR/
OUTDOOR TIGHT BUFFERED FTTH
FIBER OPTIC CABLE LSZH G.657 A1/A2**



**4CORE SINGLE MODE INDOOR
TIGHT BUFFERED FTTH
FIBER OPTIC CABLE LSZH G.657 A1/A2**



**4CORE SINGLE MODE INDOOR
TIGHT BUFFERED FTTH
FIBER OPTIC CABLE LSZH G.657 A1/A2**

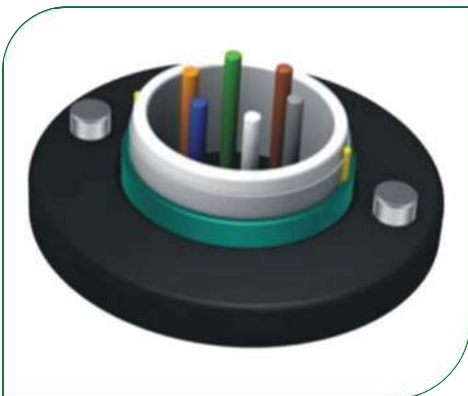
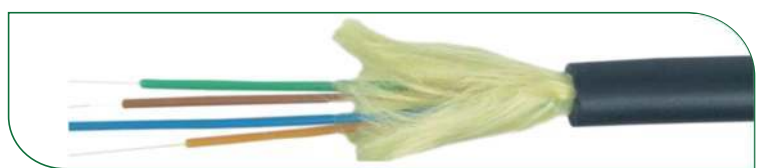
SINGLE MODE FIBER OPTICS CABLES SERIES



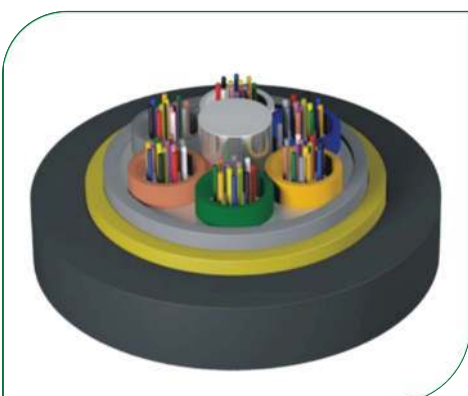
8,12,24 CORE SINGLE MODE INDOOR TIGHT BUFFERED FIBER OPTIC CABLE LSZH G.652D



12,24 CORE SINGLE MODE INDOOR/OUTDOOR FIBER OPTIC CABLE G.652D



8,12,24 CORE SINGLE MODE INDOOR/OUTDOOR ARMoured FIBER OPTIC CABLE G.652D



48,96 CORE SINGLE MODE INDOOR/OUTDOOR ARMoured FIBER OPTIC CABLE G.652D



MULTI MODE FIBER OPTICS CABLES SERIES



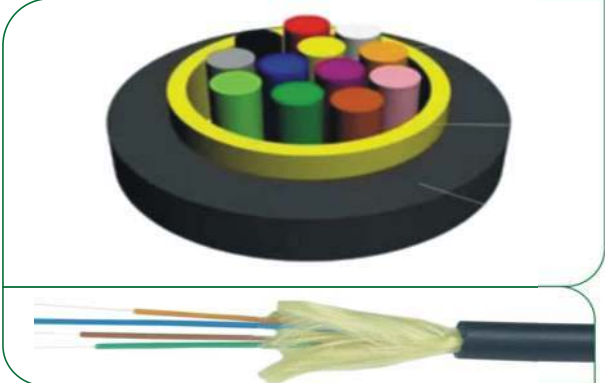
TMT GLOBAL MULTI MODE FIBER OPTICS CABLES SERIES

OM2



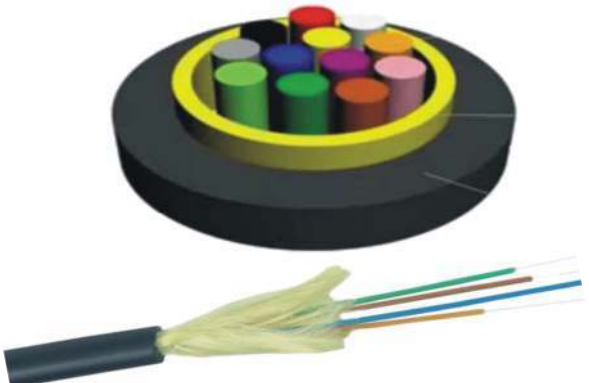
**6,12,24 CORE MULTI MODE INDOOR/ OUTDOOR
ARMOURED FIBER OPTIC CABLE OM2**

OM2



**6,12,24 CORE MULTI MODE INDOOR/OUTDOOR
FIBER OPTIC CABLE OM2**

OM3



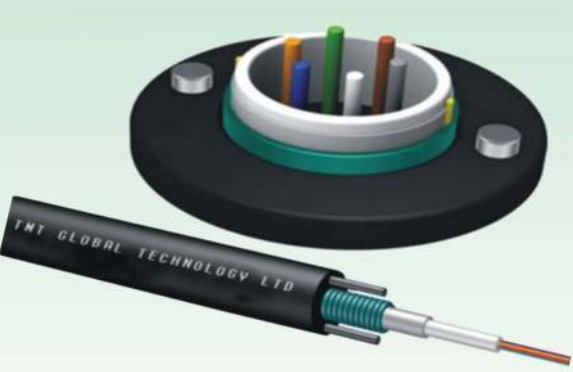
**6,12,24 CORE MULTI MODE INDOOR/OUTDOOR
FIBER OPTIC CABLE OM3**

OM3



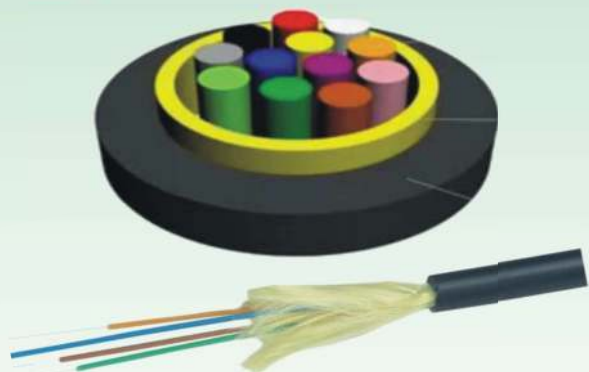
**6,12,24 CORE MULTI MODE INDOOR/OUTDOOR
ARMOURED FIBER OPTIC CABLE OM3**

OM4



**6,12,24 CORE MULTI MODE INDOOR/OUTDOOR
ARMOURED FIBER OPTIC CABLE OM4**

OM4

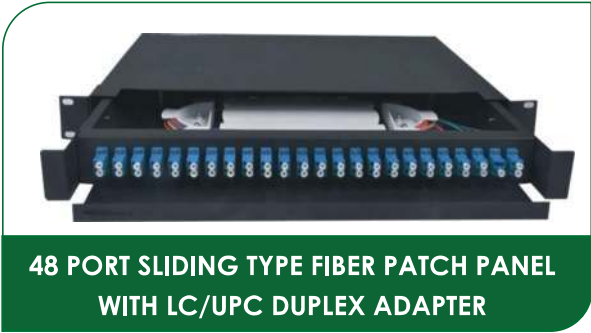
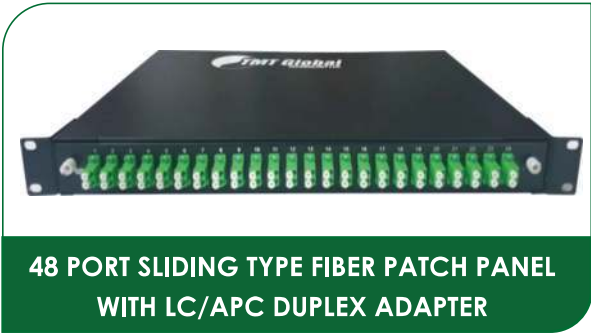
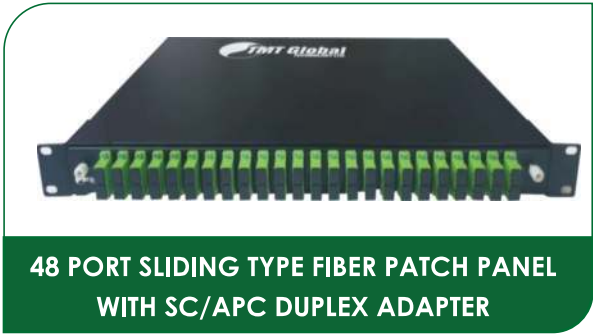


**6,12,24 CORE MULTI MODE INDOOR/OUTDOOR
FIBER OPTIC CABLE OM4**

FIBER OPTICS PATCH PANNEL SERIES



TMT GLOBAL FIBER OPTICS PATCH PANEL SERIES

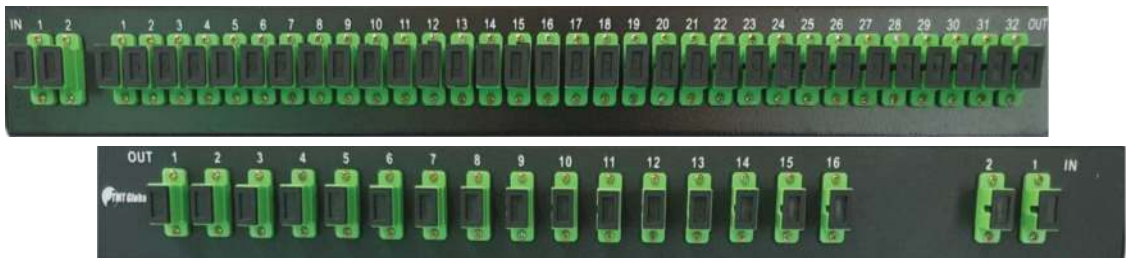


TMT GLOBAL WALL MOUNTED ODF SERIES

- ⇒ 24CORE WALL MOUNTED ODF
- ⇒ 48CORE WALL MOUNTED ODF
- ⇒ 72CORE WALL MOUNTED ODF
- ⇒ 96CORE WALL MOUNTED ODF
- ⇒ 128CORE WALL MOUNTED ODF
- ⇒ 144CORE WALL MOUNTED ODF
- ⇒ 244CORE WALL MOUNTED ODF



FIBER OPTICS SPLITTERS SERIES



TMT GLOBAL FIBER OPTICS SPLITTERS SERIES



- ⇒ 2X2 SC/APC SM RACK MOUNT SPLITTER

- ⇒ 2X4 SC/APC SM RACK MOUNT SPLITTER

- ⇒ 2X8 SC/APC SM RACK MOUNT SPLITTER

- ⇒ 2X12 SC/APC SM RACK MOUNT SPLITTER

- ⇒ 2X16 SC/APC SM RACK MOUNT SPLITTER

- ⇒ 2X32 SC/APC SM RACK MOUNT SPLITTER

TMT GLOBAL SC/APC SPLITTERS SERIES

- ⇒ 2X2 LC/APC SM RACK MOUNT SPLITTER

- ⇒ 2X4 LC/APC SM RACK MOUNT SPLITTER

- ⇒ 2X8 LC/APC SM RACK MOUNT SPLITTER

- ⇒ 2X12 LC/APC SM RACK MOUNT SPLITTER

- ⇒ 2X16 LC/APC SM RACK MOUNT SPLITTER

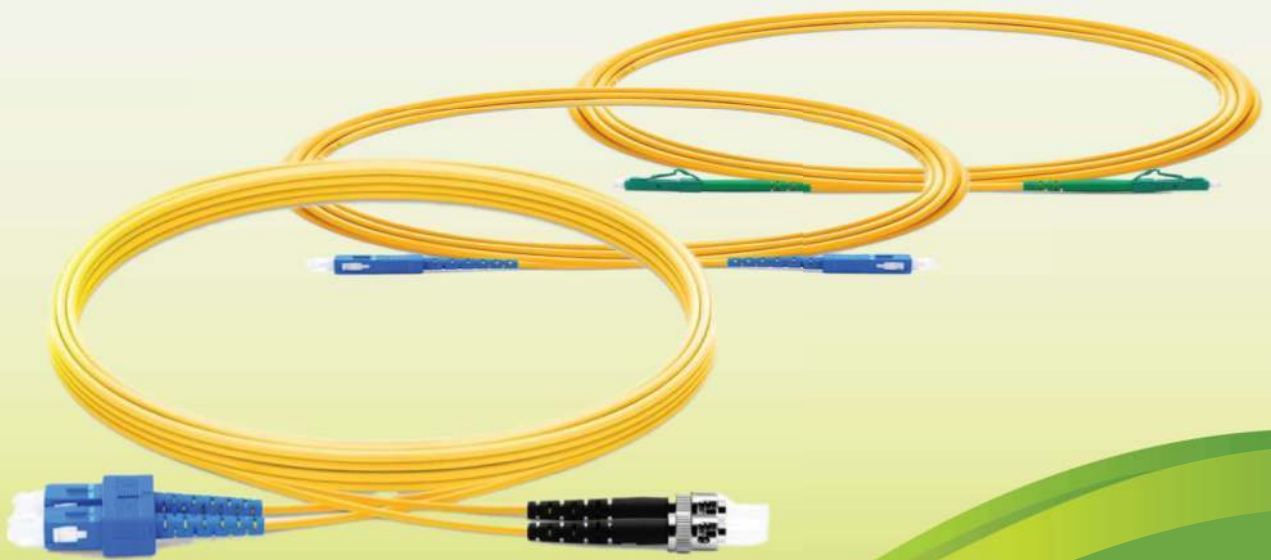
- ⇒ 2X32 LC/APC SM RACK MOUNT SPLITTER



TMT GLOBAL SC/APC SPLITTERS SERIES



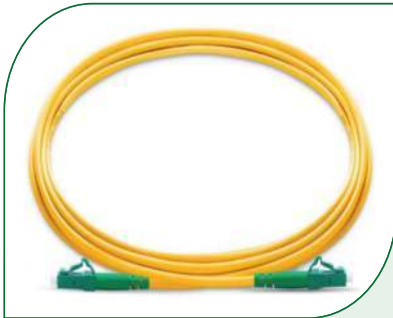
FIBER OPTICS SINGLE MODE PATCH CORD/PIGTAILS SERIES



TMT GLOBAL FIBER OPTICS SINGLE MODE PATCH CORD/PIGTAILS SERIES



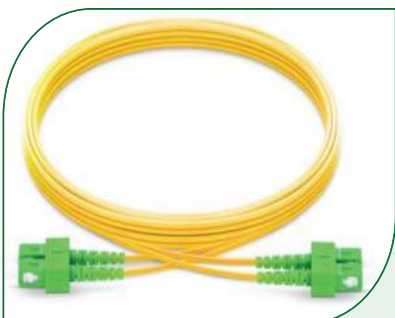
(1, 2, 3, 5, 10, 15, 20, 25, 30) M
SINGLE MODE SC-SC/APC
SIMPLEX FIBER OPTIC PATCH
CORD LSZH



(1, 2, 3, 5, 10, 15, 20, 25, 30) M
SINGLE MODE LC-LC/APC
SIMPLEX FIBER OPTIC PATCH
CORD LSZH



(1, 2, 3, 5, 10, 15, 20, 25, 30) M
SINGLE MODE SC-LC/APC
SIMPLEX FIBER OPTIC PATCH
CORD LSZH



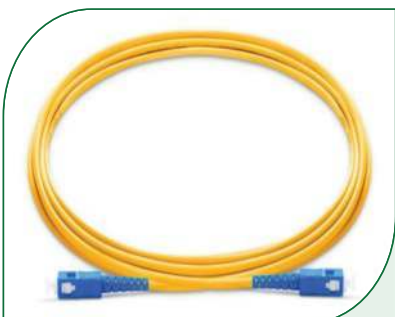
(1, 2, 3, 5, 10, 15, 20, 25, 30) M
SINGLE MODE SC-SC/APC
DUPLEX FIBER OPTIC PATCH
CORD LSZH



(1, 2, 3, 5, 10, 15, 20, 25, 30) M
SINGLE MODE LC-LC/APC
DUPLEX FIBER OPTIC PATCH
CORD LSZH



(1, 2, 3, 5, 10, 15, 20, 25, 30) M
SINGLE MODE SC-LC/APC
DUPLEX FIBER OPTIC PATCH
CORD LSZH



(1, 2, 3, 5, 10, 15, 20, 25, 30) M
SINGLE MODE SC-SC/UPC
SIMPLEX FIBER OPTIC PATCH
CORD LSZH

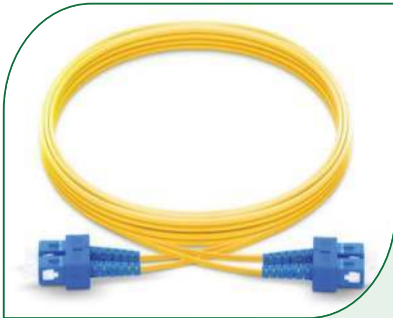


(1, 2, 3, 5, 10, 15, 20, 25, 30) M
SINGLE MODE LC-LC/UPC
SIMPLEX FIBER OPTIC PATCH
CORD LSZH

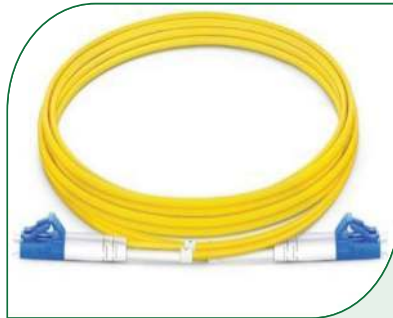


(1, 2, 3, 5, 10, 15, 20, 25, 30) M
SINGLE MODE SC-LC/UPC
SIMPLEX FIBER OPTIC PATCH
CORD LSZH

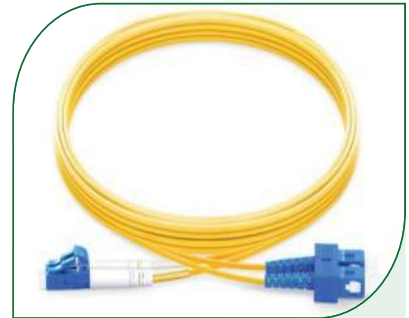
TMT GLOBAL FIBER OPTICS SINGLE MODE PATCH CORD/PIGTAILS SERIES



(1, 2, 3, 5, 10, 15, 20, 25, 30) M
SINGLE MODE SC-SC/UPC
DUPLEX FIBER OPTIC PATCH
CORD LSZH



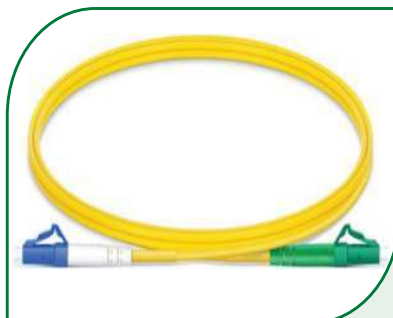
(1, 2, 3, 5, 10, 15, 20, 25, 30) M
SINGLE MODE LC-LC/UPC
DUPLEX FIBER OPTIC PATCH
CORD LSZH



1, 2, 3, 5, 10, 15, 20, 25, 30) M
SINGLE MODE SC-LC/UPC
DUPLEX FIBER OPTIC PATCH
CORD LSZH



(1, 2, 3, 5, 10, 15, 20, 25, 30) M
SINGLE MODE SC/APC - SC/UPC
SIMPLEX FIBER OPTIC PATCH C
CORD LSZH



(1, 2, 3, 5, 10, 15, 20, 25, 30) M
SINGLE MODE LC/APC- LC/UPC
SIMPLEX FIBER OPTIC PATCH
CORD LSZH



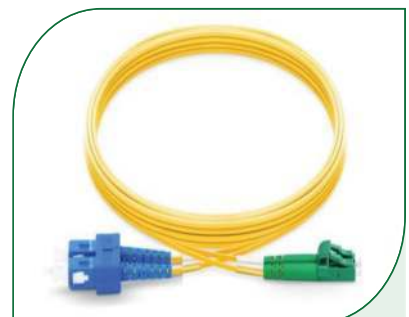
(1, 2, 3, 5, 10, 15, 20, 25, 30) M
SINGLE MODE SC/APC - LC/UPC
DUPLEX FIBER OPTIC PATCH
CORD LSZH



(1, 2, 3, 5, 10, 15, 20, 25, 30) M
SINGLE MODE LC/APC - LC/UPC
DUPLEX FIBER OPTIC PATCH
CORD LSZH



(1, 2, 3, 5, 10, 15, 20, 25, 30) M
SINGLE MODE LC/UPC - SC/APC
DUPLEX FIBER OPTIC PATCH
CORD LSZH



(1, 2, 3, 5, 10, 15, 20, 25, 30) M
SINGLE MODE LC/APC - SC/UPC
DUPLEX FIBER OPTIC PATCH
CORD LSZH

TMT GLOBAL FIBER OPTICS SINGLE MODE PATCH CORD/PIGTAILS SERIES



(1, 2, 3, 5, 10, 15, 20, 25, 30) M
SINGLE MODE LC-ST/UPC
DUPLEX FIBER OPTIC PATCH
CORD LSZH



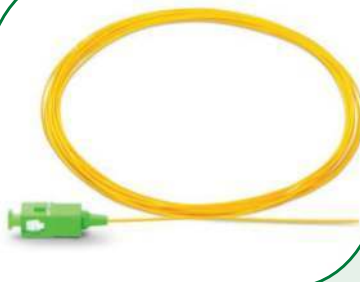
(1, 2, 3, 5, 10, 15, 20, 25, 30) M
SINGLE MODE SC-ST/UPC
DUPLEX FIBER OPTIC PATCH
CORD LSZH



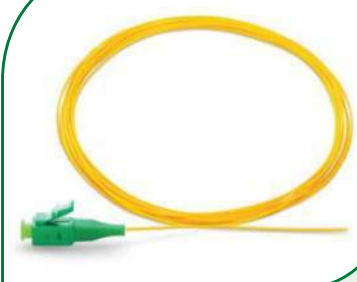
(1, 2, 3, 5, 10, 15, 20, 25, 30) M
SINGLE MODE ST ST/UPC
SIMPLEX FIBER OPTIC PATCH
CORD LSZH



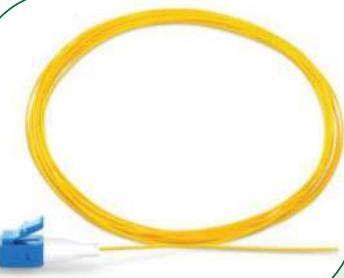
(1, 2, 3, 5, 10, 15, 20, 25, 30) M
SINGLE MODE ST-ST/UPC
DUPLEX FIBER OPTIC PATCH
CORD LSZH



1M SINGLE MODE SC/APC FIBER
OPTIC
PIGTAIL LSZH



1M SINGLE MODE LC/APC FIBER
OPTIC
PIGTAIL LSZH



1M SINGLE MODE LC/UPC FIBER
OPTIC
PIGTAIL LSZH



1M SINGLE MODE ST FIBER
OPTIC PIGTAIL
LSZH

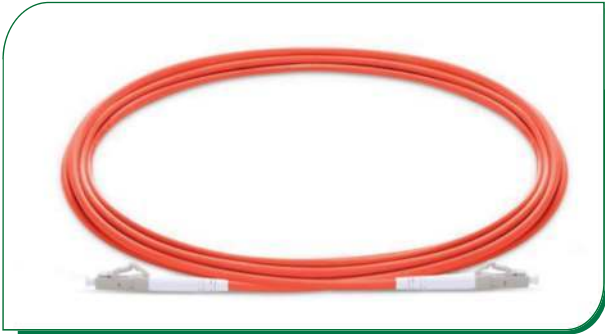


1M SINGLE MODE SC/UPC FIBER
OPTIC
PIGTAIL LSZH

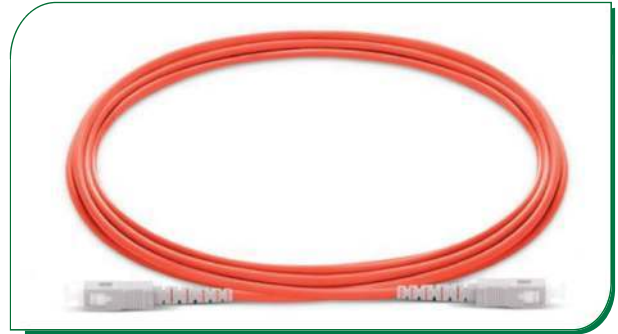
FIBER OPTICS MULTI MODE PATCH CORD/PIGTAILS SERIES



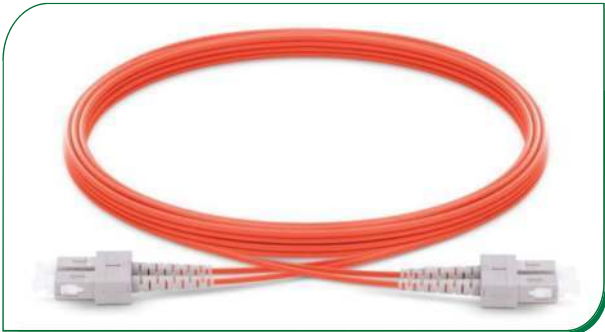
TMT GLOBAL FIBER OPTICS MULTI MODE PATCH CORD/PIGTAILS SERIES



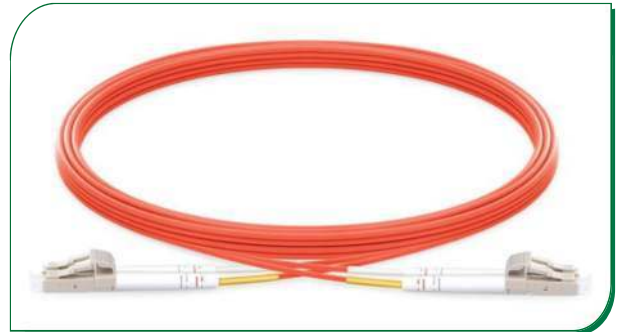
(1,2,3,5,10,15,20,25,30) M MULTI MODE LC-LC/UPC
SIMPLEX FIBER OPTIC PATCH CORD LSZH OM2



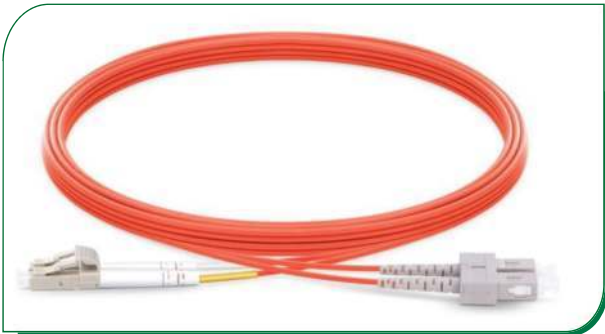
(1,2,3,5,10,15,20,25,30) M MULTI MODE SC-SC/UPC
SIMPLEX FIBER OPTIC PATCH CORD LSZH OM2



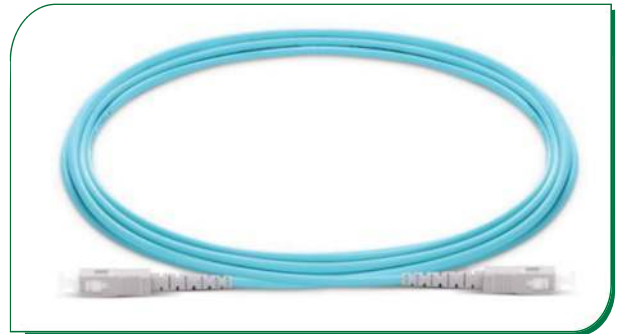
(1,2,3,5,10,15,20,25,30) M MULTI MODE SC-SC/UPC
DUPLEX FIBER OPTIC PATCH CORD LSZH OM2



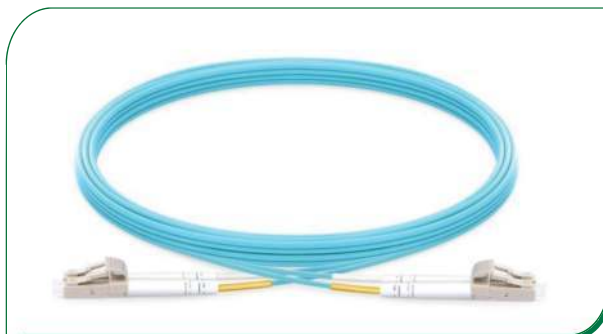
1,2,3,5,10,15,20,25,30) M MULTI MODE LC-LC/UPC
DUPLEX FIBER OPTIC PATCH CORD LSZH OM2



(1,2,3,5,10,15,20,25,30) M MULTI MODE SC-LC/UPC
DUPLEX FIBER OPTIC PATCH CORD LSZH OM2

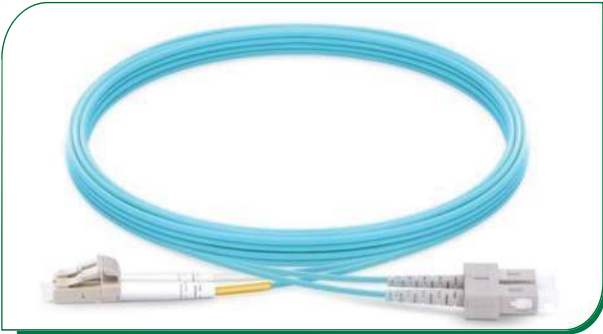


(1,2,3,5,10,15,20,25,30) M MULTI MODE SC-SC/UPC
SIMPLEX FIBER OPTIC PATCH CORD LSZH OM3

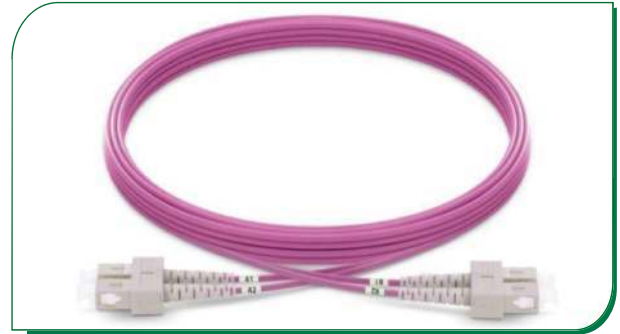


(1,2,3,5,10,15,20,25,30) M MULTI MODE
LC-LC/UPC DUPLEX FIBER OPTIC
PATCH CORD LSZH OM3

TMT GLOBAL FIBER OPTICS MULTI MODE PATCH CORD/PIGTAILS SERIES



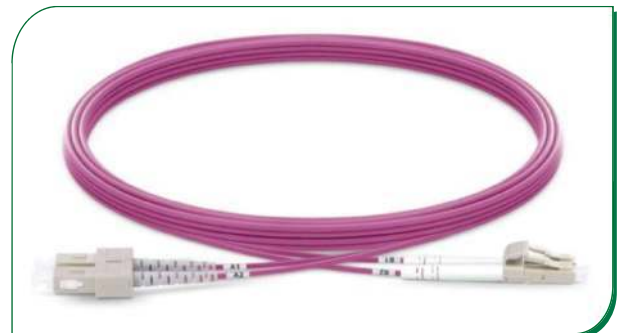
**(1,2,3,5,10,15,20,25,30) M MULTI MODE SC-LC/UPC
DUPLEX FIBER OPTIC PATCH CORD LSZH OM3**



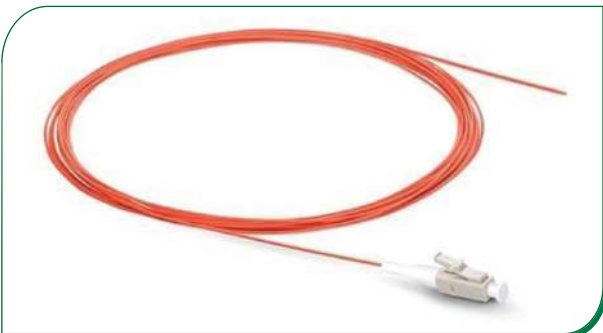
**(1,2,3,5,10,15,20,25,30) M MULTI MODE SC-SC/UPC
DUPLEX FIBER OPTIC PATCH CORD LSZH OM4**



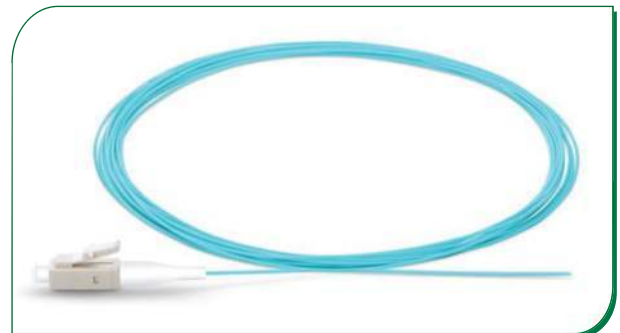
**(1,2,3,5,10,15,20,25,30) M MULTI MODE LC-LC/UPC
DUPLEX FIBER OPTIC PATCH CORD LSZH OM4**



**(1,2,3,5,10,15,20,25,30) M MULTI MODE SC-LC/UPC
DUPLEX FIBER OPTIC PATCH CORD LSZH OM4**



**1M MULTI MODE SC FIBER OPTIC PIGTAIL LSZH
OM2**



**1M MULTI MODE SC FIBER OPTIC PIGTAIL LSZH
OM3**

**1M MULTI MODE SC FIBER OPTIC
PIGTAIL LSZH OM4**



CABINET/RACK SERIES



TMT GLOBAL CABINET/RACK SERIES



6U FLUSH, WALL MOUNTED CABINET

- ▶ 6U 450X120 MM WALL MOUNTED CABINET
- ▶ 6U 450X120 MM FLUSH MOUNTED CABINET

9U FLUSH, WALL MOUNTED CABINET

- ▶ 9U 500X120 MM FLUSH MOUNTED CABINET
- ▶ 9U 500X120 MM WALL MOUNTED CABINET
- ▶ 9U 450X120 MM FLUSH MOUNTED CABINET
- ▶ 9U 600X120 MM FLUSH MOUNTED CABINET



12U FLUSH, WALL MOUNTED CABINET

- ▶ 12U 400X120 MM FLUSH MOUNTED CABINET
- ▶ 12U 600X120C MM FLUSH MOUNTED CABINET
- ▶ 12U 450X150 MM FLUSH MOUNTED CABINET
- ▶ 12U 450X150 MM WALL MOUNTED CABINET
- ▶ 12U 600X150 MM FLUSH MOUNTED CABINET
- ▶ 12U 600X150CM WALL MOUNTED CABINET
- ▶ 12U 600X300 MM FLUSH MOUNTED CABINET
- ▶ 12U 600X300 MM WALL MOUNTED CABINET

15U WALL, FLOOR STANDING CABINET

- ▶ 15U 600X600 MM FLOOR MOUNTED CABINET
- ▶ 15U 600X600 MM WALL MOUNTED CABINET
- ▶ 15U 600X450 MM WALL MOUNTED CABINET



TMT GLOBAL CABINET/RACK SERIES



18U WALL, FLOOR STANDING CABINET

- ▶ 18U 600X600 MM FLOOR MOUNTED CABINET
- ▶ 18U 600X600 MM WALL MOUNTED CABINET
- ▶ 18U 600X800 MM FLOOR MOUNTED CABINET



22-32U FLOOR STANDING CABINET

- ▶ 22U 800X800 MM FLOOR MOUNTED CABINET
- ▶ 22U 800X600X MM FLOOR STANDING CABINET
- ▶ 27U 600X600 MM FLOOR STANDING CABINET
- ▶ 27U 600X600 MM FLOOR STANDING CABINET
- ▶ 32U 600X600 MM FLOOR STANDING CABINET

42-47 U FLOOR STANDING CABINET

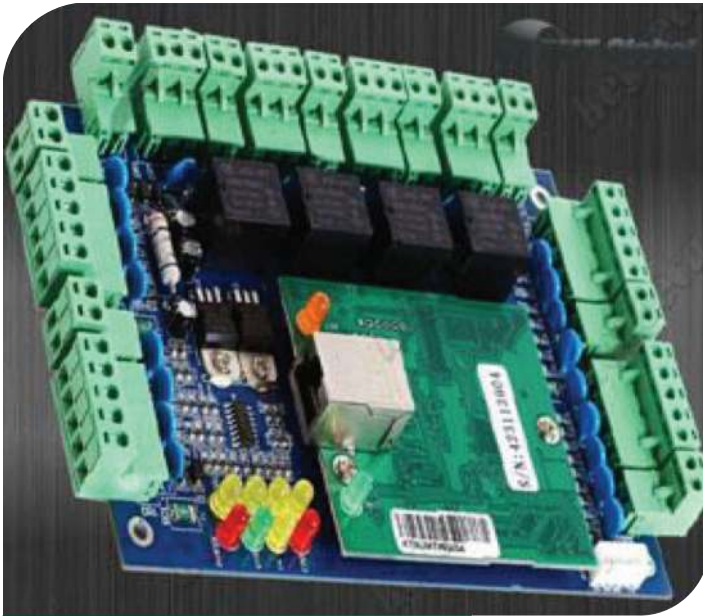
- ▶ 42U 800X800 MM FLOOR STANDING CABINETS
- ▶ 42U 600X800 MM FLOOR STANDING CABINETS
- ▶ 42U 600X600 MM FLOOR STANDING CABINETS
- ▶ 47U 1000X800 MM FLOOR STANDING CABINET



ACCESS CONTROL SYSTEM



TMT GLOBAL ACCESS CONTROL SYSTEM



1,2,4 Door Access Control System



Power Supply Box With Built in Power Supply (Back up Battery Optional)

Specification

Communication	TCP/IP 10M/100M adaptive
Input Format of Reader	Wigand 26 (All card reader with compatible protocol, such as Motorola , HID, EM , Mifare one etc.)
Door opening time extending setting	1-600 seconds (adjustable)
Door Controlled	1,2,4
Max Qty of controller	No limit
Qty of Event Buffers (offline)	100,000 event buffers
Max Distance from Reader to Controller	100m (suggestion distance 80m)
Compulsive open and close door at long time	Yes
Inter block	Yes
Multi-card open door	Yes
Electronic map	Yes
First card unlocking	Yes
Keypad (card + password, supper password)	Yes
Alarm for long time door open	Yes
Operation Temperature	minus 40°C-70°C
Power Supply	12VDC 4-7A
Power Consumption of Circuit Board	Less than 100mA

ORDER INFORMATION

Model No	Product ID	Description
TMT-7601	TMT-3NXXXX1	1DOOR ACCESS CONTOLLER
TMT-7602	TMT-3NXXXX2	2DOOR ACCESS CONTOLLER
TMT-7604	TMT-3NXXXX4	4DOOR ACCESS CONTOLLER

TMT GLOBAL ACCESS CONTROL SYSTEM

TMT GLOBAL STAND ALONE WATER PROOF ACCESS CONTROL

Specification

Card type	NL
Waterproof degree	IP68
Environment Humidity	10%~90%
Lock output	≤3A
Working voltage	DC12-24V ±10%
Static electricity	≤30mA
Alarm output	≤20A
Output short circuit protection time	100μS
Card read distance	2~5cm
Ambient temperature	-45 ~60
Door Opening Time	0~99s (Adjustable)
Metal structure design	anti-vandal Digital backlit keyboard
All-in-one	WG26 output/input
User capacity	2000 card user card, 2000 user password
Access Way	card, password, card + password
The doorbell button and interface	buttons and isolation circuit Connect to any external bell
Dimension	120x80x25mm



ORDER INFORMATION

Model No	Product ID	Description
TMT-7610	TMT-1S110311	STAND ALONE ACCESS CONTROL WATER PROOF IP68

Specification

Card type	NL
Waterproof degree	IP68
Environment Humidity	10%~90%
Lock output	≤3A
Working voltage	DC12-24V ±10%
Static electricity	≤30mA
Alarm output	≤20A
Output short circuit protection time	100μS
Card read distance	2~5cm
Ambient temperature	-45 ~60
Door Opening Time	0~99s (Adjustable)
Metal structure design	anti-vandal Digital backlit keyboard
All-in-one	WG26 output/input
User capacity	2000 card user card, 2000 user password
Access Way	card, password, card + password
The doorbell button and interface	buttons and isolation circuit Connect to any external bell
Dimension	120x75x25mm



ORDER INFORMATION

Model No	Product ID	Description
TMT-7612	TMT-1S110511	STAND ALONE ACCESS CONTROL WATER PROOF IP68

TMT GLOBAL ACCESS CONTROL SYSTEM

Specification

Read Range	EM: Up to 10CM, MF:Up to 5CM
Reading Time (Card)	≤300ms
Power / Current	DC 6-14V / Max.70mA
Input Port	2ea (External LED Control, External Buzzer Control)
Output Format	EM ,26bit/ MF, 34bit Wigand (default)
LED Indicator	2 Colour LED Indicators(Red and Green)
Beeper	Yes
Operating Temperature	-20° to +65°C
Operating Humidity	10% to 90% relative humidity non-condensing
Color	Black
Dimension(W x H x T)mm	80 x 43x 16mm
Weight	50g
Index of Protection	IP68



TMT Global Access Control RFID Reader

ORDER INFORMATION

Model No	Product ID	Description
TMT-7623	TMT-2S1X3531	EM CARD READER
TMT-7624	TMT-2S2X3531	MF CARD READER



DOOR EXIT PUSH BUTTON



DOOR EXIT PUSH BUTTON

Specification

Material	Aluminum Panel, Steel Button
Voltage	DC12V
Current	10mA
Mechanical Life	1000000 tested
Current Rating	Current Rating
Output	GND NO NC COM
Dimension	86 x86x38mm
Weight	0.15kg

Specification

Dimensions	86Lx86Wx50H(mm)
Standard Structure	Fireproof Material, Easy to install
Current Rating	3A 36VDC Max
Output Contact	NO\NC\COM
Suitable for Door	Exit Door, Emergence Door
Operating temp	-10 ~ 55°C (14°F-131°F)
Operating Humidity	0-95% (non- condensing)
Material Selection	Fireproof Material, Sandblast Finished
Weight	0.136k



UHF LONG RANGE READERS SERIES



TMT GLOBAL UHF LONG RANGE READERS SERIES

Functions

- ▶ UHF (860-868MHz) band, equipped with 12 DBI antenna
- ▶ Support standard RS-232, Wiegand interface
- ▶ Order-trigger, set time-trigger and out-trigger suitable for customer's applications
- ▶ Upgrade firmware by serial port online
- ▶ Strong API user interface

Applications

- ▶ Vehicle parking, intelligent weighing
- ▶ Warehouse, logistics management
- ▶ Asset management
- ▶ Production line management



TMT Global long range Integrated Reader widely applied in intelligent transportation, customs access management, warehouse logistics.

Specification

Performance Index	
Operating Frequency	860-868MHz, RF band customized (optional)
Frequency Hopping	FHSS or Fixed Frequency
Power Output	+20dBm ~ +30dBm@50Ω load, 1dBm each step
Antenna	Built-in 12dBi linear polarization antenna (horizontal/vertical customized)
Communication Interfaces	RS-232, Wiegand 26/34
Optional Interfaces	RS-485, 802.11 WIFI Module and 10M/100M Ethernet interfaces
I/O Interfaces	2-channel Relay Output, 2-channel Trigger Input, 2-channel level Output (optional)
Firmware Update	Firmware Upgrade
Application Software Platform	API(C++, C#) development kit (can be customized)
Tag Operation	
Tag Protocol	ISO18000-6B, EPC Class 1 Gen 2(ISO18000-6C)
Reading Range	0~15m
Writing Range	0~5m
Mechanical/Electric Performance	
IP Rating	IP66
Indicator	Buzzer and LED(Power, Antenna, Reading/Writing)
Power	DC 12V
Power Assumption	2W(Standby), 10W(Working)
Product Dimension	445mm x 445mm x 78mm (LxWxH)
Package Dimension	600mm x 500mm x 110mm (LxWxH)
Net Weight	3.5kg
Gross Weight	6.23kg
Operating Temperature	-40°C ~ +60°C
Storage Temperature	-60°C ~ +80°C
Humidity	Humidity 5%~ 95%(non-condensing)

ORDER INFORMATION

Model No	Description
TMT-7641	LONG RANGE UHF READER UP TO 15M RANGE



TMT GLOBAL UHF LONG RANGE READERS SERIES



EM, RFID card 125khz



EM + UHF Dual Frequency Card



UHF CARD



Milfare Card



MF+UHF Dual Frequency Card

Specification

Product name	UHF CARD
Frequency	868Mhz~915Mhz
Material	PVC
Size	86*54*0.86mm
Surface Finishing	Glossy, Matt or Frosted Anti Scratch
Standard	ISO/IEC 14443
Craft	Serial Number

Specification

Product name	UHF Windshield Sticker
Frequency	860Mhz~868Mhz
Material	PVC
Size	86*54*0.86mm
Surface Finishing	Glossy, Matt or Frosted Anti Scratch
Standard	ISO/IEC 14443
Craft	Serial Number



UHF Windshield Sticker



MAGNETIC SINGLE DOOR LOCK SERIES



TMT GLOBAL MAGNETIC SINGLE DOOR LOCK SERIES

TMT-7646



280KG SINGLE DOOR MAGNETIC DOOR LOCK

TMT-7649



280KG DOUBLE DOOR MAGNETIC LOCK

TMT-7654



Z/L BRACKET FOR MAGNETIC LOCKS

TMT-7653



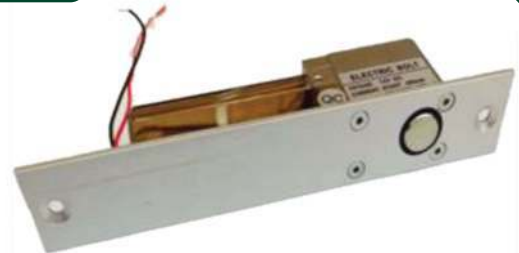
Z/L BRACKET FOR MAGNETIC LOCKS

TMT-7655



U BRACKET FOR GLASS

TMT-7664



ELECTRIC BOLT LOCK

TMT-7667



ELECTRIC STRIKE LOCK

TMT-7665



ELECTRIC BOLT GLASS LOCK

LIGHTING CONTROL SYSTEM



LIGHTING CONTROL SYSTEM



TMT-7501

TMT Global PIR motion sensor

TMT Global Microwave Motion sensor product is a new saving-energy switch; it adopts microwave sensor mould with high-frequency electro-magnetic wave (5.8GHz) and integrated circuit. It gathers automatism, convenience, safety, saving-energy and practical functions. The wide detection field depends on detectors. It works by receiving human motion. When one enters the detection field, it can start the load at once and identify automatically day and night. Its installation is very convenient and its using is very wide. Detection is possible to go through doors, panes of glass or thin walls.



TMT-7512



TMT-7530

SPECIFICATIONS

Name	PIR Motion Sensor
Power Source	220-240V/AC50Hz
Time setting	10Sec-15Min.(adjustable)
Detection range	3-12m
Rated Load	1200W Max (220-240V/AC)
Ambient Light	<10Lux~2000 Lux (adjustable)
Transmission Power	<10Mw
Power Frequency	50/60Hz
Detection angle	360° (ceiling installation) 180° Wall Mounted
Installation height	1.8-3m
Working temperature	10C+60C
Detection motion speed	0.6-1.5m/s
Standby Power	working 0.45W (static 0.1W)
IP Range	IP 44

APPLICATIONS

- ▶ OFFICE, CABINS,
- ▶ CONFERENCE HALLS / MEETING ROOMS
- ▶ TRAIL ROOMS/ STORE ROOMS
- ▶ CORRIDORS / BASEMENTS
- ▶ LIFTS / ATM
- ▶ AND MANY MORE!!

FEATURES

- ▶ MICROWAVE BASED MOTION SENSOR
- ▶ SURFACE MOUNT
- ▶ LUX , TIME & SENSITIVITY ADJUST ABLE
- ▶ 3-12M DETECTING RANGE
- ▶ 360° DETECTION ANGLE
- ▶ 10-60C WORKING TEMPRATURE

GATE AUTOMATION SYSTEM



GATE AUTOMATION SYSTEM



TMT-7781



TMT-7787-4



TMT-7783



TMT-7786



TMT-7796



TMT-7760

TMT Global automatic door wireless RF remote control 2,4 buttons are very easy and convenient used for home/store burglar alarm, electric cars, motorcycles, automobile ,car alarms, all kind of doors/windows controllers, LED and other industrial control

TECHNICAL PARAMETERS

Working voltage	DC12V
Working current	$\leq 12\text{mA}$
Working frequency	286MHz-868MHz
Transmit power	$\geq 10\text{mW}$
Transmission Speed	50-60KH
Frequency Wind age	$\pm 0.2\text{MHz}$
Transmission distance	100 meters (Open space)
Chip and Operating mode	Rolling code

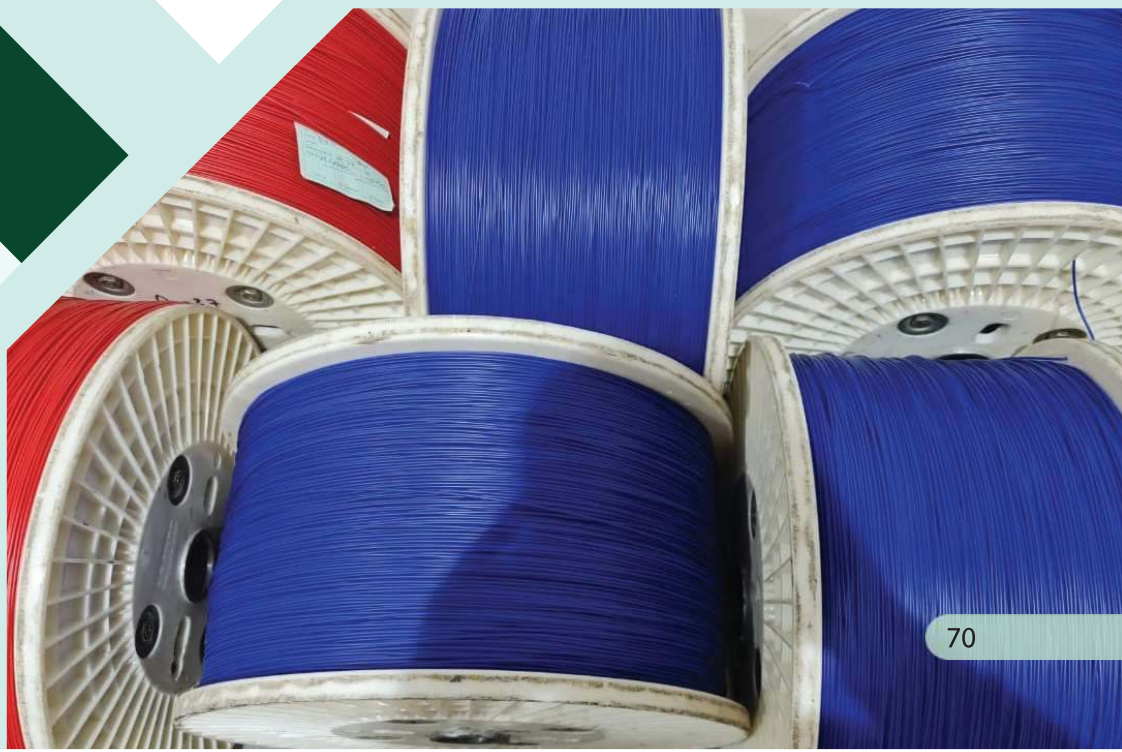


TMT-7776



TMT-7767

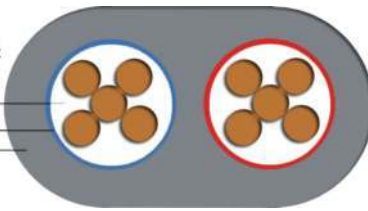
ELV/SECURITY/ ALARM/SPEAKER CABLE SERIES



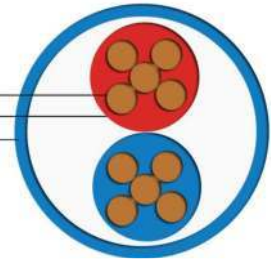
ELV/SECURITY/ALARM/SPEAKER CABLE SERIES

FLAT ELV/POWER CABLE SERIES

- COPPER CONDUCTOR
- INNER JACKET
- OUTER JACKET

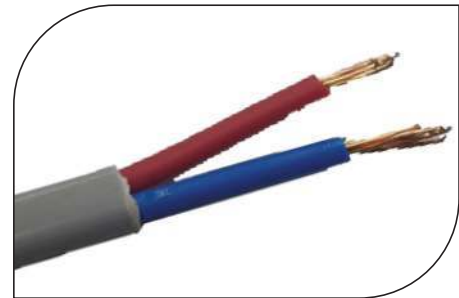


- CONDUCTOR
- INNER JACKET
- OUTER JACKET

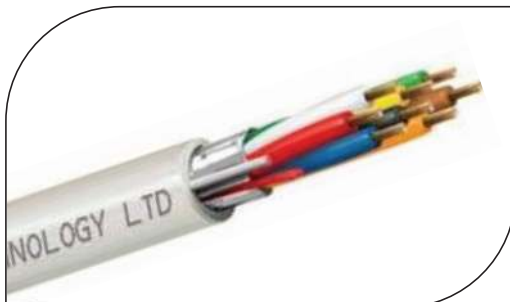


Specification Summary

Basic Conductor	(Bare Copper) / (TMT copper)
Cable Type	RVV Power Cable
Conductor Size	1.5mm ² - 2C-7/0.52 mm
Standard Jacket Color	Grey /Blue
Standard Packing	305M / Wooden /Plastic Drum



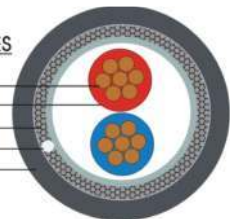
ELV/POWER CABLE



SECURITY/ ALARM CABLE

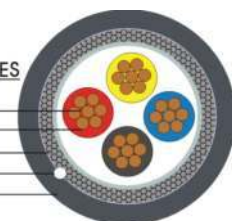
2CORE SECURITY/ALARM CABLE SERIES

- COPPER CONDUCTOR
- INNER JACKET
- OVER ALL BRAIDING
- RIP CORD
- OUTER JACKET



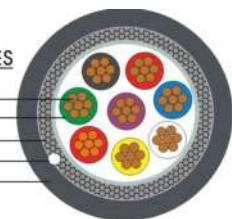
4CORE SECURITY/ALARM CABLE SERIES

- COPPER CONDUCTOR
- INNER JACKET
- OVER ALL BRAIDING
- RIP CORD
- OUTER JACKET



8CORE SECURITY/ALARM CABLE SERIES

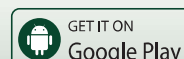
- COPPER CONDUCTOR
- INNER JACKET
- OVER ALL BRAIDING
- RIP CORD
- OUTER JACKET



Specification Summary

Basic Conductor	1.0, 1.13mm (Bare Copper) / (TMT copper)
Cable Type	Security Alarm Cable 2, 4, 8 Core
Conductor Size	8*(7*0.22 mm) / (4*7*0.22 mm) / (2*7*0.22 mm)
Standard Jacket Color	Grey /Blue
Standard Packing	305M / Wooden /Plastic Drum

CCTV SYSTEM



CCTV SYSTEM



TMT Global 4/8/16/24/36
64ch NVR Series With Embedded Linux
Full HD Network Backup USB Hard Disk 4K/8MP
2U 9HDD H.265 NVR

Features

- ▶ H.265 64CH 4K/8MP 2U 9 HDD NVR
- ▶ Support TMTEYE P2P cloud services
- ▶ Provide networked centralized monitoring and management software
- ▶ Support H.265+/H.265/H.264 coding front end adaptive access
- ▶ Support ONVIF, High profile S and High profile G

Product Highlights

- ▶ Supports 16HDD, supports hard disk hot swap, and supports RAID5.
- ▶ Support Slink super protocol, plug and play. Subverting tradition, IPC does not require IP
- ▶ Connect to network cameras that comply with ONVIF, RTSP standards and many mainstream manufacturers
- ▶ Supports ONVIF external channel and can directly interface with international standard ONVIF protocol platform.
- ▶ Support GB28181 standard communication protocol
- ▶ Support preview, storage and playback of 4K HD network video
- ▶ Support H.265, H.264 encoding front-end adaptive access
- ▶ New UI operation interface, support one-click to open recording function
- ▶ Support IPC centralized management, including IPC parameter configuration, information import/export, voice intercom and upgrade, etc.
- ▶ Support double password verification playback and backup
- ▶ Supports instant playback under the preview screen without affecting other channel previews
- ▶ Supports up to 16 channels of 1080p synchronous playback and multi-channel synchronous playback
- ▶ Support image multi-channel playback and support thumbnail playback
- ▶ Supports ultra-high speed playback of 4,8,16,32, 64, etc.



TMT GLOBAL 2MP Auto Focus IP Camera
motorized lens 2.8-12mm Auto focus Bullet Camera

Features

- ▶ Embedded Linux System
- ▶ H.264,H.265 Video Compression
- ▶ Full HD Resolution 1920*1080
- ▶ Motorized Lens (Auto Focus) 2-12mm
- ▶ IP66 Rating indoor/outdoor



Features

- ▶ Embedded Linux System
- ▶ H.264,H.265 Video Compression,
- ▶ Full HD Resolution 1920*1080
- ▶ Motorized Lens (Auto Focus) 2-12mm
- ▶ IP66 Rating indoor/outdoor

TMT GLOBAL 2 MP Auto Focus IP Dome Camera
motorized lens 2.8-12mm Lens ,Auto focus

SOME OF OUR PROJECTS



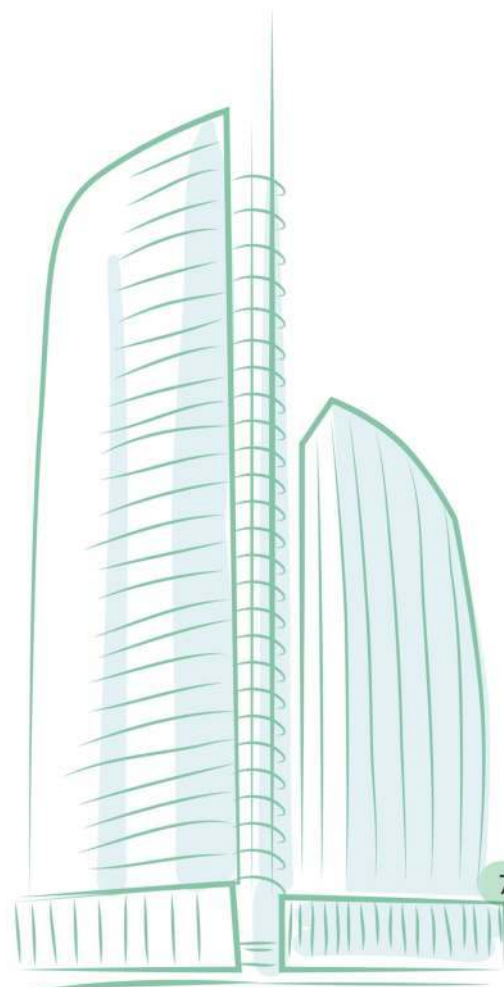
SOME OF OUR PROJECTS

- ▶ TMT-SCS-79001 G+M+2 RESED/COMMERCIAL BLDG
- ▶ TMT-SCS-79002 G+M+1 RESED/COMMERCIAL BLDG
- ▶ TMT-SCS-79003 G+M+1 RESED/COMMERCIAL BLDG
- ▶ TMT-SCS-79004 G+M+1 RESED/COMMERCIAL BLDG
- ▶ TMT-SCS-79005 G+M+1 RESED/COMMERCIAL BLDG
- ▶ TMT-SCS-79006 ANNEX LAB
- ▶ TMT-SCS-79007 G+1+M+R RESED/COMMERCIAL BLDG
- ▶ TMT-SCS-79008 G+M SHED WARE HOUSE
- ▶ TMT-SCS-79009 G+2TYP+ROOF
- ▶ TMT-SCS-79011 Vantage Tower
- ▶ TMT-SCS-79012 G+B+7TYP AL RAFAA
- ▶ TMT-SCS-79013 G+1 3 VILLAS
- ▶ TMT-SCS-79014 G+1 ACCOMODATION AJMAN
- ▶ TMT-SCS-79015 G+4 AL MURAR
- ▶ TMT-SCS-79016 2B+G+5TYP+ROOF
- ▶ TMT-SCS-79017 B+G+7+R RED BLDG INT CITY
- ▶ TMT-SCS-79018 G+M INDUSTRIAL BLDG
- ▶ TMT-SCS-79019 G+3 RESD/ Commercial building
- ▶ TMT-SCS-79020 G+3P+13F +HEALTH CLUB
- ▶ TMT-SCS-79021 B+2P+G+9+R+Gym Building.
- ▶ TMT-SCS-79022 G+6 SATWA 2 BLDG
- ▶ TMT-SCS-79023 G+8 SATWA 2 BLDG
- ▶ TMT-SCS-79024 2B+G+2P+14F+POOL
- ▶ TMT-SCS-79025 UG+G+2P+7TYP+PH RESD
- ▶ TMT-SCS-79026 G+4 RESEDENCIAL BLDG
- ▶ TMT-SCS-79027 G+4 RESEDENCIAL BLDG
- ▶ TMT-SCS-79028 2B+G+9+1HC
- ▶ TMT-SCS-79029 EMARATECH STAFF ACCOMODATION
- ▶ TMT-SCS-79030 G+3P+13F +HEALTH CLUB
- ▶ TMT-SCS-79032 G+2P+12F RESD BLDG
- ▶ TMT-SCS-79033 500 Villas in Living Legend (AL BARARI)
- ▶ TMT-SCS-79034 THE PAD BY (OMNIYAT)
- ▶ TMT-SCS-79035 RESIDENTIAL BUILDING (2B+G+9TYP+HC)
- ▶ TMT-SCS-79036 B+G+7+ROOF
- ▶ TMT-SCS-79037 B+G+8+R COMMECIAL BLDG (SATWA)
- ▶ TMT-SCS-79038 B+G+8+R COMMECIAL BLDG (SATWA)
- ▶ TMT-SCS-79039 4B+G+14TYP RED BLDG (AL MULLA PLAZA)
- ▶ TMT-SCS-79040 2B+G+9 FIVE STAR HOTEL



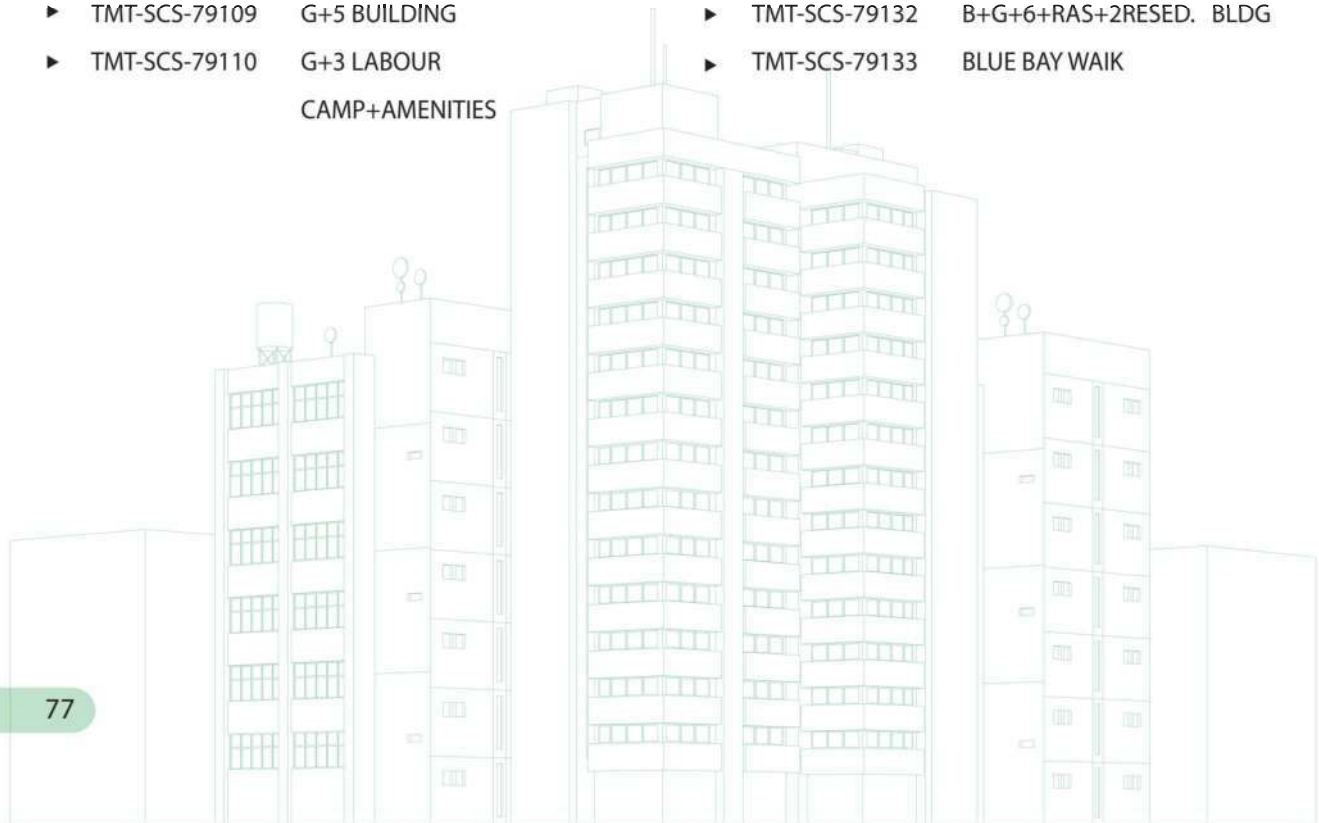
SOME OF OUR PROJECTS

- ▶ TMT-SCS-79041 B+G+6+R+UR RESED.
- ▶ TMT-SCS-79042 UG+G+M+3F+LR+TR AL RIQQA
- ▶ TMT-SCS-79043 G+M+3+ROOF
- ▶ TMT-SCS-79044 2B+G+13F+GYM BLDG DUBAI LAND
- ▶ TMT-SCS-79045 G+15 AJMAN BUILDING
- ▶ TMT-SCS-79046 G+M+3+R
- ▶ TMT-SCS-79047 G+4 LABOUR ACCOMMODATION
- ▶ TMT-SCS-79048 TOWN HOUSES
- ▶ TMT-SCS-79049 2B+G+8- RESIDENTIAL BLDG
- ▶ TMT-SCS-79050 Apartment Hotel (2B+G+1st-7th+
8th-17th+R)
- ▶ TMT-SCS-79051 2B+G+12+GYM
- ▶ TMT-SCS-79052 1B+G+5F+GYM
- ▶ TMT-SCS-79053 22 BUILDING LIWAN
- ▶ TMT-SCS-79054 G+2 on Plot No. 127-1917 (Hor Al Anz)
- ▶ TMT-SCS-79055 G+2 on Plot No. 116-0417 (Ayal Nasir)
- ▶ TMT-SCS-79056 B+G+2+ROOF SATWA
- ▶ TMT-SCS-79057 B+G+3TYP+4Floor+Roof
- ▶ TMT-SCS-79058 2B+G+M+3Typ Hotel - Garhoud
- ▶ TMT-SCS-79059 G+2P+10TYP+GYM
- ▶ TMT-SCS-79060 2B+G+3P+19F COMM. &
RESEDENCIAL BLDG
- ▶ TMT-SCS-79061 B+G+M+3F COMMERCIAL AND
RESIDENTIAL BLDG
- ▶ TMT-SCS-79062 UG+G+4P+14F+R RESD. COMM.
- ▶ TMT-SCS-79063 G+7 HOTEL APARTMENT
- ▶ TMT-SCS-79064 G+M+1+ROOF
- ▶ TMT-SCS-79065 G+M+2+R Hotel Building
- ▶ TMT-SCS-79066 G+2 OFFICE BLDG
- ▶ TMT-SCS-79067 B+G+1+R COMMERCIAL BLDG
- ▶ TMT-SCS-79068 G+3P+19+R FLOORS -
- ▶ TMT-SCS-79069 EMAAR PARKSIDE1 PLOT GC-03
- ▶ TMT-SCS-79070 G+1 108 VILLAS AZELEA VILLAS
- ▶ TMT-SCS-79071 ARABIAN RANCHES ASEEL
CONSTRUCTION 55 VILLA
- ▶ TMT-SCS-79072 236 VILLA Stacked Townhouses
PLOT-GA-05
- ▶ TMT-SCS-79073 G+3 RESD/ Commercial BLDG
- ▶ TMT-SCS-79074 150 CLUB VILLA
- ▶ TMT-SCS-79075 371 PARKSIDE VILLAS
- ▶ TMT-SCS-79077 The Terrace
- ▶ TMT-SCS-79078 G+2P+9F, IMPZ NASIR BLDG
- ▶ TMT-SCS-79079 G+2P+9F, IMPZ ZAKI BLDG
- ▶ TMT-SCS-79080 G+2P+9F,IMPZ JAMAL BLDG
- ▶ TMT-SCS-79081 2B+G+13+R PLUTO BLDG
- ▶ TMT-SCS-79082 TEACHER ACCOMODATION
- ▶ TMT-SCS-79083 ASAS TOWER (G+5P+HC+
43TYP+PH+HP
- ▶ TMT-SCS-79084 B+G+P+5+ROOF
- ▶ TMT-SCS-79087 Axis platinum G+8+GYM
RESD BLDG
- ▶ TMT-SCS-79088 2B+G+3P+24F RESD.
COMMERCAL
- ▶ TMT-SCS-79089 G+6P+18+HC AL NAHDA
SHARJAH
- ▶ TMT-SCS-79090 G+3 BUILDING
- ▶ TMT-SCS-79091 G+3 BUILDING



SOME OF OUR PROJECTS

- ▶ TMT-SCS-79092 G+P+10+HC
- ▶ TMT-SCS-79093 B+G+14T+SR+HC GERMAN
TOWER1
- ▶ TMT-SCS-79094 G+5P+15TYP IBTIKAR TOWER
- ▶ TMT-SCS-79095 B+G+1 SHOPPING CENTRE LULU
- ▶ TMT-SCS-79096 SPORT CITY TOWER
- ▶ TMT-SCS-79098 2B+G+3P+24F RESD.
COMMERCAL AG TOWER
- ▶ TMT-SCS-79099 3B+G+23P+ROOF
COMM/RESED
- ▶ TMT-SCS-79100 G+6P+18+HC AL NAHDA
SHARJAH
- ▶ TMT-SCS-79101 G+10,G+16, G+10 PLAZA
RESEDENCE
- ▶ TMT-SCS-79102 THE LE PRESIDUM
2B+G+11F+ROOF
- ▶ TMT-SCS-79104 G+M+OFFICE+GURAD ROOM
- ▶ TMT-SCS-79105 WORKSHOP + OFFICE
BUILDING
- ▶ TMT-SCS-79106 G+3 LABOUR
CAMP+AMENITIES
- ▶ TMT-SCS-79107 G+6+LR+UR
- ▶ TMT-SCS-79108 WAREHOUSE LOOP
AUTOMATION
- ▶ TMT-SCS-79109 G+5 BUILDING
- ▶ TMT-SCS-79110 G+3 LABOUR
CAMP+AMENITIES
- ▶ TMT-SCS-79111 G+5 AL WARQA
- ▶ TMT-SCS-79112 B+G+5F+ROOF
- ▶ TMT-SCS-79113 G+13 PLUTO BLDG
- ▶ TMT-SCS-79114 2B+G+13F+GYM BUILDING
- ▶ TMT-SCS-79115 B+G+7F+R
- ▶ TMT-SCS-79116 G+G INDUSTRIAL CITY
- ▶ TMT-SCS-79117 2B+G+2P+14F+ROOF
- ▶ TMT-SCS-79119 G+3 RED COMM BLDG
- ▶ TMT-SCS-79120 SOUTH DEVELOPMENT PHASE1
586 VILLAS
- ▶ TMT-SCS-79121 YAGHMOUR ENGINEERING
CONSULTANT EMAIL
- ▶ TMT-SCS-79122 G+4 NAD AL SHIBA
- ▶ TMT-SCS-79123 CINEPOLIS OASIS MALL
SHARJAH
- ▶ TMT-SCS-79124 VILLA PROJECTS
- ▶ TMT-SCS-79125 G+3 LABOUR ACCOMODATION
- ▶ TMT-SCS-79126 Dubai Police Building at Gate 11
- ▶ TMT-SCS-79127 3B+G+2P+17+RF
COMM+ OFFICE+RESED. BLDG
- ▶ TMT-SCS-79128 G+P+5+R RESEDENCIAL BLDG
- ▶ TMT-SCS-79130 THE VALLEY DEVELOPMENT
EDEN-NH01 362 TOWNHOUSES
- ▶ TMT-SCS-79131 LAWNZ BY DANUBE B+LG+7F+R
- ▶ TMT-SCS-79132 B+G+6+RAS+2RESED. BLDG
- ▶ TMT-SCS-79133 BLUE BAY WAIK



SOME OF DEVELOPER REFERENCES

albarari 

cinépolis



Brands For Less

DANUBE
PROPERTIES



ماجد الفطيم
MAJID AL FUTTAIM



TAMEER



SOL
PROPERTIES



سلطة واحة دبي للسيليكون
Dubai Silicon Oasis Authority



الشروق
ALSHUROOQ

ريم للتطوير
REEM DEVELOPERS



Premier Inn

OMNIYAT®



NAKHEEL



MAZAYA

AIM TO LEAD

MAG
property development

 LIME LIGHT
DEVELOPMENT



INTERMASS
ESTABLISHED 1977



GGICO



EMAAR

SOME OF DEVELOPER REFERENCES



هيئة الإمارات للمواصفات والمقاييس
Emirates Authority For Standardization & Metrology



شرطة دبي
DUBAI POLICE



موانئ دبي العالمية
DP WORLD

DAMAC
LIVE THE LUXURY



CONTINENTAL
INVESTMENTS



CARTEL
GROUP



ASAS
أساس
REAL ESTATE عقارية



الخليج العربي
للعقارات
Arabian Gulf Properties



الغريير
Al Ghurair



ACTION HOTELS



4DIRECTION
REAL ESTATE BROKER



وصل للعقارات
wasl properties



SOME OF CONSULTANT REFERENCES

orbit اوربت للاستشارات الهندسية
engineering consultants

الشارقة
للإستشارات الهندسية
Sharjah Engineering Consultants
Tel.: +971 6 56 10 111, Web.: www.shjeng.ae
Sharjah, Ajman, Umm Al Quwain, Ras Al Khaimah, Oman

erga

Arif&Bintoak

yaghmour architects
planners
engineers

UNii

UA+

شديد للاستشارات الهندسية
SHADID ENGINEERING CONSULTANTS



ENG. ADNAN SAFFARINI
Design, Supervision & Consultants

القبضة
AL QABDAH

برو-لاين
PRO
LINE
للإستشارات الهندسية
Engineering Consultants

رواد الخبرة للإستشارات الهندسية
Pioneers of Experts
Engineering Consultants

NEB
National Engineering Bureau
Architectural & Engineering Consultants

naga architects - engineers - designers - planners

mimar
www.mimar-group.com
Dubai - Abu Dhabi - Sharjah - Ajman - Doha - Cairo - Tripoli

MAZAYA
CONSULTING ENGINEERS

K ENGINEERING CONSULTANCY
الاستشارات الهندسية

KWEC
Al Khawajah Engineering Consultancy

KHATIB & ALAMI

jrhp
JOHN R. HARRIS & PARTNERS
ARCHITECTS - ENGINEERS - DESIGN & PLANNING CONSULTANTS

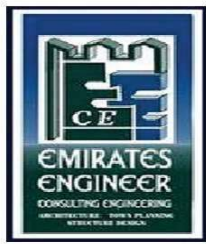
ISOMETRIC ENGINEERING CONSULTANCY
(Architects, Engineers, Planners)

International
العالمية
Engineering Consultants ■ ■ ■ مهندسون واستشاريون

INSPIRATION
CONSULTING ENGINEERS
مستشارون للإستشارات الهندسية

الطوع للإستشارات الهندسية والصناعية
GULF ENGINEERING & INDUSTRIAL CONSULTANCY

SOME OF CONSULTANT REFERENCES



CERTIFICATES





MIDDLE EAST OFFICE

TMT Global Technology FZE

Saif-zone Sharjah Airport

info@tmtuae.com

www.tmtuae.com

shop.amssuae.com



UK OFFICE

TMT Global Technology Ltd. (UK)

 120 Baker Street, 3rd Floor
London, England, W1U 6TU,
United Kingdom

 info@tmtglobal.co.uk

 www.tmtglobal.co.uk

