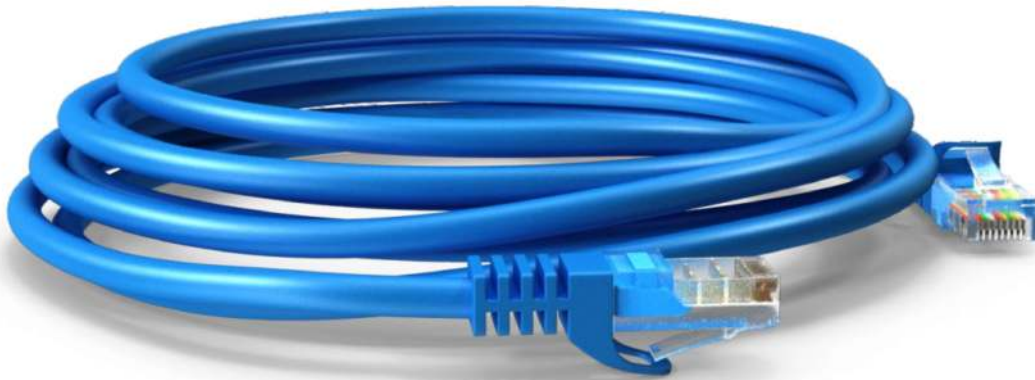


DATA PATCH CORD SERIES



DATA PATCH CORD SERIES

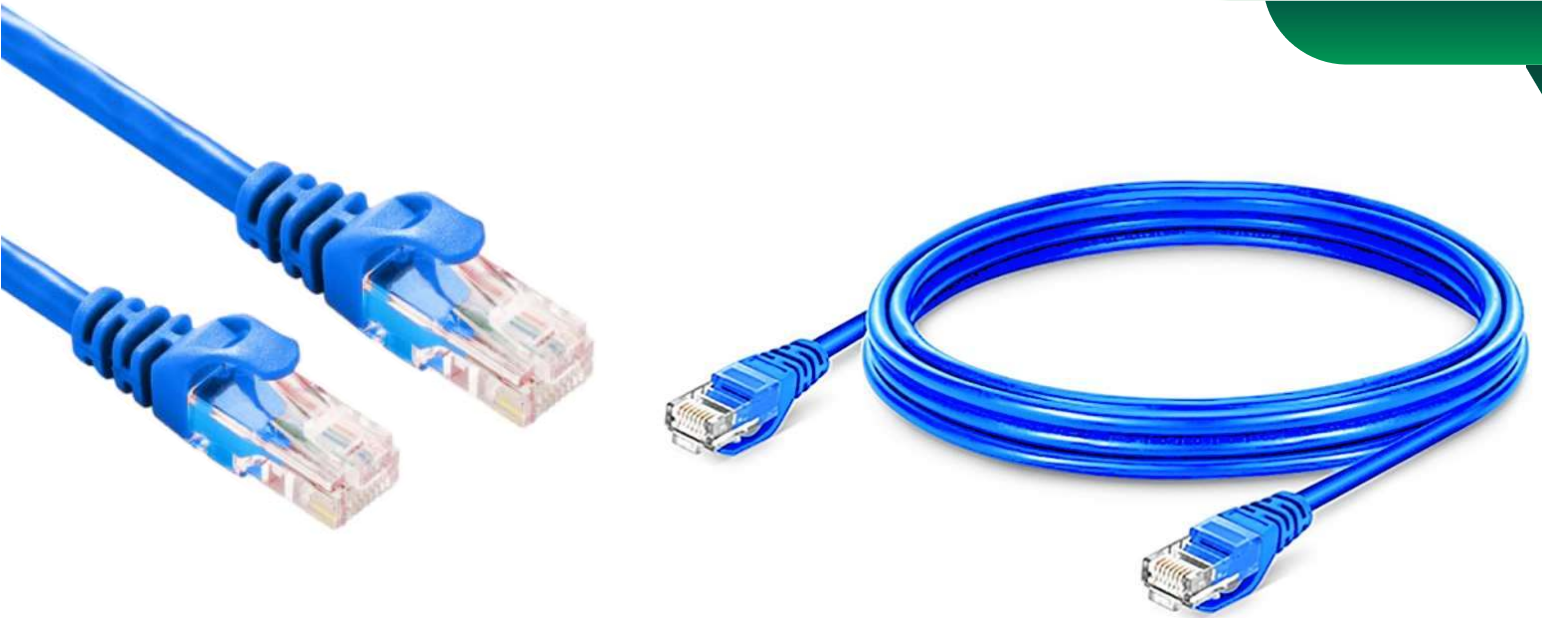


www.tmtglobal.co.uk info@tmtglobal.co.uk

Head Office 120 Baker Street, 3rd Floor, London, England, W1U 6tU,
United Kingdom



DATA PATCH CORD SERIES



CAT6 UTP PATCH CORD SERIES

GENERAL SPECIFICATION

Description	25 M CAT6 UTP PATCH CORD BLUE COLOR
Conductor Resistance	$\leq 5\Omega - \leq 20\Omega$
Insulation Resistance	$\geq 10M\Omega$
Characteristic Impedance	100 — 6 Ohm @ 1-250MHz -1-500 MHz
Contact Resistance	20 m Ohm max.
Resistance unbalance	2% max
Dielectric strength	1000 volts/1 minute min rms
Cable to Plug Tensile Strength	9 Kgf (90N) min
Durability	1200
Temperature Operating Range	-25°C to +70°C
Model No	6X3PMB25

