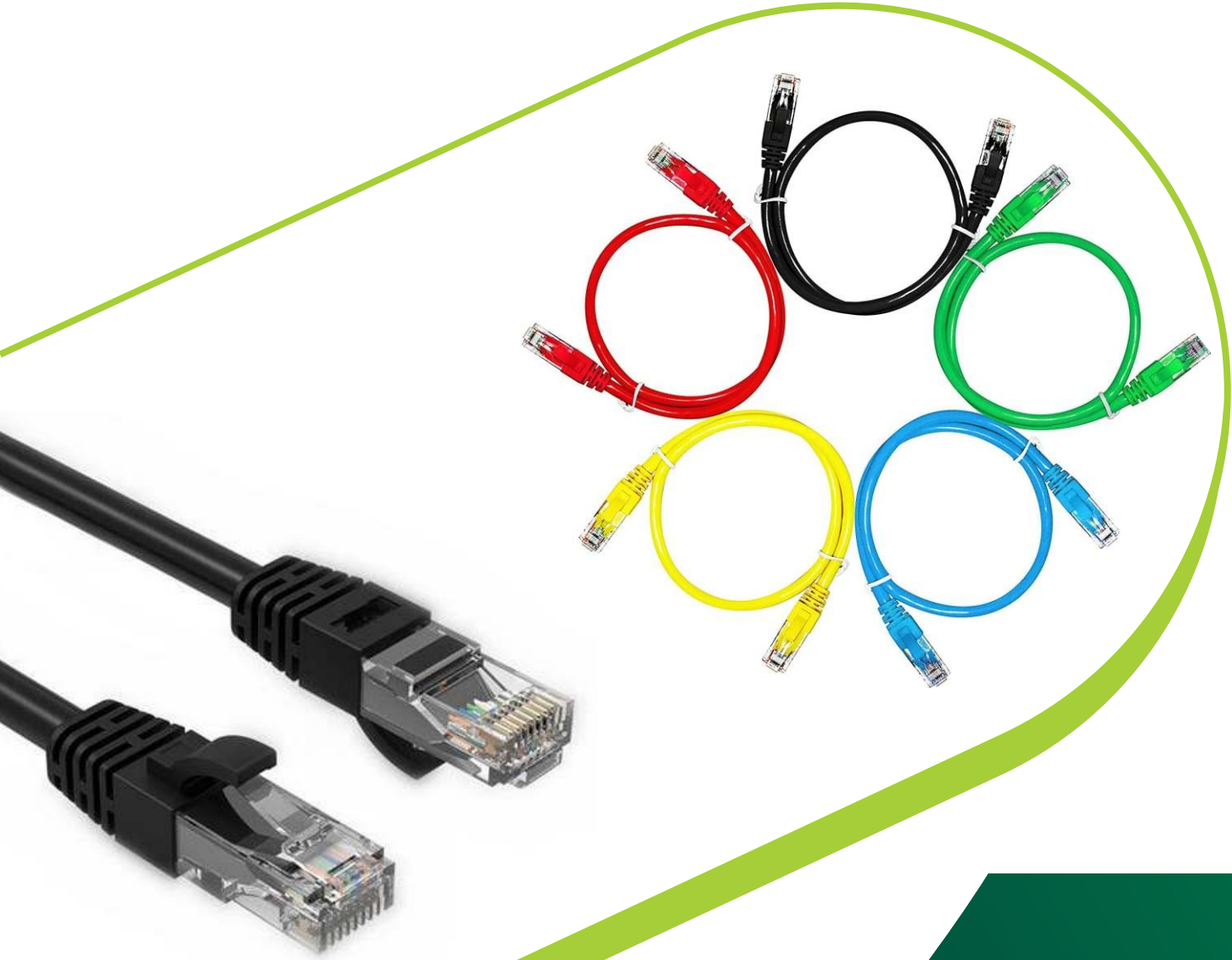


PATCH CORD SERIES



PATCH CORD SERIES



PATCH CORD SERIES



Standards : Flame test: comply with IEC 60332-1-2 EN 50173-1:2011 ISO/IEC11801:2011(Ed. 2.2) ANSI/TIA/EIA-568.2-D IEC61935-2:2010(Ed.3.0) EN 50173-2:2007 including amendment A1:2010

PHYSICAL AND MECHANICAL PROPERTIES		ELECTRICAL AND MECHANICAL SPECIFICATIONS	
Type	CAT6 U/UTP		
Basic Conductor	23AWG-24AWG TMT/Bare copper	Conductor Resistance	≤5Ω
Insulation	HDPE	Insulation Resistance	≥10MΩ
Pairs	4,twisted Pairs	Characteristic Impedance	100 — 6 Ohm @ 1-250MHz
Frequency Range	1-250MHZ	Contact Resistance	20 m Ohm max.
Impedance	100Ω	Resistance unbalance	2% max
Outer Jacket :	LSZH/PVC	Dielectric strength	1000 volts/1 minute min rms
Material	Phosphor Bronze with 30u" Gold over Nickel Plating	Coupling attenuation	40dB dak @ 30-100 MHz 40-20log (f / 100) @ 100-250 MHz
RJ45 Plug	8P8C 30U" U-TYPE 94-V2	Cable to Plug Tensile Strength	9 Kgf (90N) min
Cable OD	6.0 ±0.2 mm	Durability	1200
Color	Black,Blue,Orange,White,Green,Red	Temperature operating range	-25°C to +70°C

Ordering Information		
Model No	Product ID	Description
TMT-4500	6X3PBB00	0.5M CAT6 UTP PATCH CORD BLUE
TMT-4501	6X3PBB01	1M CAT6 UTP PATCH CORD BLUE
TMT-4502	6X3PBB02	2M CAT6 UTP PATCH CORD BLUE
TMT-4503	6X3PBB03	3M CAT6 UTP PATCH CORD BLUE
TMT-4504	6X3PBB04	4M CAT6 UTP PATCH CORD BLUE
TMT-4505	6X3PBB05	5M CAT6 UTP PATCH CORD BLUE
TMT-4506	6X3PBB06	6M CAT6 UTP PATCH CORD BLUE
TMT-4510	6X3PBB10	10M CAT6 UTP PATCH CORD BLUE
TMT-4515	6X3PBB15	15M CAT6 UTP PATCH CORD BLUE
TMT-4520	6X3PBB20	20M CAT6 UTP PATCH CORD BLUE
TMT-4525	6X3PBB25	25M CAT6 UTP PATCH CORD BLUE
TMT-4530	6X3PBB30	30M CAT6 UTP PATCH CORD BLUE



PATCH CORD SERIES



Standards : Flame test: comply with IEC 60332-1-2 EN 50173-1:2011 ISO/IEC11801:2011(Ed. 2.2) ANSI/TIA/EIA-568.2-D IEC61935-2:2010(Ed.3.0) EN 50173-2:2007 including amendment A1:2010

PHYSICAL AND MECHANICAL PROPERTIES		ELECTRICAL AND MECHANICAL SPECIFICATIONS	
Type	CAT6A U/UTP-CA6A S/FTP		
Basic Conductor	23AWG-24AWG TMT/Bare copper	Conductor Resistance	≤20Ω
Insulation	HDPE	Insulation Resistance	≥20MΩ
Pairs	4, twisted Pairs	Characteristic Impedance	100 — 6 Ohm @ 1-250MHz
Frequency Range	1-500MHZ	Contact Resistance	20 m Ohm max.
Impedance	100Ω	Resistance unbalance	2% max
Outer Jacket :	LSZH/PVC	Dielectric strength	1000 volts/1 minute min rms
Material	Phosphor Bronze with 30u" Gold over Nickel Plating	Coupling attenuation	55 dB min @ 30-100 MHz 55-20log(f/100) @100-500 MHz
RJ45 Plug	8P8C 30U" U-TYPE 94-V2	Cable to Plug Tensile Strength	9 Kgf (90N) min
Cable OD	6.0 ±0.2 mm	Durability	1200
Color	Black, Blue, Orange, White, Green, Red	Temperature operating range	-25°C to +70°C

Ordering Information		
Model No	Product ID	Description
TMT-4550	6A3PBB00	0.5M CAT6A UTP PATCH CORD BLUE
TMT-4551	6A3PBB01	1M CAT6A UTP PATCH CORD BLUE
TMT-4553	6A3PBB03	3M CAT6A UTP PATCH CORD BLUE
TMT-4555	6A3PBB05	5M CAT6A UTP PATCH CORD BLUE
TMT-4560	6A3PBB10	10M CAT6A UTP PATCH CORD BLUE
TMT-4561	6A3PBB15	15M CAT6A UTP PATCH CORD BLUE
TMT-4571	6A3SBB01	1M CAT6A STP PATCH CORD BLUE
TMT-4573	6A3SBB03	3M CAT6A STP PATCH CORD BLUE
TMT-4575	6A3SBB05	5M CAT6A STP PATCH CORD BLUE
TMT-4580	6A3SBB10	10M CAT6A STP PATCH CORD BLUE

