

DOOR ACCESS CONTROLLER SERIES



TMT Global 1 Door Access Control System

Conventional Function

- Offline operation
- real time supervision
- photo display
- mass storage
- flexible user privilege setup
- remote unlocking; multi-user supervision
- quick setting; convenient checking and query
- revisable and printable report form
- report can be exported to excel file
- card + password unlocking; alarm for long time unclosing
- alarm for invalid card swiping
- first card unlocking
- alarm for illegal break in
- unlocking at definite time
- e-map etc.

Professional Function

- For professional users such as bank
- cash house, telecom station, power supply station, prison and police station
- interface locking
- intimidation alarm
- integrated fire control
- anti-pass back and anti-tail
- Interlocking
- multi-card unlocking
- emergency double locking
- in door population checking
- unlocking based on internal and external validation.

Specification			
Communication	TCP/IP 10M/100M adaptive	English Software supportable database:	MS Access and SQL
Description	Control1 doors, get in the door by swiping card, and get out door by button		
Power Supply	12VDC 4-7A	Power Consumption of Circuit Board	Less than 100mA
Input Format of Reader	Wigand 26 (All card reader with compatible protocol, such as Motorola , HID, EM , Mifare one etc.)		
Quantity of Readers	1 pc.	Door Controlled	1
Door opening time extending setting	1-600 seconds (adjustable)	Max Qty of controller	No limit
Operation Temperature	minus 40°C-70°C	Operation Humidity	10-90 % RH , No Condensation
Qty of users	100,000 Users	Qty of Event Buffers (offline)	100,000 event buffers
Power interruption protection measure	High Speed Memory, Records never lose		
Max Distance from Reader to Controller	100m (suggestion distance 80m)		
Max Distance between Controllers	RS232: Communication Distance less than 13m, suggestion distance is 3m or less		
	RS485: bus line max length 1200m, suggestion length 1000m or less, if expansion device added, the distance could be 3000m		
	TCP/IP: Depends on net coverage area		
Collocations	PCB board, case, power, power line, serial port communication line, software, manual, certificate, key(2pcs), carton		
Alarm for long time door open	Yes	illegal break in	Yes intimidate Yes
Fire and alarm linkage	If no connection with the expansion board, only has software interface alarm, and drive the computer speaker. If connected with expansion board, is able to alarm by hardware, if connected with strengthened expansion board, then is able to Security alarm		
Compulsive open and close door at long time	Yes	Open door in remote distance	Yes
Inter block	Yes	Anti pass back and tail	Yes
Multi-card open door	Yes	Open long time at specified time	Yes
Electronic map	Yes	Urgency locking	Yes
First card unlocking	Yes	Unlock based on internal and external validation	Yes
Keypad (card + password, supper password)	Yes		

Remark: N de notes Qty of computer serial port or Qty of 485hub port, support 256pcs ports

ORDER INFORMATION		
Model No	Product ID	Description
TMT-7601	TMT-3NXXXX1	1DOOR ACCESS CONTOLLER





TMT Global 2 Door Access Control System

Conventional Function

- Offline operation
- real time supervision
- photo display
- mass storage
- flexible user privilege setup
- remote unlocking; multi-user supervision
- quick setting; convenient checking and query
- revisable and printable report form
- report can be exported to excel file
- card + password unlocking; alarm for long time unclosing
- alarm for invalid card swiping
- first card unlocking
- alarm for illegal break in
- unlocking at definite time
- e-map etc.

Professional Function

- For professional users such as bank
- cash house, telecom station, power supply station, prison and police station
- interface locking
- intimidation alarm
- integrated fire control
- anti-pass back and anti-tail
- Interlocking
- multi-card unlocking
- emergency double locking
- in door population checking
- unlocking based on internal and external validation.

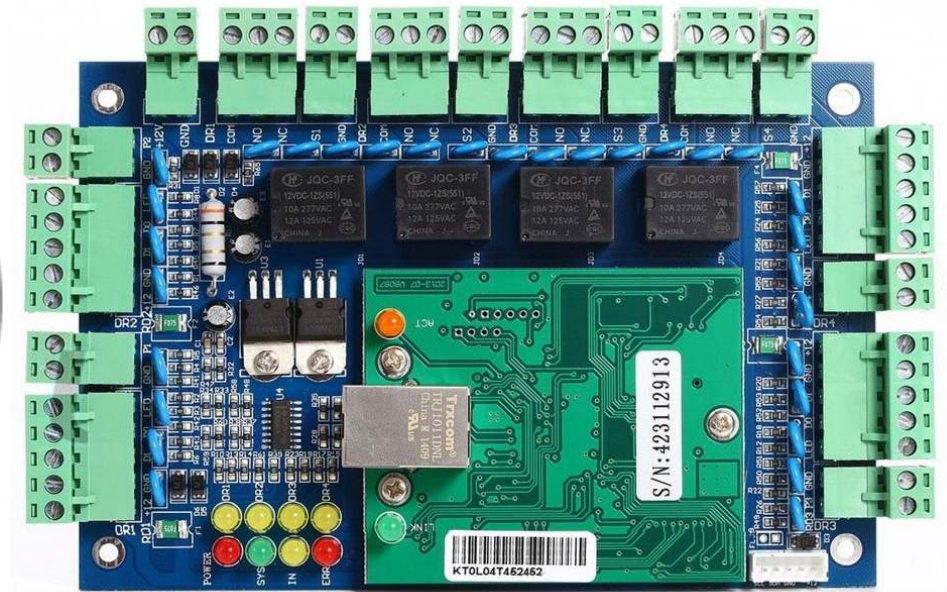
Specification			
Communication	TCP/IP 10M/100M adaptive	English Software supportable database:	MS Access and SQL
Description	Control 2 doors, get in the door by swiping card, and get out door by button		
Power Supply	12VDC 4-7A	Power Consumption of Circuit Board	Less than 100mA
Input Format of Reader	Wigand 26 (All card reader with compatible protocol, such as Motorola , HID , EM , Mifare one etc.)		
Quantity of Readers	2 pc.	Door Controlled	2
Door opening time extending setting	1-600 seconds (adjustable)	Max Qty of controller	No limit
Operation Temperature	minus 40°C-70°C	Operation Humidity	10-90 % RH , No Condensation
Qty of users	100,000 Users	Qty of Event Buffers (offline)	100,000 event buffers
Power interruption protection measure	High Speed Memory, Records never lose		
Max Distance from Reader to Controller	100m (suggestion distance 80m)		
Max Distance between Controllers	RS232: Communication Distance less than 13m, suggestion distance is 3m or less		
	RS485: bus line max length 1200m, suggestion length 1000m or less, if expansion device added, the distance could be 3000m		
	TCP/IP: Depends on net coverage area		
Collocations	PCB board, case, power, power line, serial port communication line, software, manual, certificate, key(2pcs), carton		
Alarm for long time door open	Yes	illegal break in	Yes intimidate Yes
Fire and alarm linkage	If no connection with the expansion board, only has software interface alarm, and drive the computer speaker. If connected with expansion board, is able to alarm by hardware, if connected with strengthened expansion board, then is able to Security alarm		
Compulsive open and close door at long time	Yes	Open door in remote distance	Yes
Inter block	Yes	Anti pass back and tail	Yes
Multi-card open door	Yes	Open long time at specified time	Yes
Electronic map	Yes	Urgency locking	Yes
First card unlocking	Yes	Unlock based on internal and external validation	Yes
Keypad (card + password, supper password)	Yes		

Remark: N de notes Qty of computer serial port or Qty of 485hub port, support 256pcs ports

ORDER INFORMATION

Model No	Product ID	Description
TMT-7602	TMT-3NXXXX2	2DOOR ACCESS CONTROLLER





DOOR ACCESS CONTROLLER SERIES



TMT Global 4 Door Access Control System

Conventional Function

- Offline operation
- real time supervision
- photo display
- mass storage
- flexible user privilege setup
- remote unlocking; multi-user supervision
- quick setting; convenient checking and query
- revisable and printable report form
- report can be exported to excel file
- card + password unlocking; alarm for long time unclosing
- alarm for invalid card swiping
- first card unlocking
- alarm for illegal break in
- unlocking at definite time
- e-map etc.

Professional Function

- For professional users such as bank
- cash house, telecom station, power supply station, prison and police station
- interface locking
- intimidation alarm
- integrated fire control
- anti-pass back and anti-tail
- Interlocking
- multi-card unlocking
- emergency double locking
- in door population checking
- unlocking based on internal and external validation.

Specification

Communication	TCP/IP 10M/100M adaptive	English Software supportable database:	MS Access and SQL
Description	Control 4 doors, get in the door by swiping card, and get out door by button		
Power Supply	12VDC 4-7A	Power Consumption of Circuit Board	Less than 100mA
Input Format of Reader	Wigand 26 (All card reader with compatible protocol, such as Motorola , HID, EM , Mifare one etc.)		
Quantity of Readers	4 pc.	Door Controlled	4
Door opening time extending setting	1-600 seconds (adjustable)	Max Qty of controller	No limit
Operation Temperature	minus 40°C-70°C	Operation Humidity	10-90 % RH , No Condensation
Qty of users	100,000 Users	Qty of Event Buffers (offline)	100,000 event buffers
Power interruption protection measure	High Speed Memory, Records never lose		
Max Distance from Reader to Controller	100m (suggestion distance 80m)		
Max Distance between Controllers	RS232: Communication Distance less than 13m, suggestion distance is 3m or less		
	RS485: bus line max length 1200m, suggestion length 1000m or less, if expansion device added, the distance could be 3000m		
	TCP/IP: Depends on net coverage area		
Collocations	PCB board, case, power, power line, serial port communication line, software, manual, certificate, key(2pcs), carton		
Alarm for long time door open	Yes	illegal break in	Yes intimidate Yes
Fire and alarm linkage	If no connection with the expansion board, only has software interface alarm, and drive the computer speaker. If connected with expansion board, is able to alarm by hardware, if connected with strengthened expansion board, then is able to Security alarm		
Compulsive open and close door at long time	Yes	Open door in remote distance	Yes
Inter block	Yes	Anti pass back and tail	Yes
Multi-card open door	Yes	Open long time at specified time	Yes
Electronic map	Yes	Urgency locking	Yes
First card unlocking	Yes	Unlock based on internal and external validation	Yes
Keypad (card + password, supper password)	Yes		

Remark: N de notes Qty of computer serial port or Qty of 485hub port, support 256pcs ports

ORDER INFORMATION

Model No	Product ID	Description
TMT-7604	TMT-3NXXXX4	4DOOR ACCESS CONTROLLER

