



TMT Global

**Products
Catalog**

ABOUT US

TMT Global Technology was formed in the year 2005 in London, UK with sole aim of providing High Quality Security Systems.

TMT Global Products became huge success in a short period of with our amazing quality and affordable prices entering new markets and venturing to a wide range of targets. A constant theme within the various iterations of the company for over a decade has been continuous improvement and innovation – always looking for a better way. In house testing, product prototyping and product development, in conjunction with customers and key academic institutions, has helped the company to remain focused on innovative solutions and leading edge initiatives to improve competitiveness and provide customer solutions.

Strategic alignment with key supply chain providers has resulted in consistent, reliable competitive sourcing of materials. Suppliers are actively encouraged to contribute to product improvement and suggest creative approaches to improving product performance. we became a trusted brand among many prestigious construction companies.

“Experienced team
Continuously analyzes the
Commercial and technical terms by
Comparing the updated market
Potential and technology
Demands with SWOT (Strength,
Weakness, Opportunity and Threat),,

CONTENT

DOOR CONTROLLER SERIES

STAND ALONE ACCESS CONTROL SERIES

BIOMETRIC ACCESS CONTROL SERIES

ACCESS CONTROL READERS SERIES

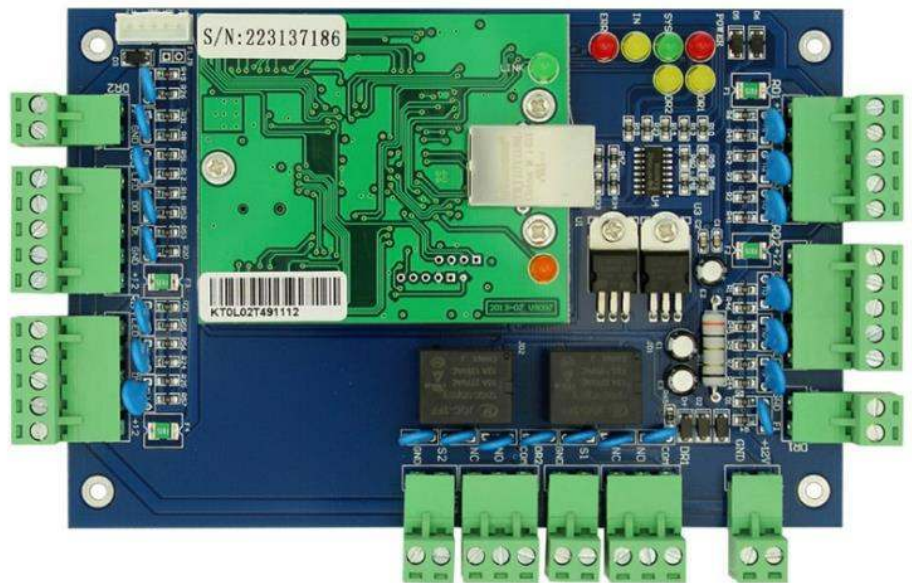
UHF LONG RANGE READERS SERIES

ACCESS CONTROL LOCK SERIES

ACCESS CONTROL CARD & STICKER SERIES

ACCESS CONTROL PUSH BUTTON SERIES

ACCESS CONTROL MAGNETIC SENSOR SERIES



DOOR ACCESS CONTROLLER SERIES



TMT Global 1 Door Access Control System

Conventional Function

- Offline operation
- real time supervision
- photo display
- mass storage
- flexible user privilege setup
- remote unlocking; multi-user supervision
- quick setting; convenient checking and query
- revisable and printable report form
- report can be exported to excel file
- card + password unlocking; alarm for long time unclosing
- alarm for invalid card swiping
- first card unlocking
- alarm for illegal break in
- unlocking at definite time
- e-map etc.

Professional Function

- For professional users such as bank
- cash house, telecom station, power supply station, prison and police station
- interface locking
- intimidation alarm
- integrated fire control
- anti-pass back and anti-tail
- Interlocking
- multi-card unlocking
- emergency double locking
- in door population checking
- unlocking based on internal and external validation.

Specification

Communication	TCP/IP 10M/100M adaptive	English Software supportable database:	MS Access and SQL
Description	Control1 doors, get in the door by swiping card, and get out door by button		
Power Supply	12VDC 4-7A	Power Consumption of Circuit Board	Less than 100mA
Input Format of Reader	Wigand 26 (All card reader with compatible protocol, such as Motorola , HID, EM , Mifare one etc.)		
Quantity of Readers	1 pc.	Door Controlled	1
Door opening time extending setting	1-600 seconds (adjustable)	Max Qty of controller	No limit
Operation Temperature	minus 40°C-70°C	Operation Humidity	10-90 % RH , No Condensation
Qty of users	100,000 Users	Qty of Event Buffers (offline)	100,000 event buffers
Power interruption protection measure	High Speed Memory, Records never lose		
Max Distance from Reader to Controller	100m (suggestion distance 80m)		
Max Distance between Controllers	RS232: Communication Distance less than 13m, suggestion distance is 3m or less		
	RS485: bus line max length 1200m, suggestion length 1000m or less, if expansion device added, the distance could be 3000m		
	TCP/IP: Depends on net coverage area		
Collocations	PCB board, case, power, power line, serial port communication line, software, manual, certificate, key(2pcs), carton		
Alarm for long time door open	Yes	illegal break in	Yes intimidate Yes
Fire and alarm linkage	If no connection with the expansion board, only has software interface alarm, and drive the computer speaker. If connected with expansion board, is able to alarm by hardware, if connected with strengthened expansion board, then is able to Security alarm		
Compulsive open and close door at long time	Yes	Open door in remote distance	Yes
Inter block	Yes	Anti pass back and tail	Yes
Multi-card open door	Yes	Open long time at specified time	Yes
Electronic map	Yes	Urgency locking	Yes
First card unlocking	Yes	Unlock based on internal and external validation	Yes
Keypad (card + password, supper password)	Yes		

Remark: N de notes Qty of computer serial port or Qty of 485hub port, support 256pcs ports

ORDER INFORMATION

Model No	Product ID	Description
TMT-7601	TMT-3NXXXX1	1DOOR ACCESS CONTOLLER





TMT Global 2 Door Access Control System

Conventional Function

- Offline operation
- real time supervision
- photo display
- mass storage
- flexible user privilege setup
- remote unlocking; multi-user supervision
- quick setting; convenient checking and query
- revisable and printable report form
- report can be exported to excel file
- card + password unlocking; alarm for long time unclosing
- alarm for invalid card swiping
- first card unlocking
- alarm for illegal break in
- unlocking at definite time
- e-map etc.

Professional Function

- For professional users such as bank
- cash house, telecom station, power supply station, prison and police station
- interface locking
- intimidation alarm
- integrated fire control
- anti-pass back and anti-tail
- Interlocking
- multi-card unlocking
- emergency double locking
- in door population checking
- unlocking based on internal and external validation.

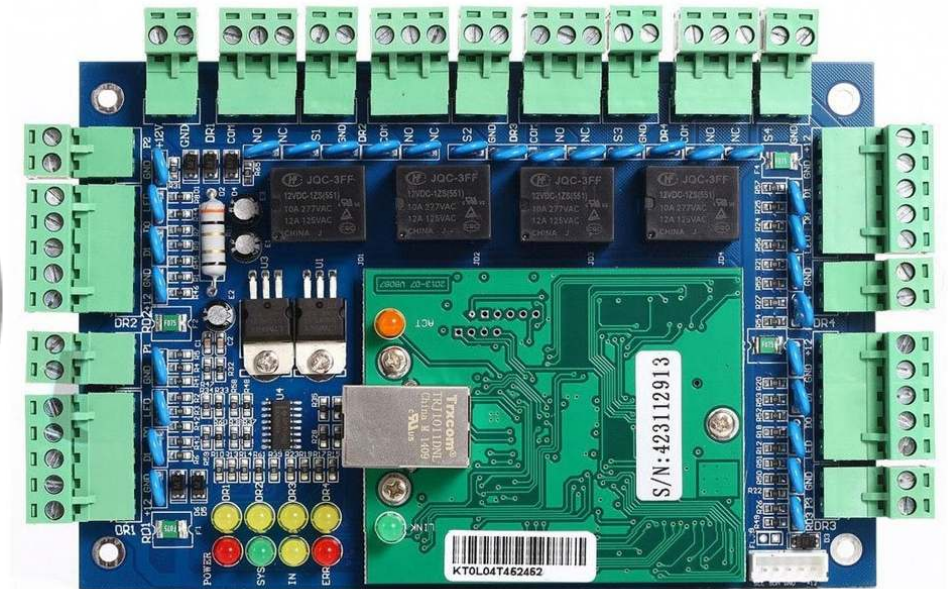
Specification			
Communication	TCP/IP 10M/100M adaptive	English Software supportable database:	MS Access and SQL
Description	Control 2 doors, get in the door by swiping card, and get out door by button		
Power Supply	12VDC 4-7A	Power Consumption of Circuit Board	Less than 100mA
Input Format of Reader	Wigand 26 (All card reader with compatible protocol, such as Motorola , HID , EM , Mifare one etc.)		
Quantity of Readers	2 pc.	Door Controlled	2
Door opening time extending setting	1-600 seconds (adjustable)	Max Qty of controller	No limit
Operation Temperature	minus 40°C-70°C	Operation Humidity	10-90 % RH , No Condensation
Qty of users	100,000 Users	Qty of Event Buffers (offline)	100,000 event buffers
Power interruption protection measure	High Speed Memory, Records never lose		
Max Distance from Reader to Controller	100m (suggestion distance 80m)		
Max Distance between Controllers	RS232: Communication Distance less than 13m, suggestion distance is 3m or less		
	RS485: bus line max length 1200m, suggestion length 1000m or less, if expansion device added, the distance could be 3000m		
	TCP/IP: Depends on net coverage area		
Collocations	PCB board, case, power, power line, serial port communication line, software, manual, certificate, key(2pcs), carton		
Alarm for long time door open	Yes	illegal break in	Yes intimidate Yes
Fire and alarm linkage	If no connection with the expansion board, only has software interface alarm, and drive the computer speaker. If connected with expansion board, is able to alarm by hardware, if connected with strengthened expansion board, then is able to Security alarm		
Compulsive open and close door at long time	Yes	Open door in remote distance	Yes
Inter block	Yes	Anti pass back and tail	Yes
Multi-card open door	Yes	Open long time at specified time	Yes
Electronic map	Yes	Urgency locking	Yes
First card unlocking	Yes	Unlock based on internal and external validation	Yes
Keypad (card + password, supper password)	Yes		

Remark: N de notes Qty of computer serial port or Qty of 485hub port, support 256pcs ports

ORDER INFORMATION

Model No	Product ID	Description
TMT-7602	TMT-3NXXXX2	2DOOR ACCESS CONTROLLER





DOOR ACCESS CONTROLLER SERIES



TMT Global 4 Door Access Control System

Conventional Function

- Offline operation
- real time supervision
- photo display
- mass storage
- flexible user privilege setup
- remote unlocking; multi-user supervision
- quick setting; convenient checking and query
- revisable and printable report form
- report can be exported to excel file
- card + password unlocking; alarm for long time unclosing
- alarm for invalid card swiping
- first card unlocking
- alarm for illegal break in
- unlocking at definite time
- e-map etc.

Professional Function

- For professional users such as bank
- cash house, telecom station, power supply station, prison and police station
- interface locking
- intimidation alarm
- integrated fire control
- anti-pass back and anti-tail
- Interlocking
- multi-card unlocking
- emergency double locking
- in door population checking
- unlocking based on internal and external validation.

Specification

Communication	TCP/IP 10M/100M adaptive	English Software supportable database:	MS Access and SQL
Description	Control 4 doors, get in the door by swiping card, and get out door by button		
Power Supply	12VDC 4-7A	Power Consumption of Circuit Board	Less than 100mA
Input Format of Reader	Wigand 26 (All card reader with compatible protocol, such as Motorola , HID , EM , Mifare one etc.)		
Quantity of Readers	4 pc.	Door Controlled	4
Door opening time extending setting	1-600 seconds (adjustable)	Max Qty of controller	No limit
Operation Temperature	minus 40°C-70°C	Operation Humidity	10-90 % RH , No Condensation
Qty of users	100,000 Users	Qty of Event Buffers (offline)	100,000 event buffers
Power interruption protection measure	High Speed Memory, Records never lose		
Max Distance from Reader to Controller	100m (suggestion distance 80m)		
Max Distance between Controllers	RS232: Communication Distance less than 13m, suggestion distance is 3m or less		
	RS485: bus line max length 1200m, suggestion length 1000m or less, if expansion device added, the distance could be 3000m		
	TCP/IP: Depends on net coverage area		
Collocations	PCB board, case, power, power line, serial port communication line, software, manual, certificate, key(2pcs), carton		
Alarm for long time door open	Yes	illegal break in	Yes intimidate Yes
Fire and alarm linkage	If no connection with the expansion board, only has software interface alarm, and drive the computer speaker. If connected with expansion board, is able to alarm by hardware, if connected with strengthened expansion board, then is able to Security alarm		
Compulsive open and close door at long time	Yes	Open door in remote distance	Yes
Inter block	Yes	Anti pass back and tail	Yes
Multi-card open door	Yes	Open long time at specified time	Yes
Electronic map	Yes	Urgency locking	Yes
First card unlocking	Yes	Unlock based on internal and external validation	Yes
Keypad (card + password, supper password)	Yes		

Remark: N de notes Qty of computer serial port or Qty of 485hub port, support 256pcs ports

ORDER INFORMATION

Model No	Product ID	Description
TMT-7604	TMT-3NXXXX4	4DOOR ACCESS CONTROLLER





STAND ALONE ACCESS CONTROL SERIES

TMT Global Stand Alone Water Proof Access Control

TMT Global single door multifunction standalone access controller or a Wiegand output keypad or card reader.

It is suitable for mounting either indoor or outdoor in harsh environments. It is housed in a strong, sturdy and vandal proof Zinc Alloy electroplated case which is available in either a bright silver or matt silver finish.

The electronics are fully potted so the unit is waterproof and conforms to IP68. This unit supports up to 2000 users in either a Card, 4 digit PIN, or a Card + PIN option. The inbuilt card reader supports 125KHZ EM cards, 13.56MHz Mifare cards. The unit has many extra features including lock output current short circuit protection, Wiegand output and a backlit keypad. These features make the unit an ideal choice for door access not only for small shops and domestic households but also for commercial and industrial applications such as factories, warehouses, laboratories, banks and prisons.

Features

- Waterproof, conforms to IP65/IP68
- Strong Zinc Alloy Electroplated anti-vandal case
- Full programming from the keypad
- 2000 users, supports Card, PIN, Card + PIN
- Can be used as a stand alone keypad
- Backlight keys
- Wiegand 26 input for connection to external reader
- Wiegand 26 output for connection to a controller
- Adjustable Door Output time, Alarm time, Door Open time
- Very low power consumption (30mA)
- Fast operating speed, <20ms with 2000 users
- Lock output current short circuit protection
- Easy to install and program
- Built in light dependent resistor (LDR) for anti tamper
- Built in buzzer
- Red, Yellow and Green LEDES display the working status



Waterproof Structure Strong Adaptability

Metal case, weatherproof, outdoor use.
Multi accesses, convenient, safe.

Specification	
Card type	NL
Waterproof degree	IP68
Environment Humidity	10% ~ 90%
Lock output	≤3A
Working voltage	DC12-24V ±10%
Static electricity	≤30mA
Alarm output	≤20A
Output short circuit protection time	100μS
Card read distance	2 ~ 5cm
Ambient temperature	-45°C ~ 60°C
Door Opening Time	0 ~ 99s(Adjustable)
Metal structure design	anti-vandal Digital backlight keyboard
All-in-one	WG26 output/input
User capacity	2000 card user card, 2000 user password
Access Way	card, password, card + password
The doorbell button and interface	buttons and isolation circuit Connect to any external bell
Dimension	120x80x25mm

ORDER INFORMATION		
Model No	Product ID	Description
TMT-7610	TMT-1S110311	STAND ALONE ACCESS CONTROL WATER PROOF IP68



STAND ALONE ACCESS CONTROL SERIES

TMT Global Stand Alone Water Proof Access Control

TMT Global single door multifunction standalone access controller or a Wiegand output keypad or card reader. It is suitable for mounting either indoor or outdoor in harsh environments. It is housed in a strong, sturdy and vandal proof Zinc Alloy electroplated case which is available in either a bright silver or matt silver finish.

The electronics are fully potted so the unit is waterproof and conforms to IP68. This unit supports up to 2000 users in either a Card, 4 digit PIN, or a Card + PIN option. The inbuilt card reader supports 125KHZ EM cards, 13.56MHz Mifare cards. The unit has many extra features including lock output current short circuit protection, Wiegand output and a backlit keypad. These features make the unit an ideal choice for door access not only for small shops and domestic households but also for commercial and industrial applications such as factories, warehouses, laboratories, banks and prisons.

Features

- Waterproof, conforms to IP65/IP68
- Strong Zinc Alloy Electroplated anti-vandal case
- Full programming from the keypad
- 2000 users, supports Card, PIN, Card + PIN
- Can be used as a stand alone keypad
- Backlight keys
- Wiegand 26 input for connection to external reader
- Wiegand 26 output for connection to a controller
- Adjustable Door Output time, Alarm time, Door Open time
- Very low power consumption (30mA)
- Fast operating speed, <20ms with 2000 users
- Lock output current short circuit protection
- Easy to install and program
- Built in light dependent resistor (LDR) for anti tamper
- Built in buzzer
- Red, Yellow and Green LEDS display the working status



Western Style Fashionable And Beautiful

Streamlined design, modern and fashionable.
waterproof and anti-vandal
Completely solve the metal shielding for car reader

Specification	
Card type	NL
Waterproof degree	IP68
Environment Humidity	10% ~ 90%
Lock output	≤1A
Working voltage	DC12-24V ±10%
Static electricity	≤30mA
Alarm output	≤20A
Output short circuit protection time	100μS
Card read distance	2 ~ 5cm
Ambient temperature	-45°C ~ 60°C
Door Opening Time	0 ~ 99s(Adjustable)
Metal structure design	anti-vandal Digital backlit keyboard
All-in-one	WG26 output/input
User capacity	2000 card user card, 2000 user password
Access Way	card, password, card + password
The doorbell button and interface	buttons and isolation circuit Connect to any external bell
Dimension	120x75x25mm

ORDER INFORMATION		
Model No	Product ID	Description
TMT-7612	TMT-1S110511	STAND ALONE ACCESS CONTROL WATER PROOF IP68



STAND ALONE ACCESS CONTROL SERIES

TMT Global Stand Alone Water Proof Access Control

TMT Global single door multifunction standalone access controller or a Wiegand output keypad or card reader. It is suitable for mounting either indoor or outdoor in harsh environments. It is housed in a strong, sturdy and vandal proof Zinc Alloy electroplated case which is available in either a bright silver or matt silver finish.

The electronics are fully potted so the unit is waterproof and conforms to IP68. This unit supports up to 2000 users in either a Card, 4 digit PIN, or a Card + PIN option. The inbuilt card reader supports 125KHZ EM cards, 13.56MHz Mifare cards. The unit has many extra features including lock output current short circuit protection, Wiegand output and a backlit keypad. These features make the unit an ideal choice for door access not only for small shops and domestic households but also for commercial and industrial applications such as factories, warehouses, laboratories, banks and prisons.

Features

- Waterproof, conforms to IP65/IP68
- Strong Zinc Alloy Electroplated anti-vandal case
- Full programming from the keypad
- 2000 users, supports Card, PIN, Card + PIN
- Can be used as a stand alone keypad
- Backlight keys
- Wiegand 26 input for connection to external reader
- Wiegand 26 output for connection to a controller
- Adjustable Door Output time, Alarm time, Door Open time
- Very low power consumption (30mA)
- Fast operating speed, <20ms with 2000 users
- Lock output current short circuit protection
- Easy to install and program
- Built in light dependent resistor (LDR) for anti tamper
- Built in buzzer
- Red, Yellow and Green LEDS display the working status

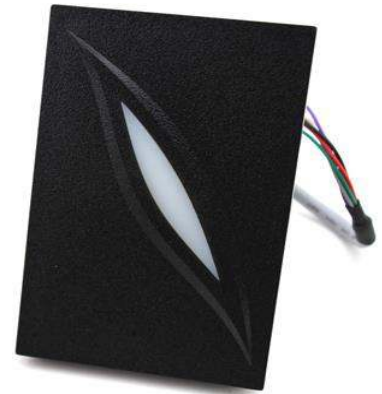


Specification	
Card type	NL
Waterproof degree	IP68
Environment Humidity	10% ~ 90%
Lock output	≤3A
Working voltage	DC12-24V ±10%
Static electricity	≤30mA
Alarm output	≤20A
Output short circuit protection time	100μS
Card read distance	2 ~ 5cm
Ambient temperature	-45°C ~ 60°C
Door Opening Time	0 ~ 99s(Adjustable)
Metal structure design	anti-vandal Digital backlit keyboard
All-in-one	WG26 output/input
User capacity	2000 card user card, 2000 user password
Access Way	card, password, card + password
The doorbell button and interface	buttons and isolation circuit Connect to any external bell
Dimension	120x56x20mm

ORDER INFORMATION		
Model No	Product ID	Description
TMT-7611	TMT-1S110411	STAND ALONE ACCESS CONTROL WATER PROOF IP68



ACCESS CONTROL EM CARD READERS SERIES



TMT Global Access Control RFID Card Reader

TMT Global single door multifunction standalone access controller or a Wiegand output keypad or card reader. It is suitable for mounting either indoor or outdoor in harsh environments. It is housed in a strong, sturdy and vandal proof Zinc Alloy electroplated case which is available in either a bright silver or matt silver finish. The electronics are fully potted so the unit is waterproof and conforms to IP68. This unit supports up to 2000 users in either a Card, 4 digit PIN, or a Card + PIN option. The inbuilt card reader supports 125KHZ EM cards, 13.56MHz Mifare cards. The unit has many extra features including lock output current short circuit protection, Wiegand output and a backlit keypad. These features make the unit an ideal choice for door access not only for small shops and domestic households but also for commercial and industrial applications such as factories, warehouses, laboratories, banks and prisons.

Features

- > 125KHz Proximity card reader with WG26 output
- > Read Range: Up to 10CM(125KHz)/5CM(13.56MHz)
- > 26/34bit Wiegand (default)
- > Easy to install on Metal Door Frame or Mullion
- > External LED Control
- > External Buzzer Control
- > Indoor / Outdoor Operation
- > Waterproof IP65
- > Reverse Polarity Protection

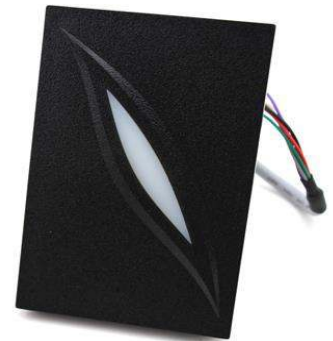
Read Range	EM: Up to 10CM, MF:Up to 5CM
Reading Time (Card)	≤300ms
Power / Current	DC 6-14V / Max.70mA
Input Port	2ea (External LED Control, External Buzzer Control)
Output Format	26bit/34bit Wiegand (default)
LED Indicator	2 Colour LED Indicators(Red and Green)
Beeper	Yes
Material	ABS+PC with texture
Operating Temperature	-20° to +65°C
Operating Humidity	10% to 90% relative humidity non-condensing
Color	Black
Dimension(W x H x T)mm	115 x 75 x 18mm
Index of Protection	IP65

ORDER INFORMATION

Model No	Product ID	Description
TMT-7623	TMT-2S1X3131	EM Card Reader Water Proof



**ACCESS
CONTROL MIFARE
CARD READERS SERIES**



TMT Global Access Control Mifare Card Reader

TMT Global single door multifunction standalone access controller or a Wiegand output keypad or card reader. It is suitable for mounting either indoor or outdoor in harsh environments. It is housed in a strong, sturdy and vandal proof Zinc Alloy electroplated case which is available in either a bright silver or matt silver finish.

The electronics are fully potted so the unit is waterproof and conforms to IP68. This unit supports up to 2000 users in either a Card, 4 digit PIN, or a Card + PIN option. The inbuilt card reader supports 125KHZ EM cards, 13.56MHz Mifare cards. The unit has many extra features including lock output current short circuit protection, Wiegand output and a backlit keypad. These features make the unit an ideal choice for door access not only for small shops and domestic households but also for commercial and industrial applications such as factories, warehouses, laboratories, banks and prisons.

Features

- > Mifare-13.56MHz Mifare card reader with WG34 output
- > Read Range: Up to 10CM(125KHz)/5CM(13.56MHz)
- > 26/34bit Wiegand (default)
- > Easy to install on Metal Door Frame or Mullion
- > External LED Control
- > External Buzzer Control
- > Indoor / Outdoor Operation
- > Waterproof IP65
- > Reverse Polarity Protection

Read Range	EM: Up to 10CM, MF:Up to 5CM
Reading Time (Card)	≤300ms
Power / Current	DC 6-14V / Max.70mA
Input Port	2ea (External LED Control, External Buzzer Control)
Output Format	26bit/34bit Wiegand (default)
LED Indicator	2 Colour LED Indicators(Red and Green)
Beeper	Yes
Material	ABS+PC with texture
Operating Temperature	-20° to +65°C
Operating Humidity	10% to 90% relative humidity non-condensing
Color	Black
Dimension(W x H x T)mm	115 x 75 x 18mm
Index of Protection	IP65

ORDER INFORMATION

Model No	Product ID	Description
TMT-7624	TMT-2S2X3131	Mifare Card Reader Water Proof



ACCESS CONTROL LONG RANGE UHF READERS SERIES

TMT Global long range Integrated Reader widely applied in intelligent transportation, customs access management, warehouse logistics.

Applications

- Vehicle parking, intelligent weighing
- Warehouse, logistics management
- Asset management
- Production line management

Functions

- UHF (860-868MHz) band, equipped with 12 DBI antenna
- Support standard RS-232, Wiegand interface
- Multi-group I/O ports, controlling the functional mode of the reader/writer
- Order-trigger, set time-trigger and out-trigger suitable for customer's applications
- Upgrade firmware by serial port online
- Strong API user interface



Performance Index	
Operating Frequency	860-868MHz, RF band customized (optional)
Frequency Hopping	FHSS or Fixed Frequency
Power Output	+20dBm ~ +30dBm@50Ω load, 1dBm each step
Antenna	Built-in 12dBi linear polarization antenna (horizontal/vertical customized)
Communication Interfaces	RS-232, Wiegand 26/34
Optional Interfaces	RS-485, 802.11 WIFI Module and 10M/100M Ethernet interfaces
I/O Interfaces	2-channel Relay Output, 2-channel Trigger Input, 2-channel level Output (optional)
Firmware Update	Firmware Upgrade
Application Software Platform	API(C++, C#) development kit (can be customized)
Tag Operation	
Tag Protocol	ISO18000-6B, EPC Class 1 Gen 2(ISO18000-6C)
Reading Range	0~15m
Writing Range	0~5m
Mechanical/Electric Performance	
IP Rating	IP66
Indicator	Buzzer and LED(Power, Antenna, Reading/Writing)
Power	DC 12V
Power Assumption	2W(Standby), 10W(Working)
Product Dimension	445mm x 445mm x 78mm (LxWxH)
Package Dimension	600mm x 500mm x 110mm (LxWxH)
Net Weight	3.5kg
Gross Weight	6.23kg
Operating Temperature	-40°C ~ +60°C
Storage Temperature	-60°C ~ +80°C
Humidity	5% ~ 95%(non-condensing)

ORDER INFORMATION	
Model No	Description
TMT-7641	LONG RANGE UHF READER UP TO 15M RANGE

MAGNETIC SINGLE DOOR LOCK SERIES





280KG Single Door Magnetic Lock (Door status signal out putt)

The **TMT GLOBAL** Electromagnetic lock is using the leading production equipment and packaging technology of the international. Produced the electromagnetic lock is not only higher than similar products by more than 20% of the lock holding force, but also the antioxidant capacity of the surface of magnetic lock is reached the international advanced level. Which are widely used in airports, subways, banks, prisons, intelligent buildings.

- Heavy duty Structure
- Ultra Plus sensitive
- Low Consumption
- High Strength Aluminum Alloy Materials
- Pure Copper Magnetic Coil
- Silicon Steel Sheet Main Materials
- NO/NC Signal
- Red/ Green Indicator
- Delay Adjustment
- 12/24v Adjustable

Specification	
Lock Size	170Lx35Wx21H(mm)
Armature plate	130Lx33Wx9.3H(mm)
Holding Force	280kg(350Lbs)
Voltage	DC12V or DC24V (adjustable)
Current Draw	12V/500mA 24V/250mA
Signal Output	Dry Contact, Max Rating of Contact Current 3A
Suitable for	Wooden door , Glass door ,Metal door , Fireproof door
Surface Temp	≤+20°C
Operating Temp	-10~+55°C(14-131F)
Suitable Humidity	0~90%(non-condensing)
Finishes for Shell	Anodized aluminium surface texture processing
Finishes for Magnetic	Zinc
Finishes for Armature	Zinc
Weight	1.1kg

ORDER INFORMATION	
Model No	Description
TMT-7646	280KG SINGLE DOOR MAGNETIC DOOR LOCK

MAGNETIC DOUBLE DOOR LOCK SERIES





280KG Double Door Magnetic Lock (Door status signal out putt)

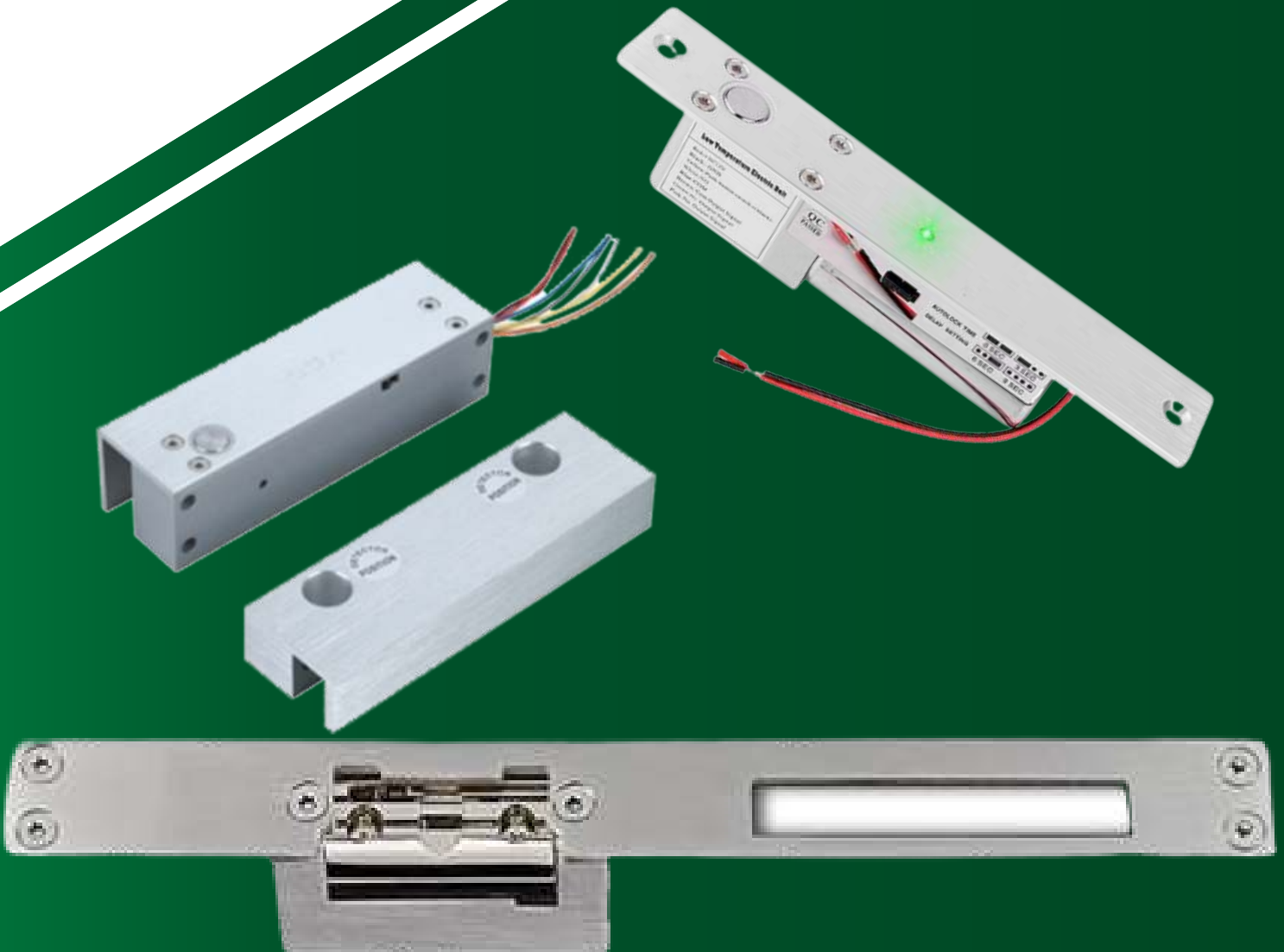
The TMT GLOBAL Electromagnetic lock is using the leading production equipment and packaging technology of the international. Produced the electromagnetic lock is not only higher than similar products by more than 20% of the lock holding force, but also the antioxidant capacity of the surface of magnetic lock is reached the international advanced level. Which are widely used in airports, subways, banks, prisons, intelligent buildings.

- Heavy duty Structure
- Ultra Plus sensitive
- Low Consumption
- High Strength Aluminum Alloy Materials
- Pure Copper Magnetic Coil
- Silicon Steel Sheet Main Materials
- NO/NC Signal
- Red/ Green Indicator
- Delay Adjustment
- 12/24v Adjustable

Specification	
Lock Size	500L*47W*26H(mm)
Armature plate	180L*38W*11H(mm)
Holding Force	280kg(600Lbs)*2
Voltage	DC12V or DC24V (adjustable)
Current Draw	12V/500mA 24V/250mA
Signal Output	Dry Contact, Max Rating of Contact Current 3A
Suitable for	Wooden door , Glass door ,Metal door , Fireproof door
Surface Temp	≤+20°C
Operating Temp	-10~+55°C(14-131F)
Suitable Humidity	0~90%(non-condensing)
Finishes for Shell	Anodized aluminium surface texture processing
Finishes for Magnetic	Zinc
Finishes for Armature	Zinc
Weight	4kg

ORDER INFORMATION	
Model No	Description
TMT-7649	280KG SINGLE DOOR MAGNETIC DOOR LOCK

DOOR LOCK SERIES



Specification	
Voltage:	DC12V
Start Current	900mA
Standby Current	150mA
Fail Safe	power to lock
Face Plate	205Lx35Wx41H(mm)
Strike plate	90Lx25Wx2W(mm)
Bolt	16mmDIA, stainless steel 16mm throw
Solid Bolt	polishing housing
Holding Force	800KG
Suitable For	Wooden Door, Glass Door, Metal Door, Glass Door
Surface Temp	Low Temperature
Induction Distance	8mm
Door lock delay time	0/ 3/ 6/ 9 seconds available to set
Signal Output	Door status Out put, NC/COM
Operating temp	-10~+25°C (14-131F)
Operating Humidity	0~90%(non-condensing)
Special Designed	Tested to 500000 cycles
Face place material	High Aluminum, Carrulous Line Finished
Weight	0.7kg
Standard Packing	30pcs

ORDER INFORMATION	
Model No	Description
TMT-7664	ELECTRIC BOLT LOCK

Specification	
Lock Size	250Lx25Wx31H(mm)
Strike Structure	Stainless Steel
Holding Force	800kg
Voltage	DC12V
Current	450mA(ES-110A) 200mA(ES-110B)
Surface Temperature	Within +20°C
Suitable Temperature	10~+25°C(14-131F)
Face plate Housing	Painted Steel
Function	Built-out MOV
Suitable For	Wooden Door, Metal Door, PVC Door
Opening Mode	90 Degree Swinging Door
Weight	0.4kg

ORDER INFORMATION	
Model No	Description
TMT-7667	ELECTRIC STRIKE LOCK

Specification	
Lock size	150Lx42Wx37H(mm)
Magnet plate size	150Lx42Wx20H(mm)
Lock pin	12mmDIA, stainless steel 15mm throw
Voltage	DC12V
Start Current	1.1A
Standby Current	0.15A
Solid lock pin	Polishing housing, 1000Kg Holding Force
Suitable For	Non- frame glass door
Signal Output	1...Door Status sensor, NO/COM,
Auto relock jumper	Adjustable (0, 3, 6, 9S)
Surface Temp	Low Temperature
Induction Distance	8mm
Operating temp	14-131F
Operating Humidity	0~90%(non-condensing)
Face place material	High Aluminum,
Lock Weight	0.7kg
Carton size	53Lx30Wx14H(cm)

ORDER INFORMATION	
Model No	Description
TMT-7665	ELECTRIC BOLT GLASS LOCK





ELECTRO MAGNETIC LOCK BRACKET SERIES

Product Parameter	Parameter Description
Dimension	L:170x40x29(mm) Z:130x38x38(mm) (180ZL) L:250x47x28(mm) Z:180x50x50(mm) (280ZL) L:285x54x31(mm) Z:189x57x50(mm) (350ZL) L:265x70x45(mm) Z:185x70x61(mm) (500ZL) L:280x80x51(mm) Z:190x70x61(mm) (750ZL)
Material	High Strength Aluminum, Sandblast Finished
Suitable	Narrow Door
Opening Mode	90 Degree Door
Finished for Shell	Anodized aluminum
Weight	0.4kg/0.75kg/0.82kg/1.3kg/1.6kg
Certification	CE /MA
Material	Special alloy aluminum, flashing silver sand blasting
Suitable For	Inner open wooden door, narrow box door, metal door

ORDER INFORMATION	
Model No	Description
TMT-7653	Z/L BRACKET FOR MAGNETIC LOCKS



Product Parameter	Parameter Description
Dimension	130x46x28mm(180U) 182x45x28mm (280U) 185x70x39mm(500U)
Material	High Strength Aluminum, Sandblast Finished
Voltage	12VDC/24V
Finished for Shell	Anodized aluminum
Opening Mode	90 Degree Door
Suitable For	Frameless Glass Door
Weight	0.24kg/0.32kg/0.5kg

ORDER INFORMATION	
Model No	Description
TMT-7655	U BRACKET FOR GLASS



Product Parameter	Parameter Description
Dimension	170x38mm(180L)
Material	High Strength Aluminum, Sandblast Finished
Voltage	12VDC/24V
Finished for Shell	Anodized aluminum
Opening Mode	90 Degree Door
Suitable For	Inner open wooden door, narrow box door, metal door
Weight	0.24kg/0.32kg/0.5kg

ORDER INFORMATION		
Model No		Description
TMT-7654	TMT-7654	L BRACKET FOR MAGNETIC LOCKS





ACCESS CONTROL RFID & UHF CARD STICKER SERIES

Specification	
Product name	RFID card 125khz
Frequency	125khz
Material	PVC
Size	86*54*0.8mm
Surface Finishing	Glossy, Matt or Frosted Anti Scratch
Standard	ISO/IEC 14443
Craft	Serial Number
Application	Access control, hotel key card, loyalty card, pre-paid card, staff ID card, etc.

ORDER INFORMATION	
Model No	Description
TMT-7676	EM CARD

Specification	
Product name	MF+UHF Dual Frequency Card
Frequency	868Mhz~915Mhz and 13.56Mhz
Material	PVC
Size	86*54*0.86mm
Surface Finishing	Glossy, Matt or Frosted Anti Scratch
Standard	ISO/IEC 14443
Craft	Serial Number
Application	Access control, hotel key card, loyalty card, pre-paid card, staff ID card, etc.

ORDER INFORMATION	
Model No	Description
TMT-7695	MF+UHF DUAL FREQUENCY CARD

Specification	
Product name	Mifare Card
Frequency	13.56mhz
Material	PVC
Size	86*54*0.86mm
Surface Finishing	Glossy, Matt or Frosted Anti Scratch
Standard	ISO/IEC 14443
Craft	Serial Number
Application	Access control, hotel key card, loyalty card, pre-paid card, staff ID card, etc.

ORDER INFORMATION	
Model No	Description
TMT-7678	Mifare CARD

Specification	
Product name	EM + UHF Dual Frequency Card
Frequency	125khz + 868Mhz~915Mhz
Material	PVC
Size	86*54*0.8mm
Surface Finishing	Glossy, Matt or Frosted Anti Scratch
Standard	ISO/IEC 14443
Craft	Serial Number
Application	Access control, hotel key card, loyalty card, pre-paid card, staff ID card, etc.

ORDER INFORMATION	
Model No	Description
TMT-7694	EM+UHF DUAL FREQUENCY CARD

Specification	
Product name	UHF CARD
Frequency	868Mhz~915Mhz
Material	PVC
Size	86*54*0.86mm
Surface Finishing	Glossy, Matt or Frosted Anti Scratch
Standard	ISO/IEC 14443
Craft	Serial Number
Application	Access control, hotel key card, loyalty card, pre-paid card, staff ID card, etc.

ORDER INFORMATION	
Model No	Description
TMT-7680	UHF CARD



Specification	
Product name	UHF Windshield Sticker
Frequency	860Mhz~868Mhz
Material	PVC
Size	86*54*0.86mm
Surface Finishing	Glossy, Matt or Frosted Anti Scratch
Standard	ISO/IEC 14443
Craft	Serial Number
Application	Access control, hotel key card, loyalty card, pre-paid card, staff ID card, etc.

ORDER INFORMATION	
Model No	Description
TMT-7682	UHF WINDSHIELD STICKER



Specification	
Product name	UHF Windshield Sticker
Frequency	860Mhz~868Mhz
Material	PVC
Size	86*54*0.8mm
Surface Finishing	Glossy, Matt or Frosted Anti Scratch
Standard	ISO/IEC 14443
Craft	Serial Number
Application	Access control, hotel key card, loyalty card, pre-paid card, staff ID card, etc.

ORDER INFORMATION	
Model No	Description
TMT-7683	UHF WINDSHIELD STICKER



Specification	
Product name	UHF Windshield Sticker
Frequency	860Mhz~868Mhz
Material	PVC
Size	86*54*0.86mm
Surface Finishing	Glossy, Matt or Frosted Anti Scratch
Standard	ISO/IEC 14443
Craft	Serial Number
Application	Access control, hotel key card, loyalty card, pre-paid card, staff ID card, etc.

ORDER INFORMATION	
Model No	Description
TMT-7686	UHF WINDSHIELD STICKER



Specification	
Product name	UHF Windshield Sticker
Frequency	860Mhz~868Mhz
Material	PVC
Size	86*54*0.86mm
Surface Finishing	Glossy, Matt or Frosted Anti Scratch
Standard	ISO/IEC 14443
Craft	Serial Number
Application	Access control, hotel key card, loyalty card, pre-paid card, staff ID card, etc.

ORDER INFORMATION	
Model No	Description
TMT-7686	UHF WINDSHIELD STICKER





ACCESS CONTROL NO TOUCH BUTTON SERIES

Specification	
Material	Aluminum Panel, Steel Button
Voltage	DC12V
Current	10mA
Mechanical Life	1000000 tested
Current Rating	3A,36VDC Max
Output	GND NO NC COM
Dimension	86 x 86x 33 mm
Weight	0.14kg

ORDER INFORMATION	
Model No	Description
TMT-7673	DOOR EXIT PUSH BUTTON



Specification	
Material	Aluminum Panel, Steel Button
Voltage	DC12V
Current	10mA
Mechanical Life	1000000 tested
Current Rating	3A,36VDC Max
Output	GND NO NC COM
Dimension	91 x 28x 20mm
Weight	0.14kg

ORDER INFORMATION	
Model No	Description
TMT-7674	DOOR EXIT PUSH BUTTON



Specification	
Material	Aluminum Panel, Steel Button
Voltage	DC12V
Current	10mA
Mechanical Life	1000000 tested
Current Rating	3A,36VDC Max
Output	GND NO NC COM
Dimension	86 x86x38mm
Weight	0.15kg

ORDER INFORMATION	
Model No	Description
TMT-7670	DOOR EXIT PUSH BUTTON



Specification	
Material	Aluminum Panel, Steel Button
Voltage	DC12V
Current	10mA
Mechanical Life	1000000 tested
Current Rating	3A,36VDC Max
Output	GND NO NC COM
Dimension	115 x70x25mm
Weight	0.15kg

ORDER INFORMATION	
Model No	Description
TMT-7671	DOOR EXIT PUSH BUTTON



ACCESS CONTROL EMERGENCY EXIT BREAK GLASS SERIES





Specification	
Dimensions	86Lx86Wx50H(mm)
Standard Structure	Fireproof Material, Easy to install
Current Rating	3A 36VDC Max
Output Contact	NO\NC\COM
Suitable for Door	Exit Door, Emergence Door
Operating temp	-10°C ~ 55°C (14°F-131°F)
Operating Humidity	0-95% (non- condensing)
Material Selection	Fireproof Material, Sandblast Finished
Weight	0.136kg

ORDER INFORMATION	
Model No	Description
TMT-7659	DOOR EXIT PUSH BUTTON